

Distribution system

Distribution systems create the connection between the field peripherals and the PLC. Via screw in M12/M8 connectors, actuators and sensors can be connected to the distribution box in the field. The distribution boxes are IP67 rated and can be used in difficult environments. Via a parallel cable (multi-core cable) the connection is made to the interface card in the PLC / Controller.

Distribution boxes allow rapid and safe cableing in all applications and with the integrated LED indicators, easier service.

Murrelektronik offers a complete range of 4-, 6- and 8-way distribution boxes with M12 and M8 connection sockets. Unused sockets can be covered with a cap.

The use of T-couplers and Y-connectors allow 2 signals to be processed through one socket.

The pre-wired PUR cables greatly reduce time consuming wiring and space. The version with connection terminals is ideal for applications where the cable route to the controller is difficult.

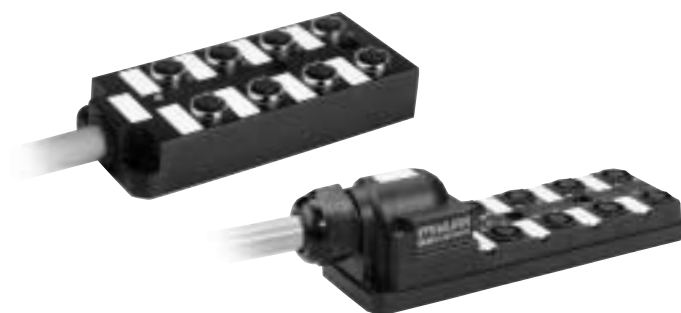
The version with 12- or 19-pole connectors allows rapid assembly and transport separation when necessary.

Status indicator and labels are provided for each I/O.

The new M8 distribution boxes set new standards in size and weight (100 g without cable), allowing distribution to be used in places where previously it was impossible. The M8 sockets are available in both screw and snap in options. The M8 distribution boxes are available with pre-wired cable or with 12- or 19-pole connectors in 8 different versions and 3- or 4-pole sockets.

In addition we can now offer the single row M8 distribution box 3-pole with pre-wired cable in 4-, 6-, 8- and 10-way version.

M12 distribution box with pre-wired and plug-in cable



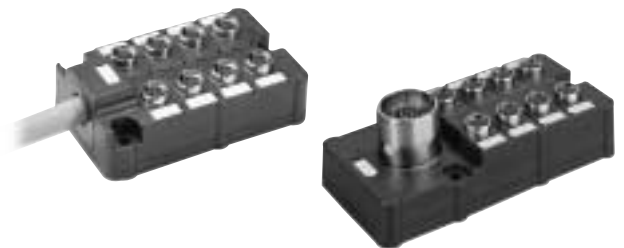
M12 distribution box with terminals for field-wiring



M12 distribution box with 12/19-pole connector



M8 distribution box with pre-wired cable and 12/19-pole connector



M8 distribution box with pre-wired cable 4-, 6-, 8-, 10-way



Murrelektronik offers a wide range of distribution boxes and accessories, which greatly reduce wiring, installation and service costs.

Sensors and actuators are connected via M12 and M8 sockets to the distribution

box. The connection to the control panel can be achieved in a number of different ways.

Robust housing, built to a high protection (IP67) along with pre-tested circuitry guarantee reliability in any number of applications.



M12 distribution box with pre-wired cable 4, 6 or 8 female sockets
4-pole for 1 signal or 5-pole for 2 signals (T couplers or Y connectors can be used)
PUR multi-core cable 0.34/0.75mm² or 1mm²
8-way version is also available with rear exit control wiring (indiv. wires)
4- and 8-way also in shielded version (page 1.8.6)

Page 1.8.4



M12 distribution box with terminal connection 4, 6 or 8 female sockets
4-pole for 1 signal
Field-wireable via screw terminals

Page 1.8.5



M12 distribution box with plug connector M23, 4, 6 or 8 female sockets
4-pole for 1 signal or 5-pole for 2 signals (T couplers or Y connectors can be used)
12-pole plug connector M23 for distribution box using 4 contacts per socket
19-pole plug connector M23 for distribution box using 5 contacts per socket
4- and 8-way also in shielded version (page 1.8.7)

Page 1.8.5



M12 distribution box with pre-wired cable and connection cap, 4, 6 or 8 female sockets
4-pole for 1 signal or 5-pole for 2 signals (T couplers or Y connectors can be used)
PUR multi-core cable 0.34/0.75mm² or 1mm²
Potential separation possible for 2 circuits

Page 1.8.8



M12 distribution box with terminal connection 4, 6 or 8 female sockets
4-pole for 1 signal or 5-pole for 2 signals (T couplers or Y connectors can be used)
Field-wireable via screw terminals
Potential separation possible for 2 circuits

Page 1.8.10



M12 distribution box with plug connector M23, 4, 6 or 8 female sockets
4-pole for 1 signal or 5-pole for 2 signals (T couplers or Y connectors can be used)
12-pole plug connector M23 for distribution box using 4 contacts per socket
19-pole plug connector M23 for distribution box using 5 contacts per socket

Page 1.8.11



M12 distribution box with plug connector M23, 4, 6 or 8 female sockets
 4-pole for 1 signal or 5-pole for 2 signals (T couplers or Y connectors can be used)
 12-pole plug connector M23 for distribution box using 4 contacts per socket
 19-pole plug connector M23 for distribution box using 5 contacts per socket
 Potential separation possible for 2 circuits

Page 1.8.12



M8 distribution box with pre-wired cable, 8 female sockets
 Screw in version, 3-pole for 1 signal, 4-pole for 2 signals
 PUR multi-core cable 0.34/0.75mm²
 Screw in version is also available with rear exit control wiring (indiv. wires)

Page 1.8.13



M8 distribution box with plug connector M23, 8 female sockets
 Screw in, 3-pole for 1 signal, 4-pole for 2 signals
 12-pole plug connector M23 for distribution box using 3 contacts per socket
 19-pole plug connector M23 for distribution box using 4 contacts per socket

Page 1.8.14



M8 distribution box with pre-wired cable, 8 female sockets
 Snap-in, 3-pole for 1 signal, 4-pole for 2 signals
 PUR multi-core cable 0.34/0.75mm²

Page 1.8.13



M8 distribution box with plug connector M23, 8 female sockets
 Snap-in, 3-pole for 1 signal, 4-pole for 2 signals
 12-pole plug connector M23 for distribution box using 3 contacts per socket
 19-pole plug connector M23 for distribution box using 4 contacts per socket

Page 1.8.14



M8 distribution box with pre-wired cable, 4, 6, 8 or 10 female sockets
 Screw in, 3-pole for 1 signal
 PUR multi-core cable 0.34/0.75mm²

Page 1.8.15



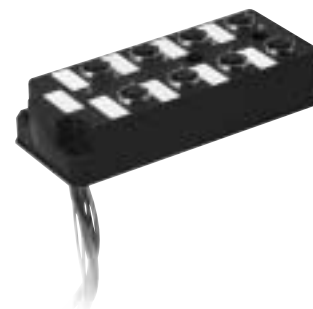
Connection cable for distribution box with M23 connector, 12-pole and 19-pole socket,
 also in molded version.
 Field-wireable via solder connection
 Alternatively pre-wired with 0.34/0.75mm² or 1mm² PUR cable

From page 1.8.16

Distribution box M12 with pre-wired cable

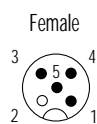
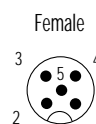
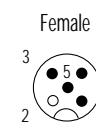
Distribution box 4-way, 6-way, 8-way with pre-wired cable

Distribution box 8-way with back plate cable connection (single wires) (for direct mounting on control panels)



Flat gasket supplied

Contact layout

General:	4-pole	5-pole	4-pole
Contact 1: (+)			
Contact 2: (N/C)/(S2)			
Contact 3: (-)			
Contact 4: (N/O)/(S1)			
Contact 5: (PE)			

Distribution box 4-way

Connection cable	Cable length	Art.-No.	Art.-No.
PUR 0,34/0,75 mm ²	3,0 m	27857	27832
for sensors and actuators	5,0 m	27858	27833
suit. for drag chains	10,0 m	27859	27834
Ident. 4-pole HH, 5-pole HL	15,0 m	27860	27835
PUR 1,00 mm ²	3,0 m	27802	
for actuators	5,0 m	27803	
Ident. HC	10,0 m	27804	
	15,0 m	27805	

Distribution box 6-way

Connection cable	Cable length	Art.-No.	Art.-No.
PUR 0,34/0,75 mm ²	3,0 m	27861	27842
for sensors and actuators	5,0 m	27862	27843
suit. for drag chains	10,0 m	27863	27844
Ident. 4-pole HJ, 5-pole HM	15,0 m	27864	27845
PUR 1,00 mm ²	3,0 m	27812	
for actuators	5,0 m	27813	
Ident. HD	10,0 m	27814	
	15,0 m	27815	

Distribution box 8-way

Connection cable	Cable length	Art.-No.	Art.-No.	Art.-No.
PUR 0,34/0,75 mm ²	1,0 m			¹⁾ 276344
for sensors and actuators	3,0 m	27865	27852	¹⁾ 27792
suit. for drag chains	5,0 m	27866	27853	
Ident. 4-pole HK, 5-pole HN	10,0 m	27867	27854	
	15,0 m	27868	27855	
PUR 1,00 mm ²	3,0 m	27822		
for actuators	5,0 m	27823		
Ident. HE	10,0 m	27824		
	15,0 m	27825		

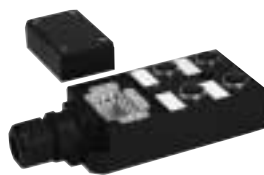
Note

¹⁾ wire layout as Art.-No. 27865 (Ident. HK)

Other versions on request. Please find accessories on page 1.8.5. Technical data can be found on page 1.9.1

Distribution box M12
with terminals for field wiring
with 12 or 19-pole
plug connector M23

Distribution box M12
Terminal connection



Distribution box M12
Plug connector M23 12-pole



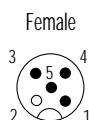
Distribution box M12
Plug connector M23 19-pole

Contact layout

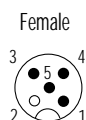
General:

- Contact 1: (+)
- Contact 2: (N/C)/(S2)
- Contact 3: (-)
- Contact 4: (N/O)/(S1)
- Contact 5: (PE)

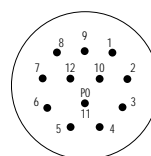
4-pole



4-pole



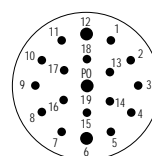
Plug connector M23



5-pole



Plug connector M23



Ordering data

	Art.-No.	Art.-No.	Art.-No.
4-way	27770	27760	27779
6-way	27771	27761	27780
8-way	27772	27762	27781

Accessories

		Art.-No.
Blind plug for empty sockets	MSX 12	58627
Snap foot for DIN-rail	MVX	27905
Female connector 12/19-pole	see page 1.8.16	

Note

Other versions on request.
Technical data can be found on page 1.9.1

Distribution box M12

Shielded

with pre-wired and shielded cable

Distribution box 4-way, 8-way

with pre-wired cable with LED



Distribution box 4-way, 8-way

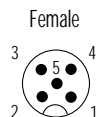
with pre-wired cable without LED

Contact layout

General:

Contact 1: (+)
 Contact 2: (N/C)/(S2)
 Contact 3: (-)
 Contact 4: (N/O)/(S1)
 Contact 5: (PE)

5-pole



Distribution box 4-way		Art.-No.	Art.-No.
Connection cable, shielded	Cable length		
PUR 0,34/0,75 mm ²	3,0 m	27270	27274
for sensors and actuators	5,0 m	27271	27275
suit. for drag chains	10,0 m	27272	27276
Ident. 5-pole OA	15,0 m	27273	27277
Distribution box 8-way		Art.-No.	Art.-No.
Connection cable, shielded	Cable length		
PUR 0,34/0,75 mm ²	3,0 m	27280	27284
for sensors and actuators	5,0 m	27281	27285
suit. for drag chains	10,0 m	27282	27286
Ident. 5-pole OB	15,0 m	27283	27287
Accessories		Art.-No.	
Blind plug for empty sockets	MSX 12		58627
Snap foot for DIN-rail	MVX		27905

Note

Other versions on request. Technical data can be found on page 1.9.1

Distribution box M12

Shielded

with 19-pole
Plug connector M23

Distribution box 4-way, 8-way

Plug connector M23 19-pole
with LED



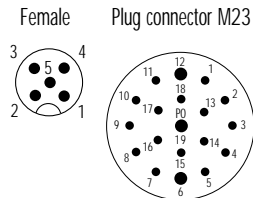
Distribution box 4-way, 8-way

Plug connector M23 19-pole
without LED

Contact layout

General: 5-pole

- Contact 1: (+)
- Contact 2: (N/C)/(S2)
- Contact 3: (-)
- Contact 4: (N/O)/(S1)
- Contact 5: (PE)



Ordering data

	Art.-No.	Art.-No.
4-way	27278	27279
8-way	27288	27289
Accessories	Art.-No.	
Blind plug for empty sockets	MSX 12	58627
Snap foot for DIN-rail	MVX	27905
Female connector 19-pole	see page 1.8.16	

Note

Other versions on request.
Technical data can be found on page 1.9.1

Distribution box M12 with pre-wired cable and pluggable connection

MVP12 4-way, 6-way, 8-way with pre-wired and pluggable connection cap

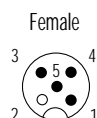


Contact layout

General:

4-pole

- Contact 1: (+)
- Contact 2: (N/C)/(S2)
- Contact 3: (-)
- Contact 4: (N/O)/(S1)
- Contact 5: (PE)



Distribution box 4-way

Art.-No.

Connection cable	Cable length	Art.-No.
PUR 0,34/0,75 mm ²	3,0 m	27011
for sensors and actuators	5,0 m	27012
suit. for drag chains	10,0 m	27013
Ident. 4-pole HH	15,0 m	27014
PUR 1,00 mm ²	3,0 m	27041
for actuators	5,0 m	27042
Ident. HC	10,0 m	27043
	15,0 m	27044

Distribution box 6-way

Art.-No.

Connection cable	Cable length	Art.-No.
PUR 0,34/0,75 mm ²	3,0 m	27015
for sensors and actuators	5,0 m	27016
suit. for drag chains	10,0 m	27017
Ident. 4-pole HJ	15,0 m	27018
PUR 1,00 mm ²	3,0 m	27045
for actuators	5,0 m	27046
Ident. HD	10,0 m	27047
	15,0 m	27048

Distribution box 8-way

Art.-No.

Connection cable	Cable length	Art.-No.
PUR 0,34/0,75 mm ²	3,0 m	27021
for sensors and actuators	5,0 m	27022
suit. for drag chains	10,0 m	27023
Ident. 4-pole HK	15,0 m	27024
PUR 1,00 mm ²	3,0 m	27051
for actuators	5,0 m	27052
Ident. HE	10,0 m	27053
	15,0 m	27054

Note

Other versions on request. Please find accessories on page 1.8.9. Technical data can be found on page 1.9.1

Distribution box M12 with pre-wired cable and pluggable connection

for sensors and actuators
suit. for drag chains

Potential separation
via pluggable jumper

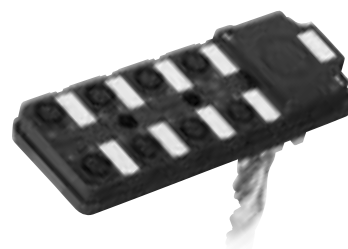
MVP12 4-way, 6-way, 8-way

with pre-wired and pluggable connection cap



MVP12 8-way

with back plate cable connection (single wires)
(for direct mounting on control panels)



Flat gasket supplied

Contact layout

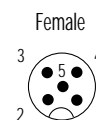
General:

- Contact 1: (+)
- Contact 2: (N/C)/(S2)
- Contact 3: (-)
- Contact 4: (N/O)/(S1)
- Contact 5: (PE)

5-pole



5-pole



without potential separation

with potential separation

without potential separation

with potential separation

		Art.-No.	Art.-No.	Art.-No.	Art.-No.
Distribution box 4-way					
Connection cable	Cable length				
PUR 0,34/0,75 mm ²	3,0 m	27025	27071		
Ident.	5,0 m	27026	27072		
without potential separation HL	10,0 m	27027	27073		
with potential separation HT	15,0 m	27028	27074		
Distribution box 6-way		Art.-No.	Art.-No.		
Connection cable	Cable length				
PUR 0,34/0,75 mm ²	3,0 m	27031	27075		
Ident.	5,0 m	27032	27076		
without potential separation HM	10,0 m	27033	27077		
with potential separation HB	15,0 m	27034	27078		
Distribution box 8-way		Art.-No.	Art.-No.	Art.-No.	Art.-No.
Connection cable	Cable length				
PUR 0,34/0,75 mm ²	3,0 m	27035	27081	27146	27151
Ident.	5,0 m	27036	27082	27148	27153
without potential separation HN	10,0 m	27037	27083		
with potential separation HA	15,0 m	27038	27084		
Accessories					Art.-No.
Blind plug for empty sockets	MSX 12				58627
Snap foot for DIN-rail	MVX				27905

Note

Other versions on request. Technical data can be found on page 1.9.1

Distribution box M12

Potential separation via pluggable jumper

MVP12 4-way, 6-way, 8-way
basic housing with potential separation



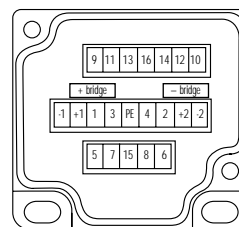
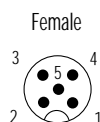
Connection cap
with and without pre-wired cable



Contact layout

- General:
- Contact 1: (+)
 - Contact 2: (N/C)/(S2)
 - Contact 3: (-)
 - Contact 4: (N/O)/(S1)
 - Contact 5: (PE)

5-pole



Ordering data	Art.-No.	Art.-No.	Art.-No.	Art.-No.	Art.-No.	Art.-No.
	4-way	6-way	8-way	4-way	6-way	8-way
Basic housing	27114	27115	27116			
Ordering data				Art.-No.	Art.-No.	Art.-No.
Connection cap with plug in terminals				4127775	4127775	4127775
Connection cap w. pre-wired cable for 4-way distribution box				Art.-No.	Art.-No.	Art.-No.
without potential separation	5,0 m			4027026		
PUR 0,34/3 x 0,75 mm ²	10,0 m			4027027		
Ident. HL	15,0 m			4027028		
with potential separation	5,0 m			4027072		
PUR 0,34/5 x 0,75 mm ²	10,0 m			4027073		
Ident. HT	15,0 m			4027074		
Connection cap w. pre-wired cable for 6-way distribution box				Art.-No.	Art.-No.	Art.-No.
without potential separation	5,0 m				4027032	
PUR 0,34/3 x 0,75 mm ²	10,0 m				4027033	
Ident. HM	15,0 m				4027034	
with potential separation	5,0 m				4027076	
PUR 0,34/5 x 0,75 mm ²	10,0 m				4027077	
Ident. HB	15,0 m				4027078	
Connection cap w. pre-wired cable for 8-way distribution box				Art.-No.	Art.-No.	Art.-No.
without potential separation	5,0 m					4027036
PUR 0,34/3 x 0,75 mm ²	10,0 m					4027037
Ident. HN	15,0 m					4027038
with potential separation	5,0 m					4027082
PUR 0,34/5 x 0,75 mm ²	10,0 m					4027083
Ident. HA	15,0 m					4027084
Accessories						Art.-No.
Blind plug for empty sockets	MSX 12					58627
Snap foot for DIN-rail	MVX					27905

Note

Other versions on request. Technical data can be found on page 1.9.1

Distribution box M12
with terminals for field wiring
for sensors and actuators

Potential separation
via pluggable jumper

MVP12 4-way, 6-way, 8-way
 with terminal connection and potential separation



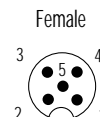
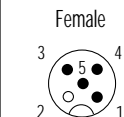
Contact layout

General:

4-pole

5-pole

- Contact 1: (+)
- Contact 2: (N/C)/(S2)
- Contact 3: (-)
- Contact 4: (N/O)/(S1)
- Contact 5: (PE)



Ordering data

	Art.-No.	Art.-No.
Distribution box 4-way	27776	27773
Distribution box 6-way	27777	27774
Distribution box 8-way	27778	27775

Accessories

		Art.-No.
Blind plug for empty sockets	MSX 12	58627
Snap foot for DIN-rail	MXV	27905

Note

Other versions on request. Technical data can be found on page 1.9.1

Distribution box M12

with 12/19-pole
Plug connector M23

MVP12

with plug connector M23



MVP12

with front faced plug connector M23

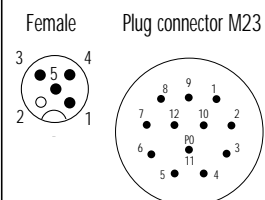


Contact layout

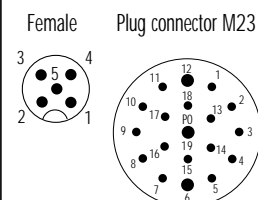
General:

- Contact 1: (+)
- Contact 2: (N/C)/(S2)
- Contact 3: (-)
- Contact 4: (N/O)/(S1)
- Contact 5: (PE)

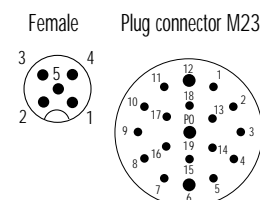
4-pole



5-pole



5-pole



Ordering data

	Art.-No.	Art.-No.	Art.-No.
4-way	27763	27782	
6-way	27764	27783	
8-way	27765	27784	27785

Accessories

		Art.-No.
Blind plug for empty sockets	MSX 12	58627
Snap foot for DIN-rail	MVX	27905
Female connector 12-/19-pole	see page 1.8.16	

Note

Other versions on request.
Technical data can be found on page 1.9.1

Distribution box M8 with pre-wired cable

Distribution box 8-way

Screw in



Distribution box 8-way

Snap in



Contact layout

General:	3-pole with screw in sockets	4-pole with screw in sockets	3-pole with snap in sockets
Contact 1: (+)			
Contact 2: (N/C)/(S2)			
Contact 3: (-)			
Contact 4: (N/O)/(S1)			
	Female 	Female 	Female

Distribution box 8-way

Connection cable	Cable length	Art.-No.	Art.-No.	Art.-No.
PUR 0,34/0,75 mm ²	3,0 m	3827865	3827852	3927865
for sensors	5,0 m	3827866	3827853	3927866
suit. for drag chains	10,0 m	3827867	3827854	3927867
Ident. 3-pole NC, 4-pole NF	15,0 m	3827868	3827855	3927868
Rear exit indiv. wires	3,0 m	¹⁾ 3827792	²⁾ 3827793	

Accessories

	Art.-No.
Blind plug for empty sockets, screw in	3858627
Snap foot for DIN-rail, snap in	3958627
Female connector 19-pole	see page 1.8.16

Note

¹⁾ wire layout as Art.-No. 3827865. ²⁾ wire layout as Art.-No. 3827852. Other versions on request.
 Technical data can be found on page 1.9.1

Distribution box M8

with 12/19-pole
Plug connector M23

Distribution box 8-way

Plug connector M23 12-, 19-pole
Screw in



Distribution box 8-way

Plug connector M23 12-, 19-pole
Snap in



Contact layout

General:	3-pole	4-pole	3-pole	4-pole
Contact 1: (+) Contact 2: (N/C)/(S2) Contact 3: (-) Contact 4: (N/O)/(S1)	Female Plug connector M23 	Female Plug connector M23 	Female Plug connector M23 	Female Plug connector M23

Ordering data

8-way, M8 with screw in sockets	Art.-No. 3827762	Art.-No. 3827781	Art.-No. 3927762	Art.-No. 3927781
8-way, M8 with snap in sockets			3927762	3927781

Accessories

Blind plug for empty sockets, screw in				Art.-No. 3858627
Snap foot for DIN-rail, snap in				3958627
Female connector 12/19-pole	see page 1.8.16			

Note

Distribution box M8 with pre-wired cable

MVPS8
4-way



MVPS8
6-way



MVPS8
8-way



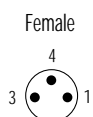
MVPS8
10-way



Contact layout

General:

- Contact 1: (+)
- Contact 2: (N/C)/(S2)
- Contact 3: (-)
- Contact 4: (N/O)/(S1)



Ordering data		Art.-No.	Art.-No.	Art.-No.	Art.-No.
Connection cable	Cable length	4-way	6-way	8-way	10-way
PUR 0,34/0,75 mm ²	5,0 m	3827202	3827212	3827222	3827232
for sensors	10,0 m	3827203	3827213	3827223	3827233
suit. for drag chains					
Ident. 3-pole 4-way	NA				
	6-way	NB			
	8-way	NC			
	10-way	OK			
Accessories					Art.-No.
Blind plug for empty sockets, screw in					3858627

Note

**Female connector 12-pole
for distribution box**
M12 4-pole
M8 3-pole

**Female connector 19-pole
for distribution box**
M12 5-pole
M8 4-pole

– straight/90°

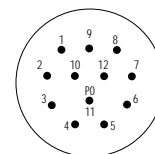
– pre-wired cable
with open cable end

– connector for field wiring
with solder points

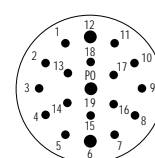
for unshielded Distribution box
with plug connector M23



Contact layout 12-pole



Contact layout 19-pole



for 4-way unshielded distribution box
(Cable 7- or 11-wire)

for 6-way unshielded distribution box
(Cable 9- or 15-wire)

for 8-way unshielded distribution box
(Cable 11- or 19-wire)

Fem. connector straight 12-pole		Art.-No.	Art.-No.	Art.-No.
Connection cable	Cable length			
PUR 0,34 mm ² for sensors	5,0 m	27540	27546	27552
Ident. for distribution box	10,0 m	27541	27547	27553
4-way HH, 6-way HJ, 8-way HK	15,0 m	27542	27548	27554
PUR 1,0 mm ² for actuators	5,0 m	27906	27912	27918
Ident. for distribution box	10,0 m	27907	27913	27919
4-way HC, 6-way HD, 8-way HE	15,0 m	27908	27914	27920
without cable with sol. points		27904	27904	27904
Female connector 90° 12-pole		Art.-No.	Art.-No.	Art.-No.
Connection cable	Cable length			
PUR 0,34 mm ² for sensors	5,0 m	27543	27549	27555
Ident. for distribution box	10,0 m	27544	27550	27556
4-way HH, 6-way HJ, 8-way HK	15,0 m	27545	27551	27557
PUR 1,0 mm ² for actuators	5,0 m	27909	27915	27921
Ident. for distribution box	10,0 m	27910	27916	27922
4-way HC, 6-way HD, 8-way HE	15,0 m	27911	27917	27923
without cable with sol. points		33997	33997	33997
Fem. connector straight 19-pole		Art.-No.	Art.-No.	Art.-No.
Connection cable	Cable length			
PUR 0,34 mm ² for sensors	5,0 m	27594	27310	27316
Ident. for distribution box	10,0 m	27595	27311	27317
4-way HL, 6-way HM, 8-way HN	15,0 m	27596	27312	27318
without cable with sol. points		33998	33998	33998
Female connector 90° 19-pole		Art.-No.	Art.-No.	Art.-No.
Connection cable	Cable length			
PUR 0,34 mm ² for sensors	5,0 m	27597	27313	27319
Ident. for distribution box	10,0 m	27598	27314	27320
4-way HL, 6-way HM, 8-way HN	15,0 m	27599	27315	27321
without cable with sol. points		27849	27849	27849

Note

Other versions on request.

Female connector 12-pole
straight, for distribution box
M12 4-pole

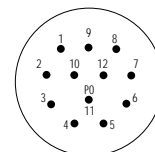
Female connector 19-pole
straight, for distribution box
M12 5-pole

– pre-wired cable
with open cable end

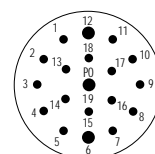
for shielded Distribution box
with plug connector M23



Contact layout 12-pole



Contact layout 19-pole



for 4-way shielded distribution box
(Cable 11-wire)

for 8-way shielded distribution box
(Cable 19-wire)

Fem. connector straight		12-pole	Art.-No.	19-pole	Art.-No.
Connection cable	Cable length				
PUR 0,34 mm ² for sensors	5,0 m		4227594		4227316
Ident. for distribution box	10,0 m		4227595		4227317
4-way HL, 8-way HN	15,0 m		4227596		4227318

Note

Other versions on request.

**Female connector 12-pole
straight, for distribution box**
M12 4-pole
M8 3-pole

**Female connector 19-pole
straight, for distribution box**
M12 5-pole
M8 4-pole

– straight/90°

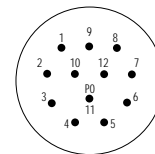
– pre-wired cable
with open cable end

for unshielded Distribution box

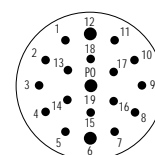
with pre-wired cable
and connector M23



Contact layout 12-pole



Contact layout 19-pole



for 8-way unshielded distribution box
(Cable 11- or 19-wire)

Fem. connector straight 12-pole		Art.-No.
Connection cable	Cable length	
PUR 0,34 mm ² for sensors	5,0 m	4827552
Ident. for distribution box	10,0 m	4827553
8-way HK	15,0 m	4827554
Female connector 90° 12-pole		Art.-No.
Connection cable	Cable length	
PUR 0,34 mm ² for sensors	5,0 m	4827555
Ident. for distribution box	10,0 m	4827556
8-way HK	15,0 m	4827557
Fem. connector straight 19-pole		Art.-No.
Connection cable	Cable length	
PUR 0,34 mm ² for sensors	5,0 m	4827316
Ident. for distribution box	10,0 m	4827317
8-way HN	15,0 m	4827318
Female connector 90° 19-pole		Art.-No.
Connection cable	Cable length	
PUR 0,34 mm ² for sensors	5,0 m	4827319
Ident. for distribution box	10,0 m	4827320
8-way HN	15,0 m	4827321

Note

Other versions on request.