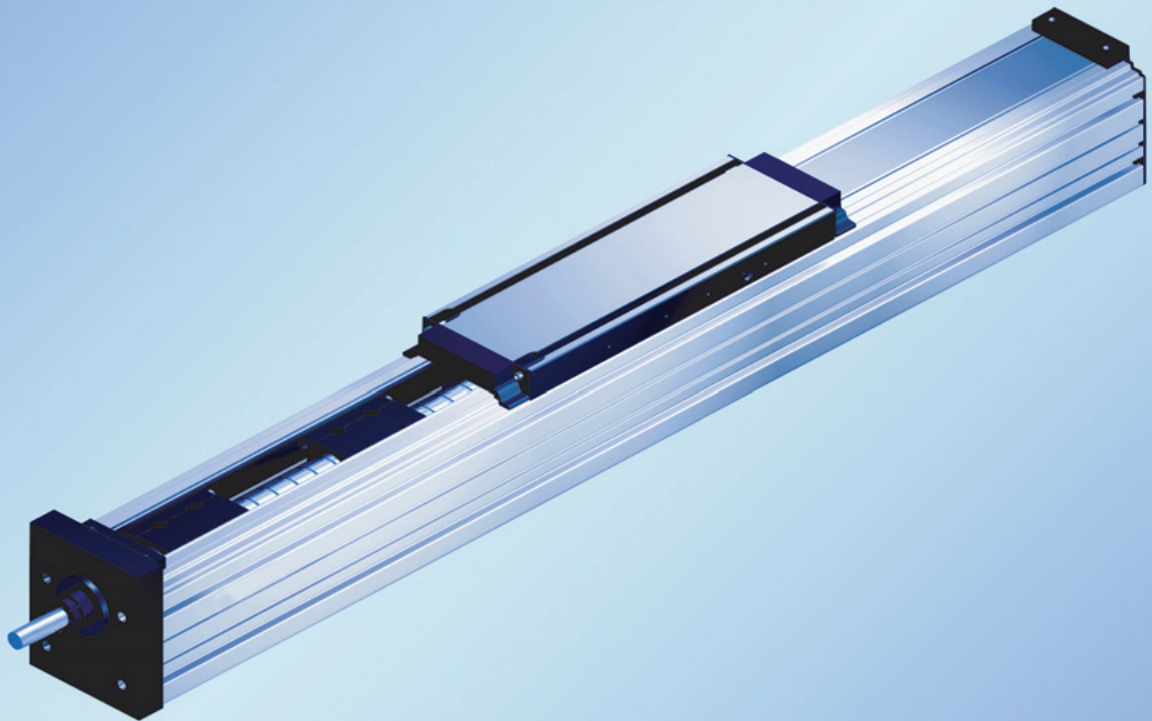
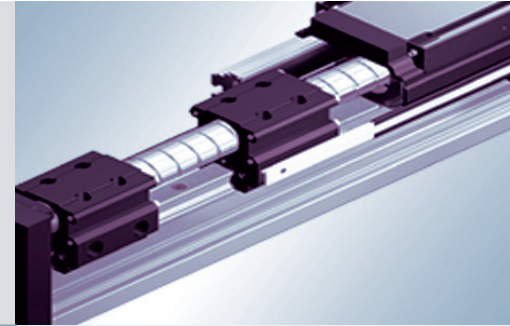


# Screw Support for Linear Module MKK 25-110

The Drive & Control Company

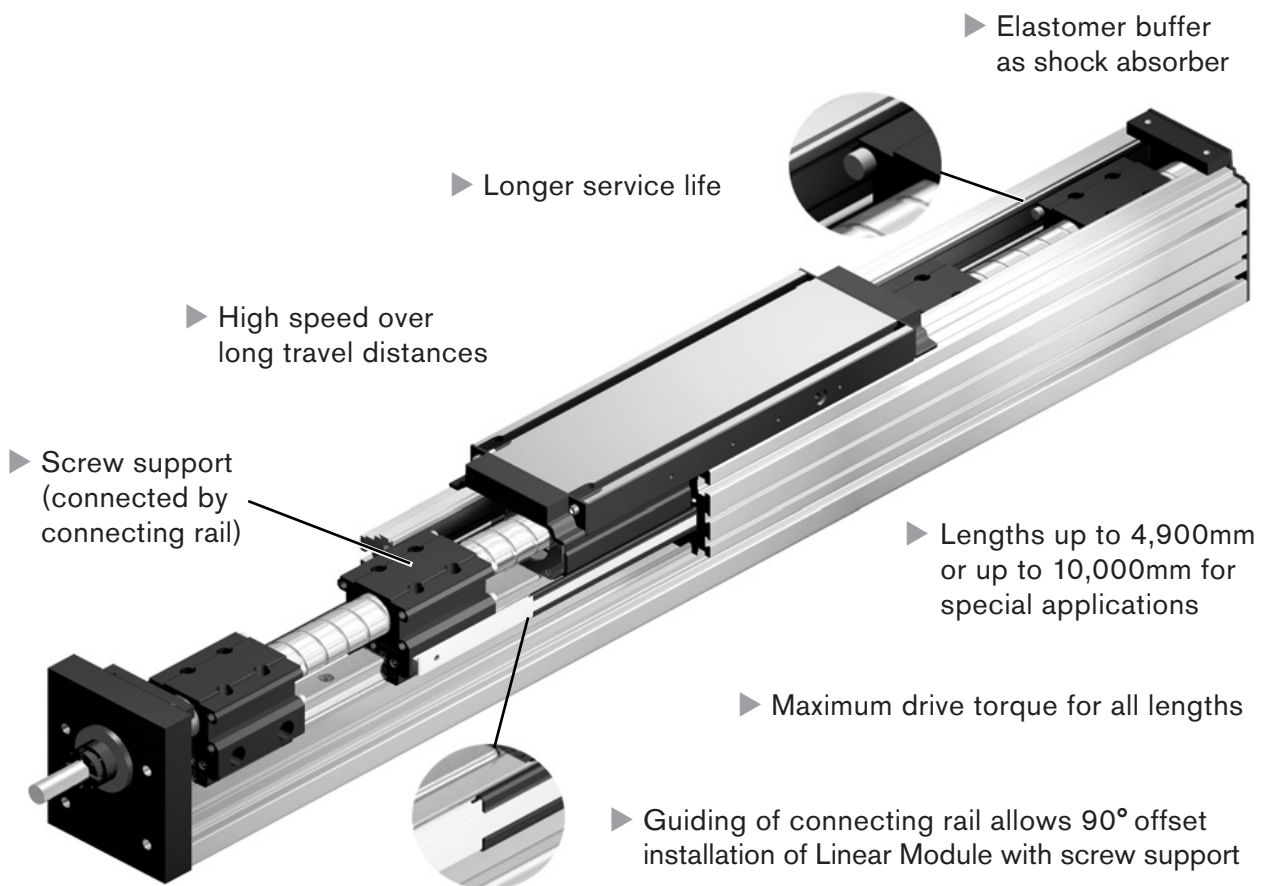


# Screw Support for MKK Linear Modules

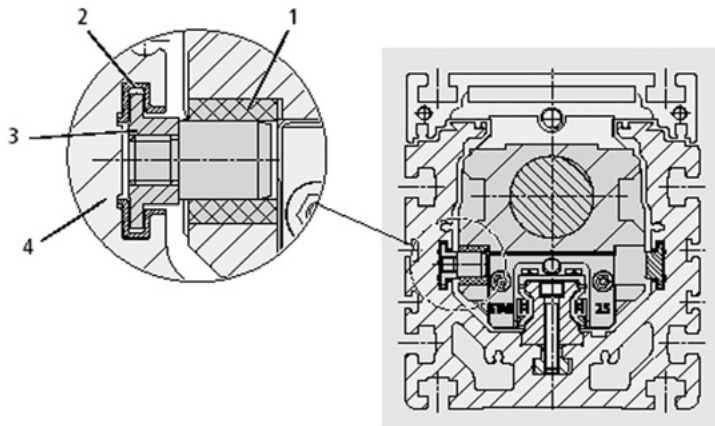
## Product Overview

### The SPU Screw Support offers the following :

- Low weight thanks to aluminum runner block and aluminum connecting rail
- Connecting rail guided within the frame. Integrated plastic profiles ensure optimal sliding of the connecting rail in the frame
- Elastomer buffer as shock absorber between carriage and screw support. Additional damping provided by elastomer ring between connecting rail and screw support
- Up to 2 screw supports can be integrated per module
- Runner block of screw support lubricated for life (no in-service lubrication required)
- Screw support protected by sealing strip of Linear Module
- Screw support selectable as a standard option by specification of option number



Carriage	Version	Option Number	Weight (kg)	Length <sub>max</sub> (mm)	Length calculation
	without SPU	01	$0.0217 \times L + 7.2$	3000	$L = \text{stroke} + 2 \times \text{excess travel} + 450$
	1 SPU	03	$0.0217 \times L + 8.5$	4900	$L = \text{stroke} + 2 \times \text{excess travel} + 626$
2 SPU	04	$0.0217 \times L + 9.8$	4900	$L = \text{stroke} + 2 \times \text{excess travel} + 802$	



- 1 Elastomer ring
- 2 Plastic profiles
- 3 Aluminum connecting rail
- 4 Frame

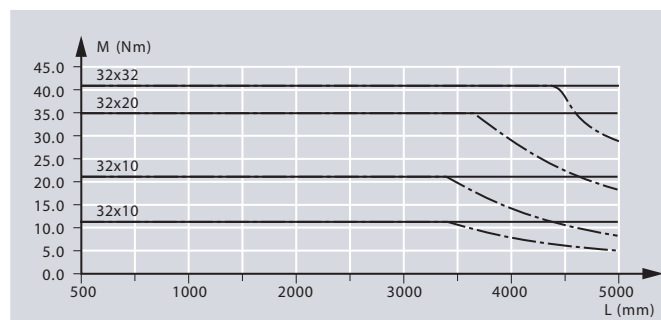
Motor Attachment	for motor	Option number
	M.. 71..	01
M.. 90..	02	

Motor	Type	Option number
	MKD 71B-N-061 KG1	11
	MHD 71B-061-NG1-UN	62
	MKD 90B-047 KG1	13
MHD 90B-047-NG1-UN	63	

Ball screw $d_0 \times P$	without SPU	Frictional drag $M_R$ (Nm) with 1 SPU	with 2 SPUs
32 x 5	0.8	0.9	0.9
32 x 10	0.9	1.1	1.2
32 x 20	0.9	1.2	1.4
32 x 32	1.0	1.5	1.9

### Permissible drive torque $M_{per}$

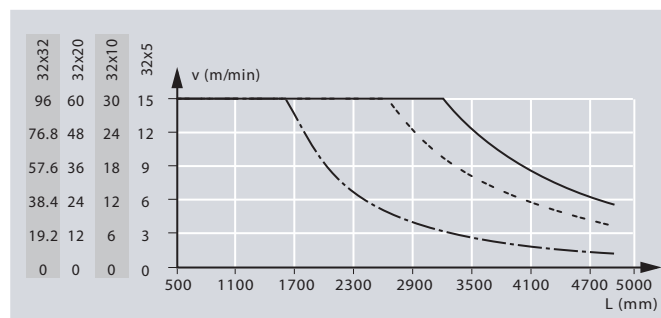
— with SPU  
- - - without SPU



### Permissible speed $v$

Observe motor speed!

— with 2 SPUs  
- - - with 1 SPU  
- · - without SPU



Bosch Rexroth Corporation  
Linear Motion and  
Assembly Technologies  
14001 South Lakes Drive  
Charlotte, NC 28273  
Telephone (800) 438-5983  
Facsimile (704) 583-0523  
[www.boschrexroth-us.com](http://www.boschrexroth-us.com)

Bosch Rexroth Corporation  
Corporate Headquarters  
5150 Prairie Stone Parkway  
Hoffman Estates, IL 60192-3707  
Telephone (847) 645-3600  
Facsimile (847) 645-6201

Bosch Rexroth Corporation  
Industrial Hydraulics  
2315 City Line Road  
Bethlehem, PA 18017-2131  
Telephone (610) 694-8300  
Facsimile (610) 694-8467

Bosch Rexroth Corporation  
Electric Drives and Controls  
5150 Prairie Stone Parkway  
Hoffman Estates, IL 60192-3707  
Telephone (847) 645-3600  
Facsimile (847) 645-6201

Bosch Rexroth Corporation  
Pneumatics  
1953 Mercer Road  
Lexington, KY 40511-1021  
Telephone (859) 254-8031  
Facsimile (859) 281-3491

Bosch Rexroth Corporation  
Mobile Hydraulics  
1700 Old Mansfield Road  
Wooster, OH 44691-0394  
Telephone (330) 263-3300  
Facsimile (330) 263-3333