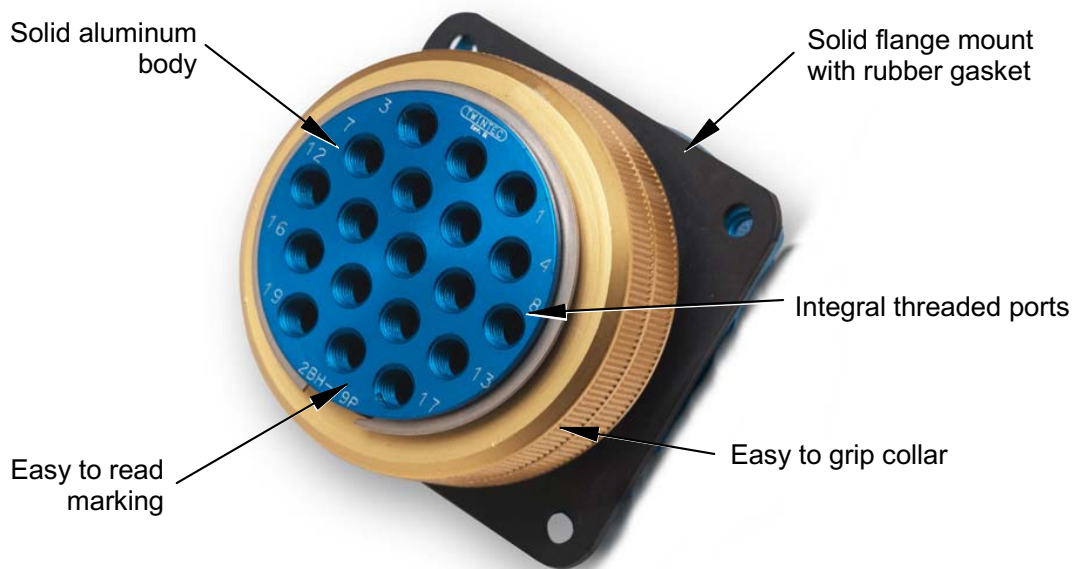


## "BH" SERIES

### TWINTEC MULTIPLE TUBE QUICK DISCONNECT WITH THREADED PORTS



The best way to quick disconnect all of your tubes  
in seconds.

With the largest selection of multiple tube connectors, you can connect your tubes in 6 seconds and have the durable good looks of a Twintec connector.

By using our BH series quick disconnect you get the most versatile multiple tube connector available, with the accuracy, reliability and cabinet protection of solid CNC machined aluminum construction.



[www.twintecinc.com](http://www.twintecinc.com)

1-800-979-9645

# "BH" SERIES WITH THREADED PORTS



1BH-7



2BH-19



2.5" SPECIAL



3BH-7

1"			
#	Type	Dist.	Part #
4	10-32	.42	1BH-4
7	10-32	.30	1BH-7

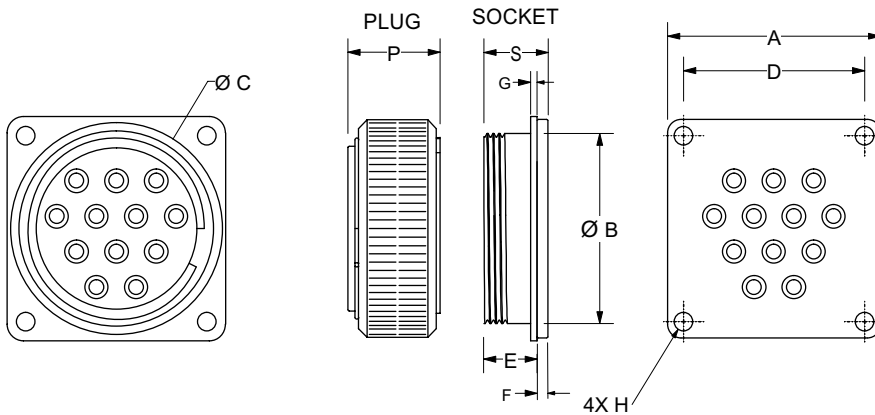
Part # is for a complete assembly. For a plug only add a "P" to the end. For a socket only add an "S" to the end.

2"			
#	Type	Dist.	Part #
8	10-32	.41	2BH-8
12	10-32	.40	2BH-12
16	10-32	.32	2BH-16
19	10-32	.30	2BH-19

2.5"			
#	Type	Dist.	Part #
5	1/4" NPT	.79	2.5BH-5
9	1/8" NPT	.56	2.5BH-9
22	10-32	.30	2.5BH-22

3"			
#	Type	Dist.	Part #
7	3/8" NPT	.79	3BH-7
8	1/4" NPT	.82	3BH-8

# = Number of lines.  
Dist. = Port center to center

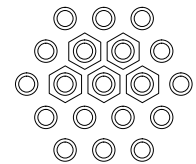


### Standard Specifications:

Max. PSI: 125  
O-ring: Buna-N  
Gasket: EPDM  
Body: Aluminum  
Finish: Blue and Gold Anodize

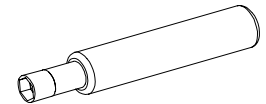
	A	B	C	D	E	F	G	H	P	S
1BH	1.20	1.07	1.25	0.95	0.38	0.10	0.06	0.13	0.43	0.55
2BH	2.00	1.75	2.00	1.70	0.50	0.10	0.06	10-32	0.87	0.60
2.5BH	2.50	2.25	3.50	2.125	0.50	0.14	0.06	0.18	0.65	0.79
3BH	3.35	3.00	4.00	2.50	0.75	0.25	0.06	0.25	0.75	1.00

Fitting alignment for .30" port spacing  
.25" max. hex.



### JACKET ADAPTERS

Jacket adapters provide a way to contain the tubing bundle into a jacketing tube for an attractive way to add protection. Works with corrugated hose, smooth tubing or spiral wrapping.



Use Part # FD-25, .25" Fitting driver

For all 1" series		For all 2" series		For all 3" series	
Tube ID	Part #	Tube ID	Dash	Tube ID	Dash
0.50	1JA-05	1.00	2JA-10	1.00	2.5JA-10
0.75	1JA-07	1.25	2JA-12	1.25	2.5JA-12
0.88	1JA-08	1.50	2JA-15	1.50	2.5JA-15

Note: Subtract .10" from the jacket ID to get the bushing ID.



### Installation:

Remove collar retaining ring before assembly. Run tubes through jacketing, install bushing into jacket with tubes going through the bushing, press tubes into fittings, sandwich plug body and jacket bushing between shell halves. Tighten two screws alternately until plug and bushing won't spin. Use a wire tie or hose clamp to fix jacketing onto bushing.

Special port and line configurations welcome.

Visit our website or call toll free. Available with integral fittings - see our "BC" series.

[www.twintecinc.com](http://www.twintecinc.com) 1-800-979-9645

19639 70th Ave. So., Kent WA 98032-1138