

Compact Hydraulics



Compact Hydraulics

To extend the capabilities of hydraulic equipment, Bosch Rexroth offers a complete range of priority flow controls and flow diverters for compact hydraulics. Flow diverters, also known as circuit selectors, are available as 3- or 6-way single valves but can also be banked to create up to 14 configurations. Flow diverters can extend hydraulic control capabilities by allowing operators to control multiple operations through a single directional valve. They can be operated electrically, manually, or via pilot pressure. Heavy-duty priority flow controls, known as hammer valves, supply auxiliary hydraulic power for mobile hydrostatic systems from existing hydraulics – without modifying a directional control valve.

To go directly to a specific type click on one of the titles below.



Cartridge Valves



Attachment Valves



Compact Modular Directional Valves



High Performance Load Holding and Motion Control


Compact Hydraulics



Cartridge Valves

Already well established in many applications, our Cartridge Program is continually supplemented with market-driven solenoid and mechanical valve designs. Cartridges are designed both for the UNFthreaded, industry common cavities and particularly for counterbalance valves, in other well known cavity configurations. Exacting performance standards are brought to reality in Bosch Rexroth Oil Control's state-of-the-art production facilities, creating the market's most cost-effective, highly engineered valves.

Click the page numbers to open the PDF file.

Cartridge Valves		
Product Photo	Description	Catalog
	<p>Bosch Rexroth Oil Control Cartridge Program</p>	<p>RA 00 162-03</p>

Click here for
GoTo Products:
Focused Delivery
Program



Compact Hydraulics



Attachment Valves

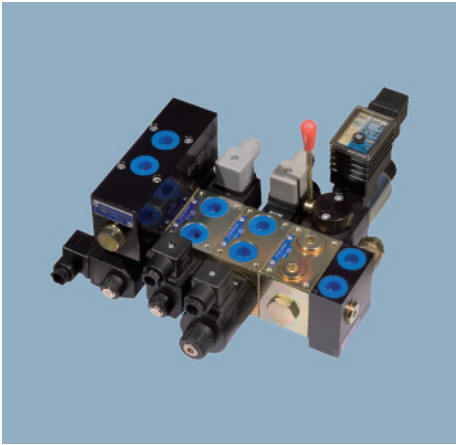
The A-VRFC3C series provide a simple and efficient way to supply hydraulic power to auxiliary work tools and attachments, especially on earth moving machines such as loaders and excavators. These valves have a 3-way configuration: one pump inlet port and two outlet ports for priority and by-pass flow. The priority port gives fully pressure compensated flow, power limited by a relief valve and available on demand by energizing the solenoid cartridge. Priority flow rate and relief pressure are adjustable. The inlet flow in excess of the priority flow is directed to the by-pass port. Similar operation is found in the two pumps version with two pump inlets and one combined priority port. Series A-VRFC2C is designed for installation on load sensing systems.

Click the page numbers to open the PDF file.

Attachment Valves		
Product Photo	Description	Catalog
	Heavy Duty Priority Flow Controls	RA 90 810
	Flow Diverters	RA 90 811

**Click here for
GoTo Products:**
*Focused Delivery
Program*



Compact Hydraulics



Compact Modular Directional Valves

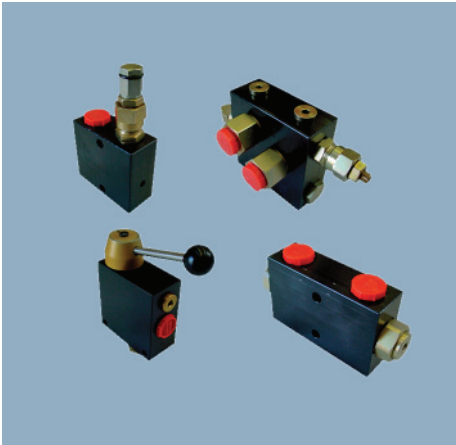
Applications in backhoe loaders, wheel loaders, pavers. Drilling equipment, small cranes, fork lift trucks, telehandlers, portal-type fork lift trucks, aerial work platforms. Municipal vehicles, forestry machinery, agricultural machinery.

Click the page numbers to open the PDF file.

Modular Directional Valves		
Product Photo	Description	Catalog
	<p>Compact Modular Directional Valve Catalog</p>	<p>RE 00 159</p>
	<p>Compact Power Module Program</p>	<p>RA 00 167</p>

Click here for
GoTo Products:
Focused Delivery
Program


Compact Hydraulics



High Performance Load Holding and Motion Control

Load Holding - Motion Control Catalog
Including flow / pressure controls and
special valve modules

Click the page numbers to open the PDF file.

High Performance Load Holding		
Product Photo	Description	Catalog
	<p>Load Holding - Motion Control</p>	<p>RE 00 171</p>

Click here for
GoTo Products:
*Focused Delivery
Program*