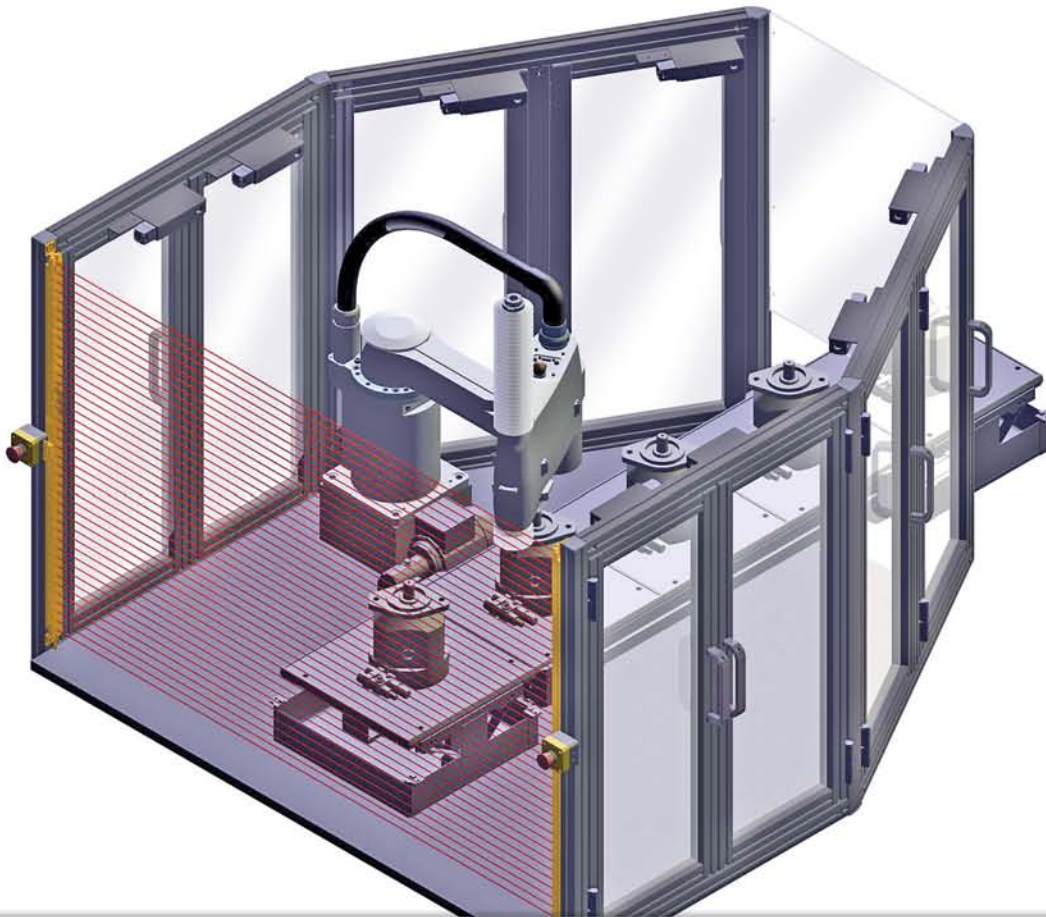




Airline

Machine Safeguarding



Safety Products & Turnkey Safeguarding Solutions

Airline will help you comply with required safety standards including:

OSHA 29 CFR 1910 Subpart J - The Control of Hazardous Energy (Lockout/Tagout)

ISO 13849 - Safety of Machinery

NFPA 79 - Electrical Standard for Industrial Machinery

NFPA 70E - Standard for Electrical Safety in the Workplace

ANSI Standards - Safety Design Standards for Machines and Machine Tools

1-800-999-SERV (7378)

www.airlinehyd.com



Airline

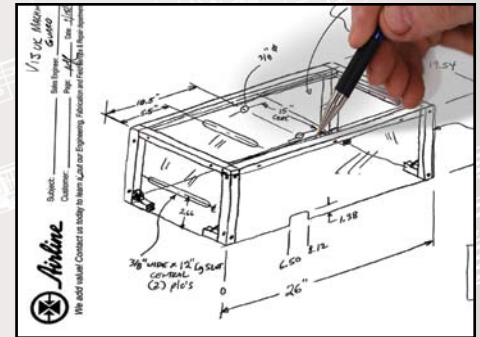
Your single source for safety!

Airline's multi-million dollar inventory of fluid power, automation, safety and motion control products and our dedication to exceptional customer service are key to our six decades of success. However, Airline also has the in-house capability to help our customers ascertain the safety of their work environment, determine necessary corrections, custom-design systems, install the system, and validate the results. Our cost-effective machine safeguarding solutions will reduce your liability and bring you into compliance with important safety standards. **Let Airline help you reach your objective of an injury-free environment.**

Airline Risk Assessment

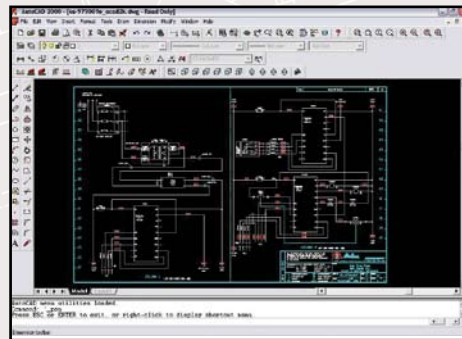
Assessment of Client: **APL**
 Date: **May 7, 2014**
 Location: **APL - 10000 S. 100th St. - Omaha, NE 68134**
 Client Name: **J. Smith (781) 111-1111**

Reference	Serial #	Equipment ID #	Manufacturer/Model	Year	Age	Site / Station	Productive Utilization	Priority of Work	Photograph
1	1	APL	General Purpose Lathe	1980	34	APL - 10000 S. 100th St. - Omaha, NE 68134	100%	High	
2	2	APL	General Purpose Lathe	1980	34	APL - 10000 S. 100th St. - Omaha, NE 68134	100%	High	
3	3	APL	General Purpose Lathe	1980	34	APL - 10000 S. 100th St. - Omaha, NE 68134	100%	High	
4	4	APL	General Purpose Lathe	1980	34	APL - 10000 S. 100th St. - Omaha, NE 68134	100%	High	
5	5	APL	General Purpose Lathe	1980	34	APL - 10000 S. 100th St. - Omaha, NE 68134	100%	High	



1. We will perform a risk assessment of the machines on your plant floor to help you determine the hazards present, both visible and hidden, recommend how to eliminate or reduce the hazard, and prioritize your implementation.

2. An Airline Application Engineer will consult with you at your site to develop concepts based on your needs.



3. The engineering group at Airline will generate CAD drawings for your approval. These drawings will consist of hard guarding and control system designs.



4. Airline's fabrication facilities allow us to integrate our power, automation, safety, control and framing products to deliver cost-effective solutions.



5. When manufacturing has been completed, Airline does a full test to ensure proper safety functionality and performance of the system.



6. Airline's field service team can deliver and install your newly-manufactured guarding system as well as service existing equipment.



Call 1-800-999-SERV (7378)

www.airlinehyd.com





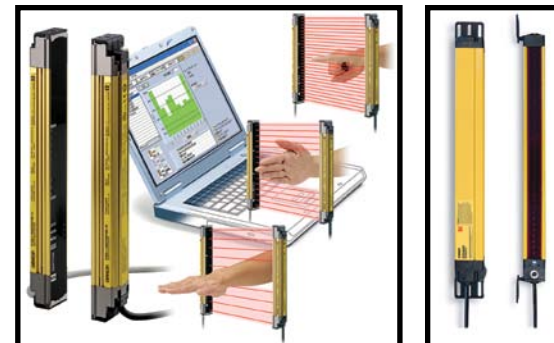
Consulting Services



Interlock Switches



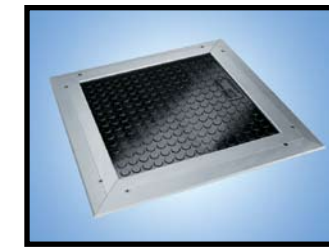
Rope Pull Switches



Safety Light Curtains



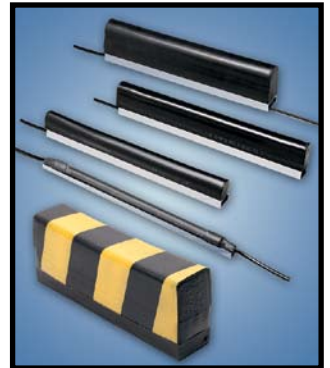
Laser Scanners



Safety Mats



Bumpers & Edges



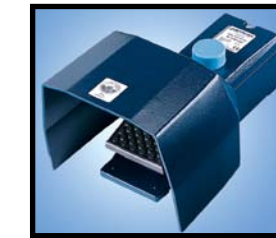
Ergonomic Systems and Components



Emergency Stop Pushbuttons



Lockout Tagout



Enabling Devices



Mechanical Guarding



Sound Abatement Enclosures

Airline Total Safety Solutions



Safety Networks



Mechanically Linked Relays & Contactors



Non-Contact Switches



Machine Tool Guarding at Point of Operation



Switch Rated Connectors



Personal Protective Equipment for Electrical Safety



Control Reliable Hydraulics



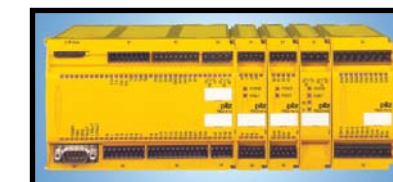
Control Reliable Pneumatics



Safety PLCs



Safety Monitoring Relays



Measure the value of a supplier above and beyond a quality product....



...Airline measures up!

- Hydraulics
- Pneumatics
- Automation
- Drives and Controls
- Fluid Connectors
- Lubrication Solutions
- Marine and Mobile Systems
- PLC and Sensing Technologies
- Sub-Assemblies
- Modular Framing Structures
- Safety Systems
- Repair and Field Service



Locations throughout the Northeast to serve you.

HEADQUARTERS - BENSLEM (Philadelphia), PA
 3557 Progress Drive • P.O. Box 8505 • Bensalem, PA 19020
 (215) 638-4700 • Fax: (215) 638-1707

YORK
 2A Interchange Place
 York, PA 17406
 (717) 767-6466
 Fax: (717) 764-2147

PITTSBURGH
 145 Delta Drive
 Pittsburgh, PA 15238
 (877) 288-6623
 (412) 963-6633
 Fax: (412) 963-7040

**SOUTH JERSEY
 MARINE & MOBILE SYSTEMS**
 428 Woodbine-Ocean View Road
 Ocean View, NJ 08230
 (877) MARINE 2
 (609) 624-3700
 Fax: (609) 624-0863

NEW ENGLAND
 2 Sterling Rd., Unit 2C
 N. Billerica, MA 01862
 (866) REXROTH
 (978) 353-0200
 Fax: (978) 353-3084

NEW YORK STATE
 200 Mile Crossing Blvd.
 Suite 1B
 Rochester, NY 14624
 (800) 999-7378
 Fax: (716) 630-0895



Call 1-800-999-SERV (7378)

www.airlinehyd.com