
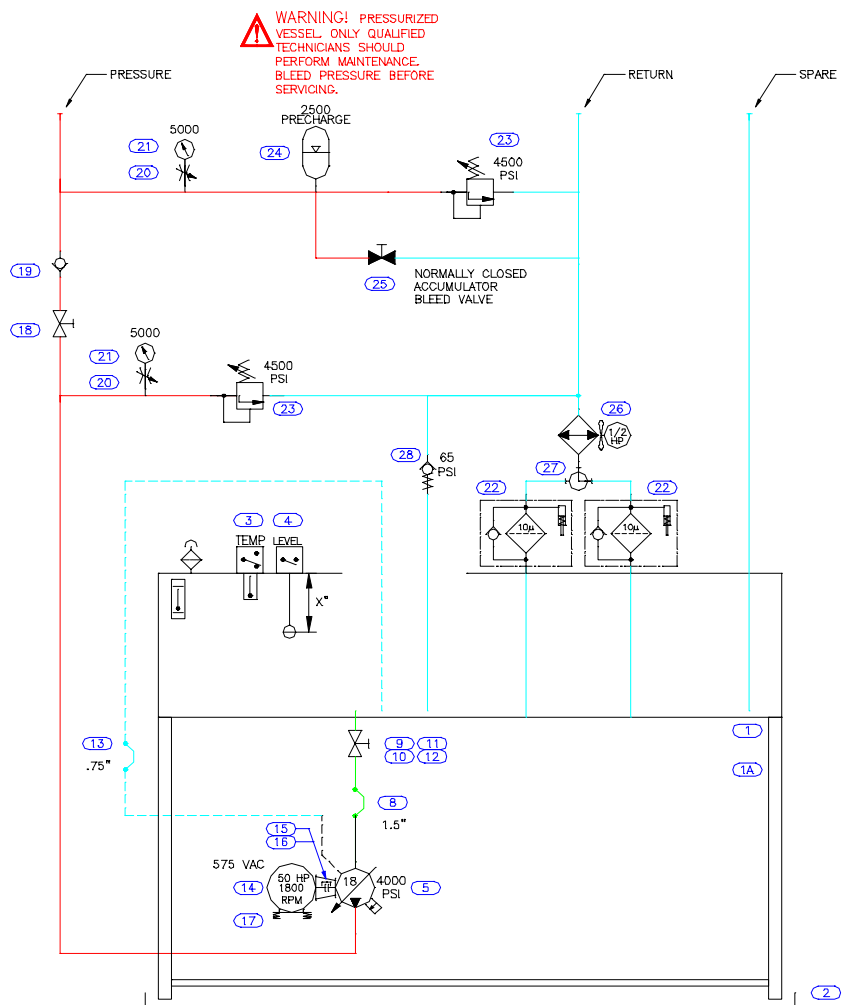


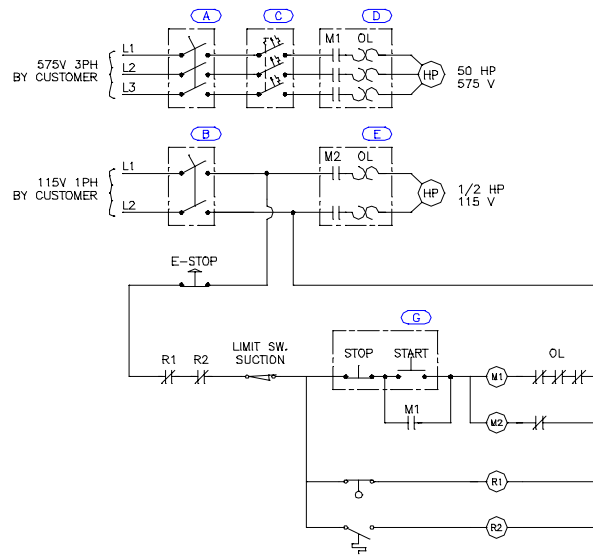
ALL A AND B CONNECTIONS ON MANIFOLD
ARE SAE-8 (3/4-16 FEMALE)

JOB #: A-15681	ALL TECHNICAL DATA DISCLOSED HEREIN IS THE PROPERTY OF AIRLINE AND SHALL NOT BE USED BY OTHERS FOR MANUFACTURE, PROCUREMENT, OR DISCLOSURE WITHOUT THE WRITTEN PERMISSION OF THE OWNER.		 I-95 and Street Road, Bensalem, PA. 19020 (215) 638-4700	
	TOLERANCES ON ALL DIMENSIONS, EXCEPT NOTED: DECIMALS: .X ± 0.03* FRACTIONS ± 1/16 .XX ± 0.01* ANGULAR ± 0.5° .XXX ± 0.005* FINISH: 32		TITLE: HYDRAULIC SCHEMATIC 30 GALLON POWER UNIT AND MANIFOLD	
⊥ PERPENDICULARITY ⊕ CONCENTRICITY — STRAIGHTNESS ⊕ TRUE POSITION / RUNOUT PARALLELISM □ FLATNESS ⊗ PROJECTION		DWG. #: 5681001H DATE: 12/18/01	SIZE: C REV.: JB SHEET: 1 OF 1	SCALE: NA

REV.	DESCRIPTIONS	DATE	BY
------	--------------	------	----



WARNING! PRESSURIZED VESSEL. ONLY QUALIFIED TECHNICIANS SHOULD PERFORM MAINTENANCE. BLEED PRESSURE BEFORE SERVICING.

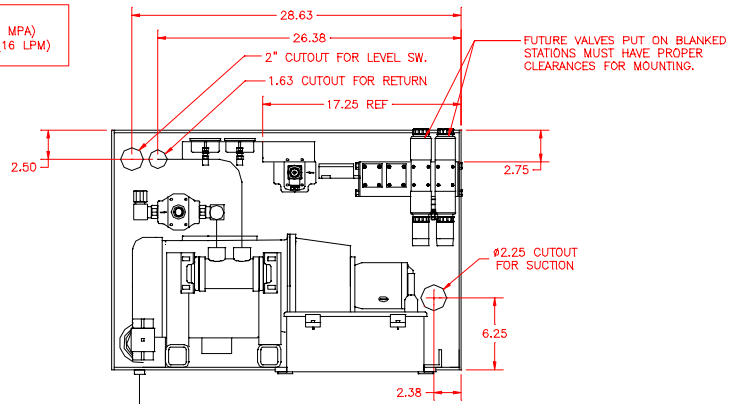


- NOTES:
- DESIGNED FOR USE WITH MINERAL BASED FLUIDS.
 - PUMP FLOW: 18 GPM NOMINAL FLOW. MAX VOLUME LIMITER CAN DECREASE FLOW.
 - SET RELIEF VALVES AS SHOWN.
 - SHIP UNIT WITH COMPENSATOR AT LOW SETTING.

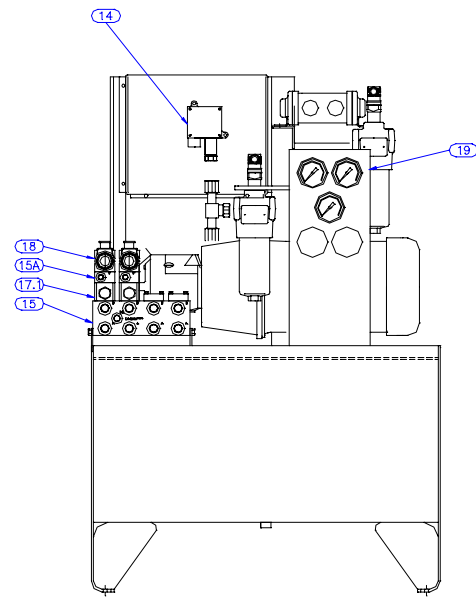
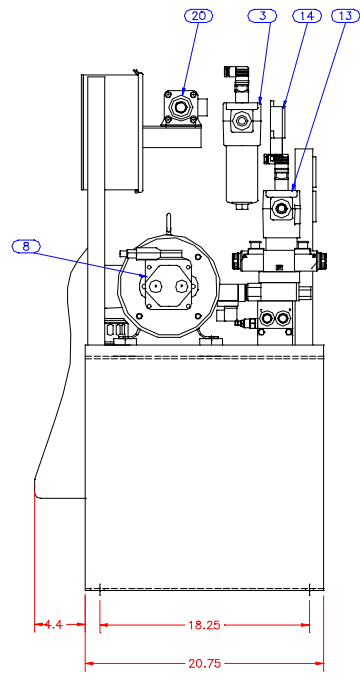
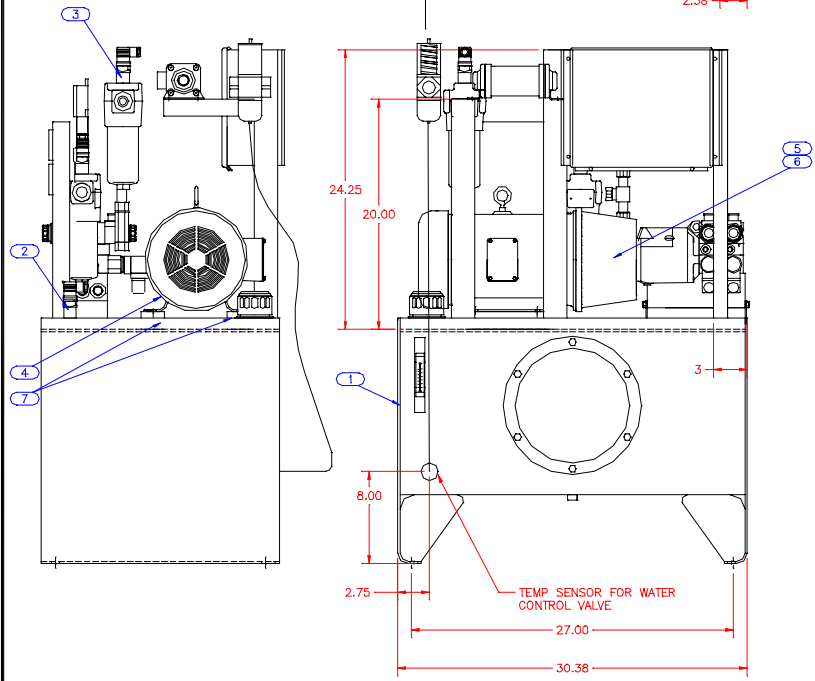
COLOR LEGEND	
—	SUCTION
—	PRESSURE
—	RETURN


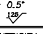
JOB #: A-974G	ALL TECHNICAL DATA DISCLOSED HEREIN IS THE PROPERTY OF AIRLINE AND SHALL NOT BE USED BY OTHERS FOR MANUFACTURE, PROCUREMENT, OR DISCLOSURE WITHOUT THE WRITTEN PERMISSION OF THE OWNER.	 Airline Machinery Group 1-95 and Street Road, Bensalem, PA. 19080 (215) 858-4700	TITLE: HYDRAULIC SCHEMATIC AND WIRING DIAGRAM	
	TOLERANCES ON ALL DIMENSIONS, EXCEPT NOTED: DECIMALS: .X ± 0.03* FRACTIONS ± 1/16 .XX ± 0.01* ANGULAR ± 0.5° .XXX ± 0.005* FINISH:		DWG # 9746001H	SIZE: C
⊥ PERPENDICULARITY — STRAIGHTNESS / RUNOUT □ FLATNESS	⊙ CONCENTRICITY ⊕ TRUE POSITION PARALLELISM ⊙ Δ PROJECTION	DATE: 3/5/02	REV: JB	SHEET: 1 OF 1

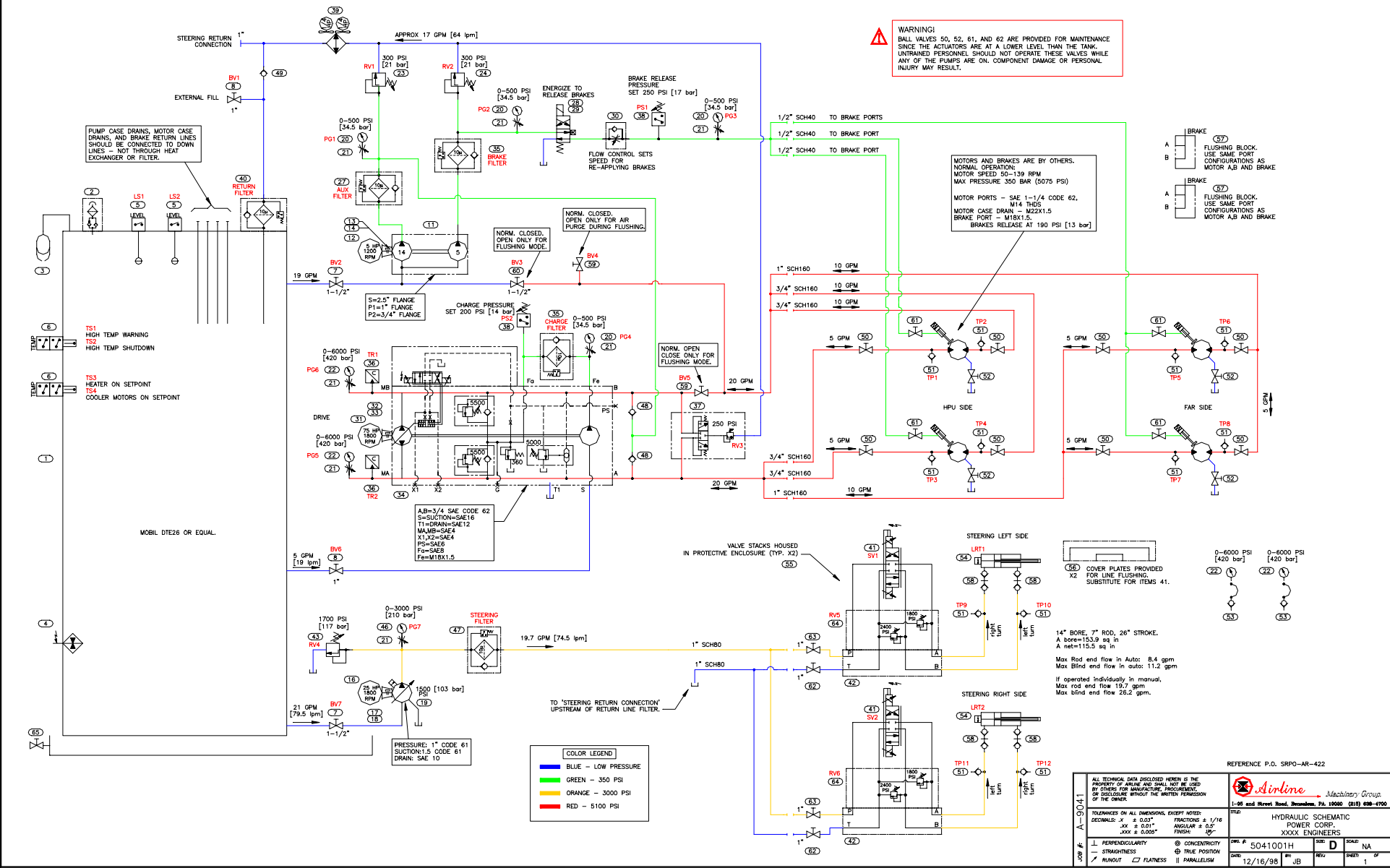
INSTALL NAMETAG ON UNIT.
 TANK VOLUME 30 U.S. GAL (114 L)
 MAX. SYSTEM PRESSURE 3000 PSI (20 MPA)
 MAX. MOTOR/PUMP OUTPUT 4.3 GPM (16 LPM)
 AT 1900 PSI (11 MPA)



NOTES:
 1) ALL NUTS, HARDWARE MUST BE MASKED FROM PAINT.
 2) ALL ITEMS MUST BE TAGGED WITH PHENOLIC NAMEPLATES CORRESPONDING TO BOM ITEM NUMBER.



JOB #: A-5681	ALL TECHNICAL DATA DISCLOSED HEREIN IS THE PROPERTY OF AIRLINE AND SHALL NOT BE USED BY OTHERS FOR MANUFACTURE, PROCUREMENT, OR DISCLOSURE WITHOUT THE WRITTEN PERMISSION OF THE OWNER.		 1-95 and Street Road, Bensalem, PA 19020 (215) 636-4700	
	TOLERANCES ON ALL DIMENSIONS, EXCEPT NOTED: DECIMALS: .X ± 0.03" FRACTIONS ± 1/16 .XX ± 0.01" ANGULAR ± 0.5° .XXX ± 0.005" FINISH: 		TITLE: HYDRAULIC POWER UNIT 30 GALLON	
⊥ PERPENDICULARITY — STRAIGHTNESS / RUNOUT □ FLATNESS	⊙ CONCENTRICITY ⊕ TRUE POSITION PARALLELISM ⊞ PROJECTION	DWG. #: 5681002M	SIZE: C	SCALE: NA
		DATE: 12/18/01	BY: JB	REV. SHEET: 1 OF 1



PUMP CASE DRAINS, MOTOR CASE DRAINS, AND BRAKE RETURN LINES SHOULD BE CONNECTED TO DOWN LINES - NOT THROUGH HEAT EXCHANGER OR FILTER.

TS1 HIGH TEMP WARNING
TS2 HIGH TEMP SHUTDOWN
TS3 HEATER ON SETPOINT
TS4 COOLER MOTORS ON SETPOINT

MOBIL DTE26 OR EQUAL.

COLOR LEGEND
BLUE - LOW PRESSURE
GREEN - 350 PSI
ORANGE - 3000 PSI
RED - 5100 PSI

AB=3/4 SAE CODE 62
S=SUCTION=SAE16
TI=DRAIN=SAE12
MA,MB=SAE4
X1,X2=SAE4
PS=SAE6
F=SAE8
Fem=M18X1.5

PRESSURE: 1" CODE 61
SUCTION=1.5 CODE 61
DRAIN: SAE 10

TO 'STEERING RETURN CONNECTION' UPSTREAM OF RETURN LINE FILTER.

MOTORS AND BRAKES ARE BY OTHERS.
NORMAL OPERATION:
MOTOR SPEED 50-139 RPM
MAX PRESSURE 350 BAR (5075 PSI)
MOTOR PORTS - SAE 1-1/4 CODE 62, M14 THDS
MOTOR CASE DRAIN - M22X1.5
BRAKE PORT - M18X1.5
BRAKES RELEASE AT 190 PSI [13 bar]

BRAKE
A : FLUSHING BLOCK. USE SAME PORT CONFIGURATIONS AS MOTOR A,B AND BRAKE
B : FLUSHING BLOCK. USE SAME PORT CONFIGURATIONS AS MOTOR A,B AND BRAKE

COVER PLATES PROVIDED X2 FOR LINE FLUSHING. SUBSTITUTE FOR ITEMS 41.

14" BORE, 7" ROD, 26" STROKE.
A bore=153.9 sq in
A net=115.5 sq in
Max Rod end flow in auto: 8.4 gpm
Max Blind end flow in auto: 11.2 gpm
If operated individually in manual,
Max rod end flow 19.7 gpm
Max blind end flow 26.2 gpm.

REFERENCE P.O. SRPO-AR-422

JOB #	5041001H	DATE	12/16/86	JOB	REV	SHEET	OF	1

