



## **HYDRAULIC ROTARY MANIFOLDS**

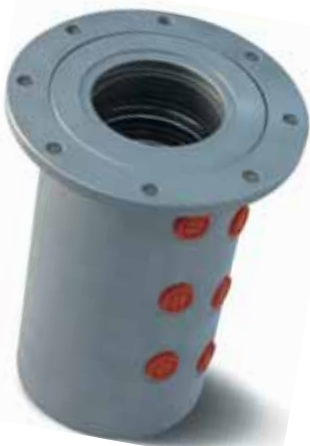


## ADVANCED TECHNOLOGY

In the spirit of our founders, our efforts in developing advanced hydraulic components are implemented to the highest level. Our Design and lab facilities permit us to design and test components that will work trouble free in the most demanding applications.

Our mission is to become our customer's ideal partner by supplying reliable, highest quality components at the best possible price.

All our plants are ISO Certified and constant control of the total process from raw material to finished products assures trouble free product are delivered to the customers.



## Hydraulic Rotary Manifolds

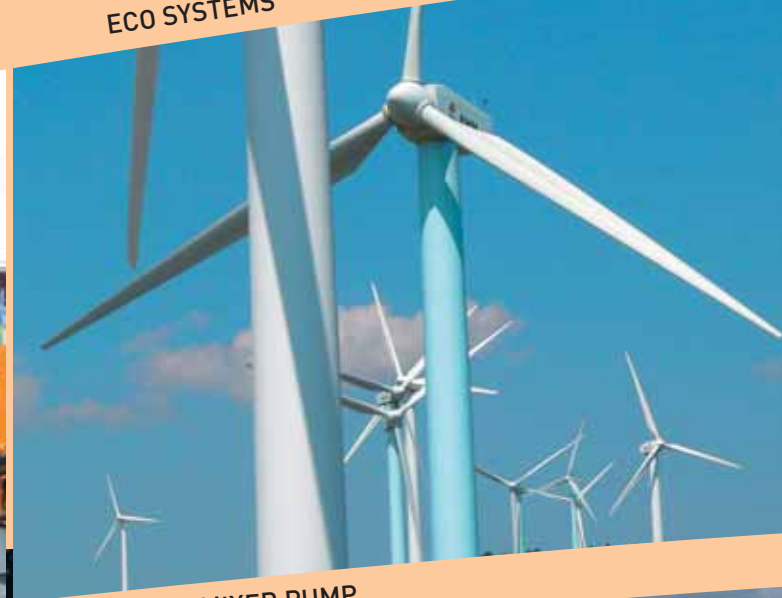
Swivel joints for the transmission of hydraulic oil, water and cooling fluid. Every model can be equipped with electrical swivel joint.

# Application Fields

CRANES



ECO SYSTEMS



EXCAVATORS



TRUCK-MIXER PUMP



TELEHANDLERS



AERIAL PLATFORMS



# Research and development

To choose Young Powertech and its technology is to entrust your equipment performance to a secure partner. Our know-how is at the service of our customer. Our experienced engineers will work side by side with yours to achieve the best result when designing new equipment. Our goal is to offer NEW SOLUTIONS.

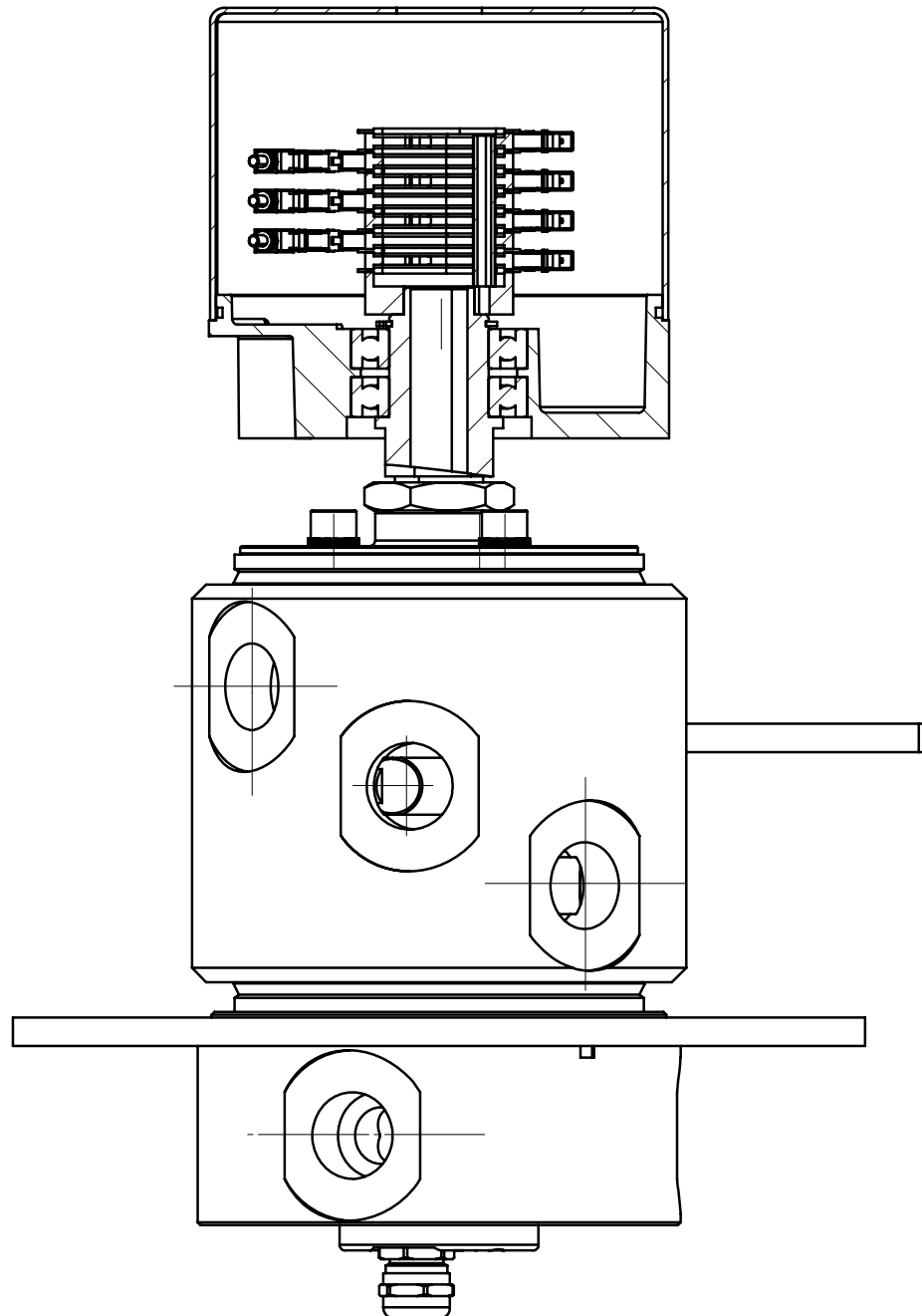
Thanks to our many years of experience in the Hydraulic field, Young Powertech and its suppliers can deliver personalized service for the design and installation of the most demanding applications and focus on ways to reduce costs. Our R&D department can work together with the customer to develop and personalize any high technological rotary manifold application.

Young Powertech and its suppliers are focused on developing new products based on customer's demand, to solve problems, reduce cost and to fill increasing requirements on performance in an ever changing market



# ELECTRICAL SWIVEL JOINT

## General technical informations

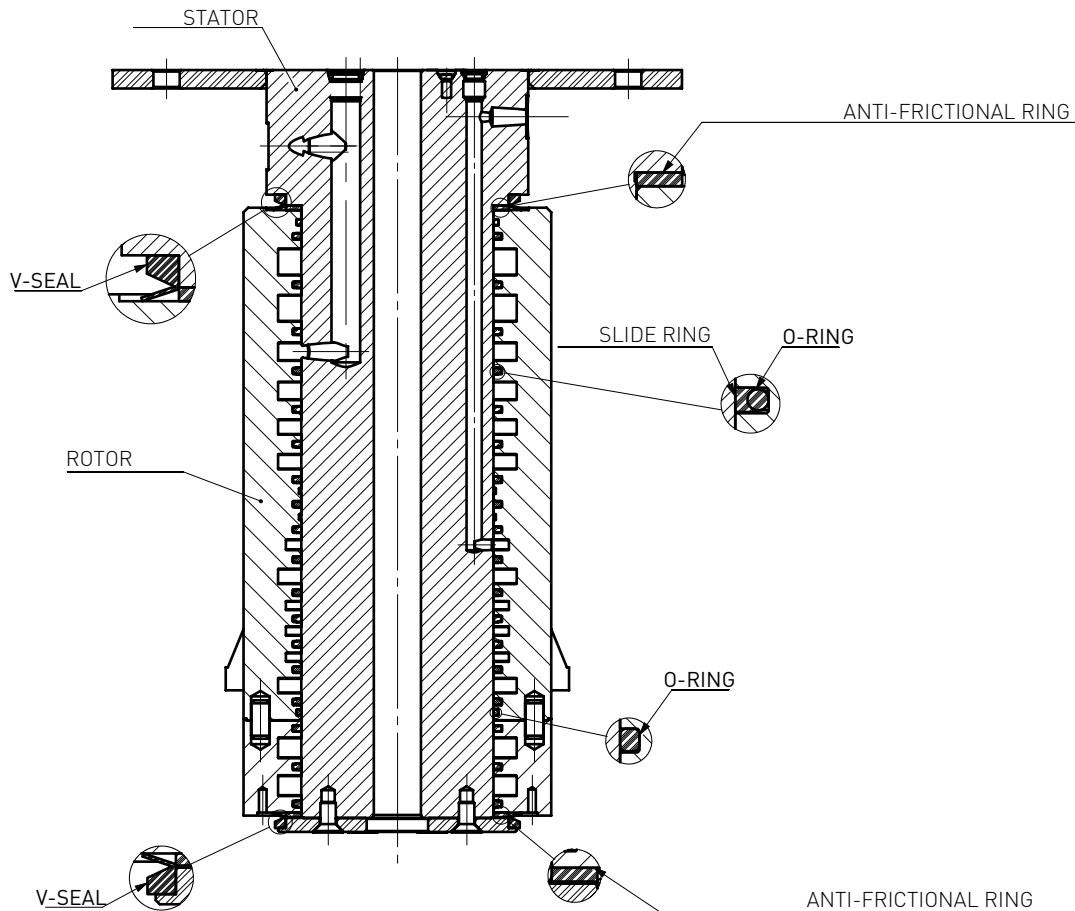


### ACCESSORIES:

Every model can be equipped with electrical swivel joint following the specification of the customer (compile the sheet about the electrical part).

# HYDRAULIC SWIVEL JOINT

## General technical informations



### CONSTRUCTION :

stator : C40 - aluminium; rotor : S35J2G3 - aluminium

### FLUIDS

hydraulic oil - DOT 4 - H2O - grease - hydrocarbons - gas

### SURFACE TREATMENTS

stator: hard chromium plating - nickel plating - hard oxidation

rotor: phosphatizing with manganese- nickel plating - hard oxidation

### SEALING COMPONENTS

seals in buna N - viton - EPDM - special teflon rings

### WORKING CONDITIONS

ideal operating range:  $-10^{\circ}\text{C} + 80^{\circ}\text{C}$

max operating temperature:  $90^{\circ}\text{C}$

min/max environment temperatures:  $-20^{\circ}\text{C} / +60^{\circ}\text{C}$

max rotating speed: 10 rpm

max pressure: 420 bar

working pressure: 350 bar

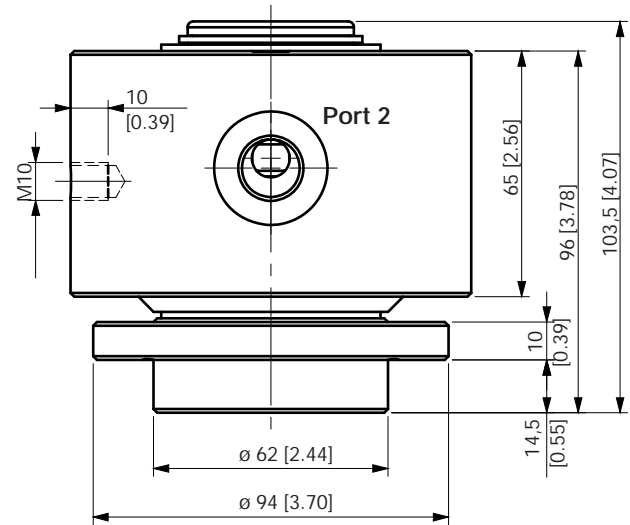
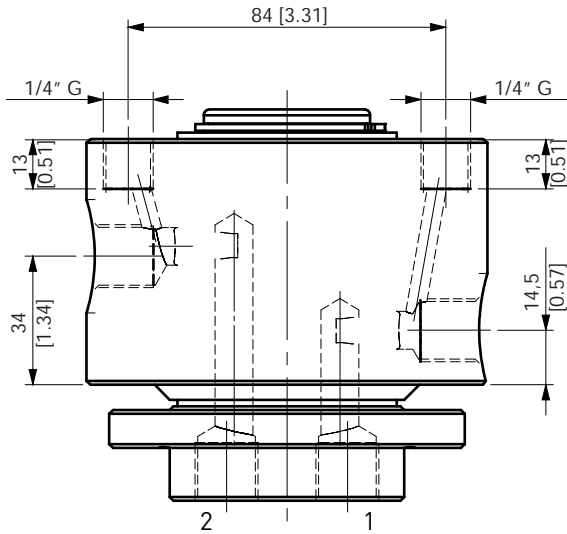
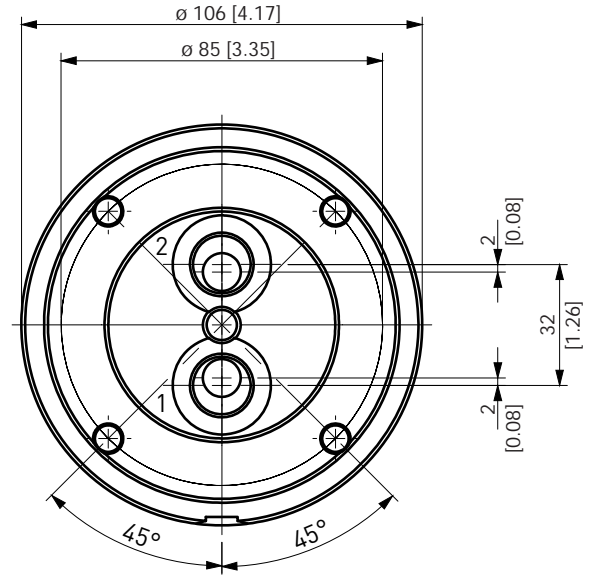
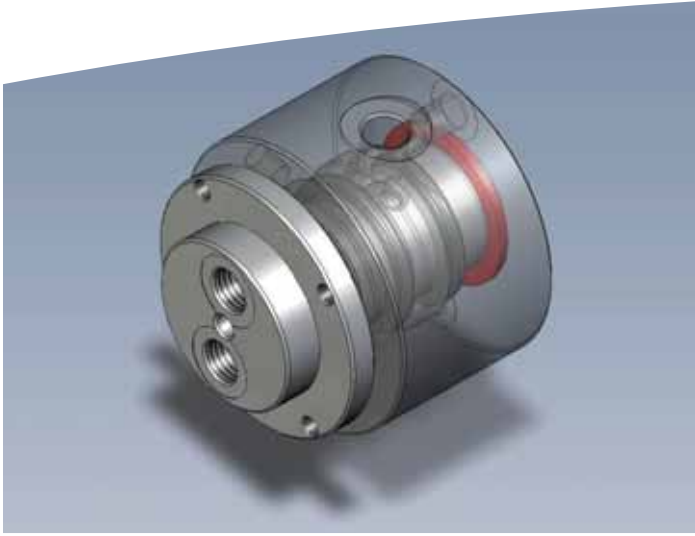
rotating torque: it depends by the model

starting torque: it depends by the model

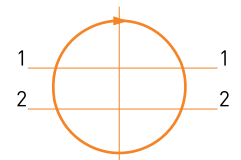
mounting position: vertical; axial and radial loads: no allowed

All the data of this catalogue are not reproducibles and can have modifications at discretion of hbs.

# SWIVEL JOINT 2 WAYS COD. D045020000

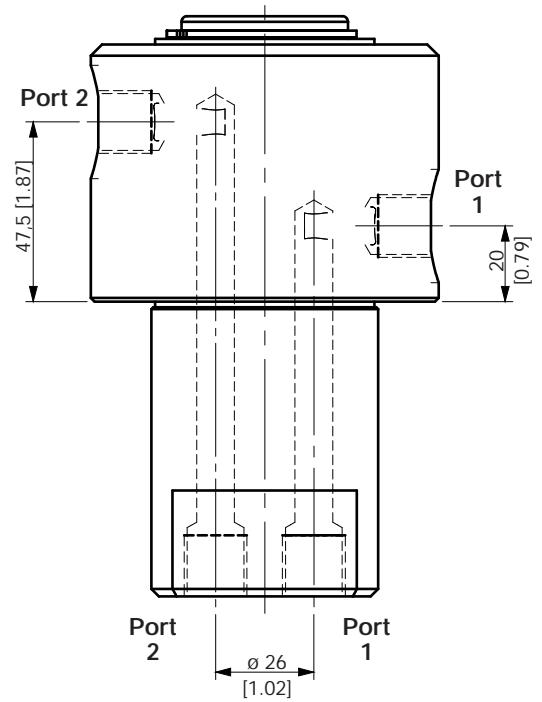
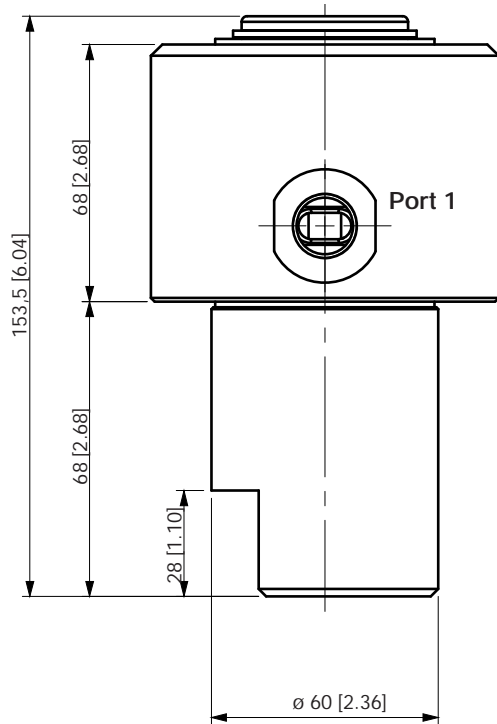
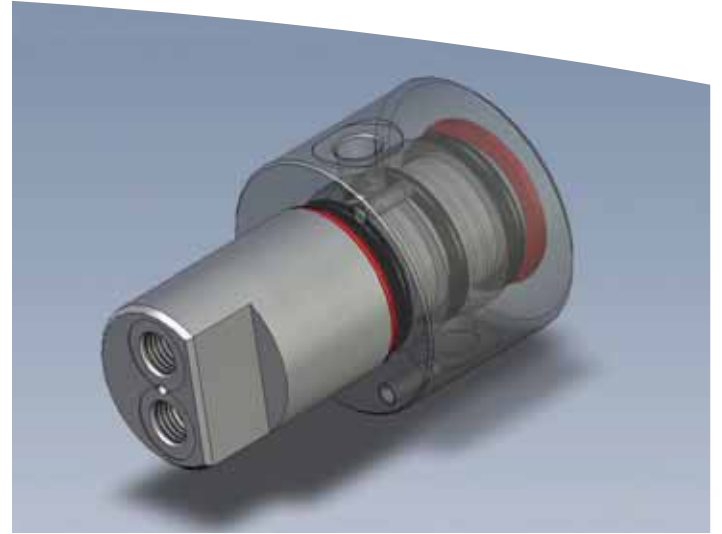
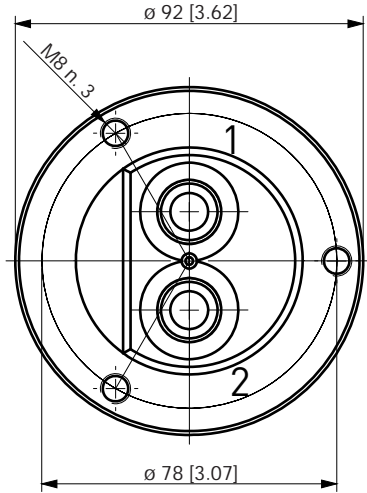


STATOR ROTOR

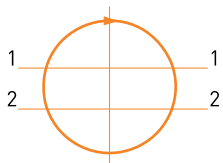


POS	STATOR	ROTOR	DN		WORKING PRESSURE		MAX PRESSURE		FLUID
			mm	inches	bar	PSI	bar	PSI	
1	3/8" G	3/8" G	10	[0.39]	380	5500	420	6100	hydraulic oil
2	3/8" G	3/8" G	10	[0.39]	380	5500	420	6100	hydraulic oil

# SWIVEL JOINT 2 WAYS COD. D045020200

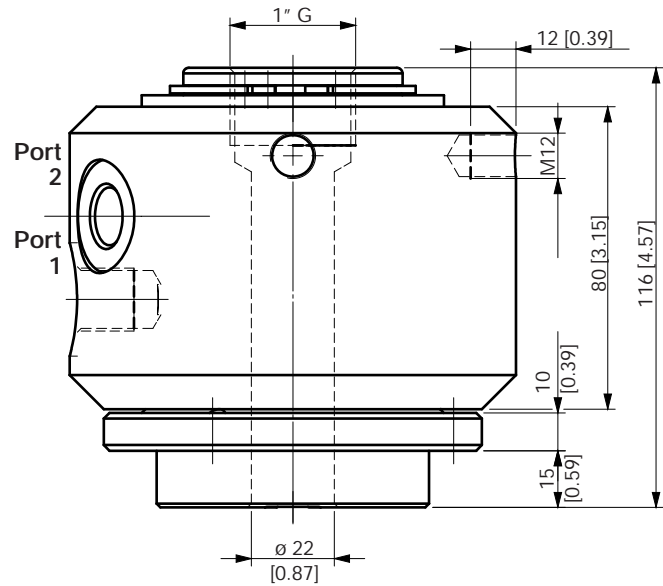
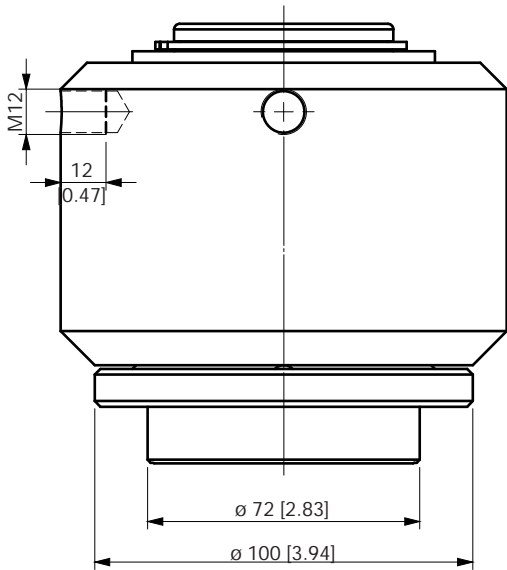
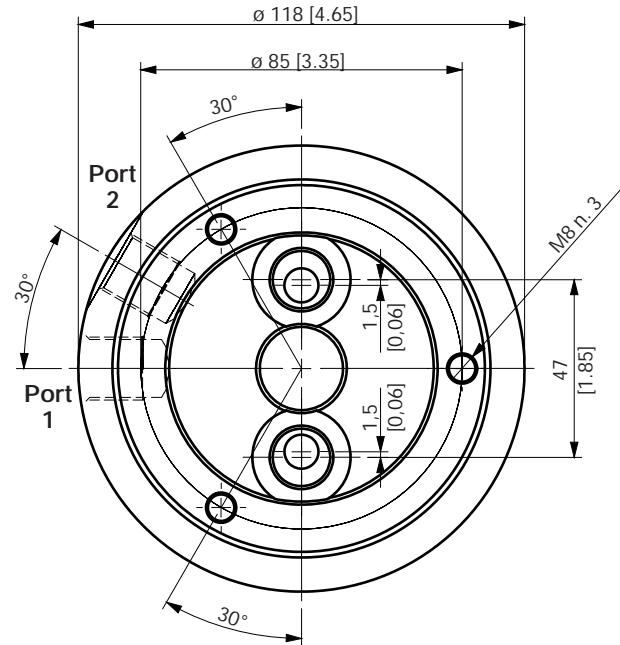
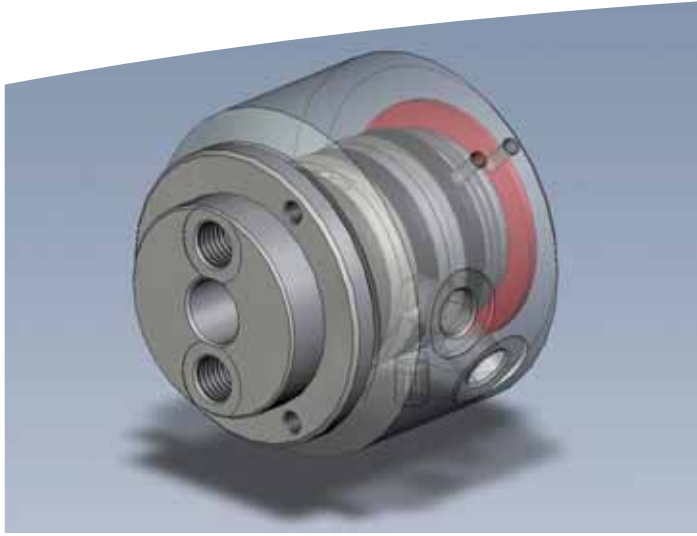


STATOR ROTOR

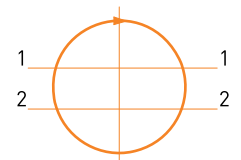


POS	STATOR	ROTOR	DN		WORKING PRESSURE		MAX PRESSURE		FLUID
			mm	inches	bar	PSI	bar	PSI	
1	3/8" G	3/8" G	10	[0.39]	380	5500	420	6100	hydraulic oil
2	3/8" G	3/8" G	10	[0.39]	380	5500	420	6100	hydraulic oil

# SWIVEL JOINT 2 WAYS COD. D060020100

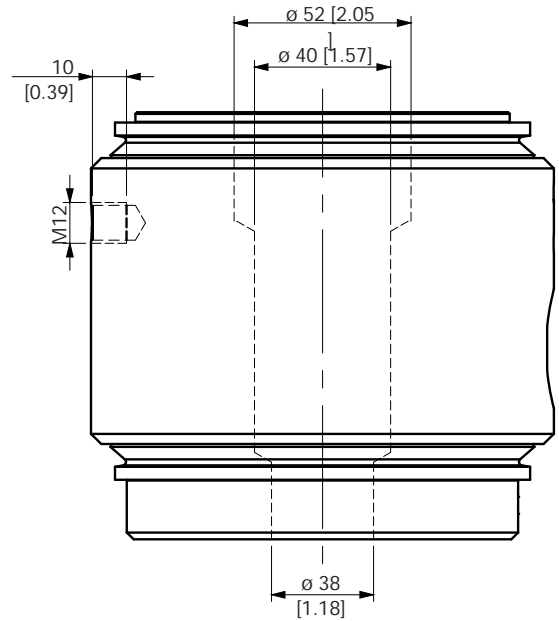
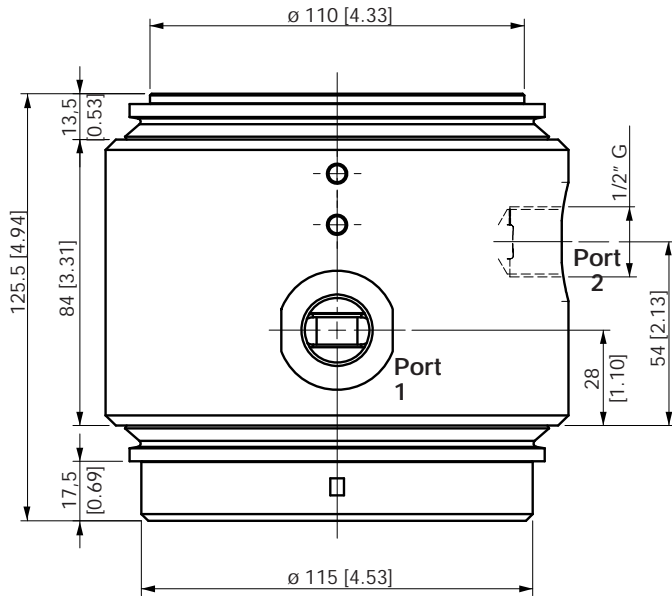
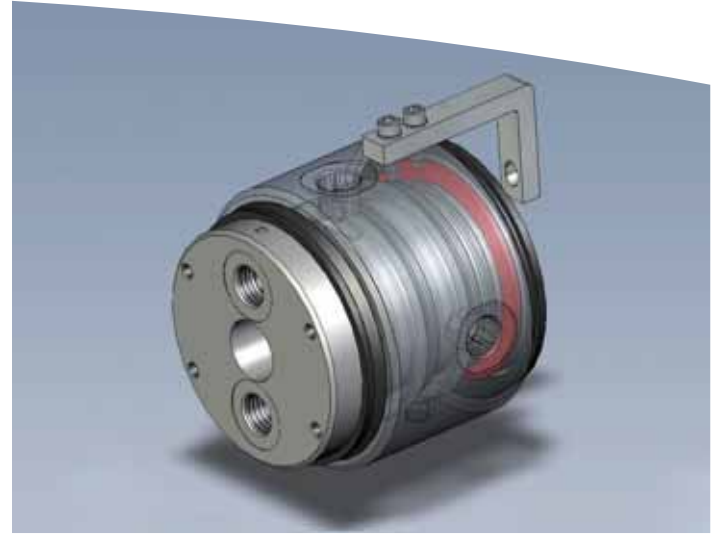
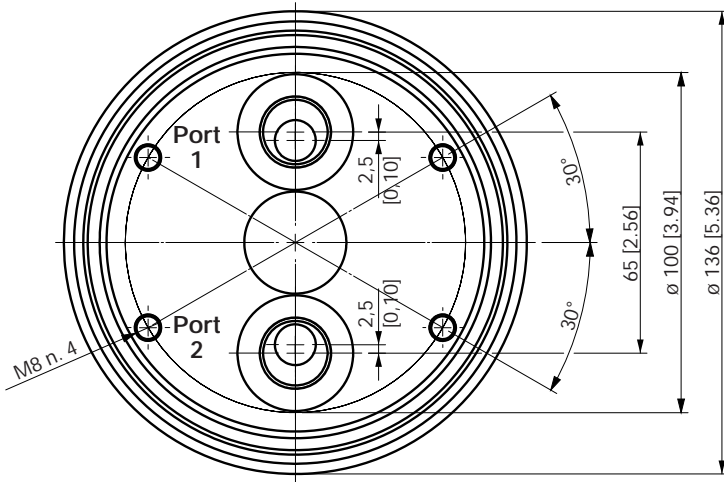


STATOR ROTOR

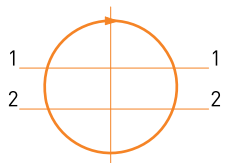


POS	STATOR	ROTOR	DN		WORKING PRESSURE		MAX PRESSURE		FLUID
			mm	inches	bar	PSI	bar	PSI	
1	3/8" G	3/8" G	9	[0.35]	380	5500	420	6100	hydraulic oil
2	3/8" G	3/8" G	9	[0.35]	380	5500	420	6100	hydraulic oil

# SWIVEL JOINT 2 WAYS COD. D085020000

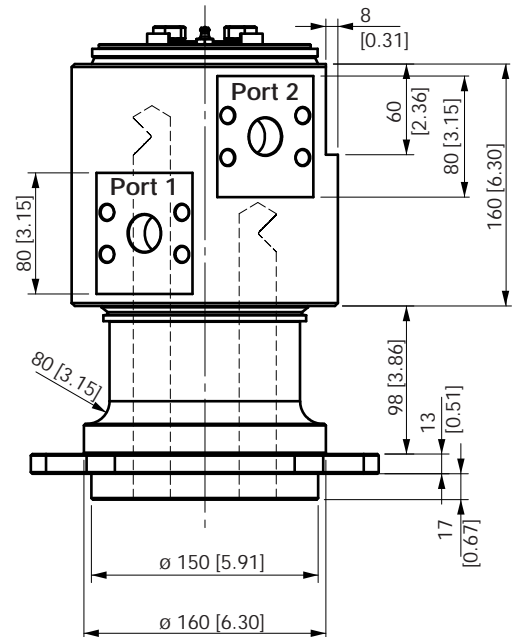
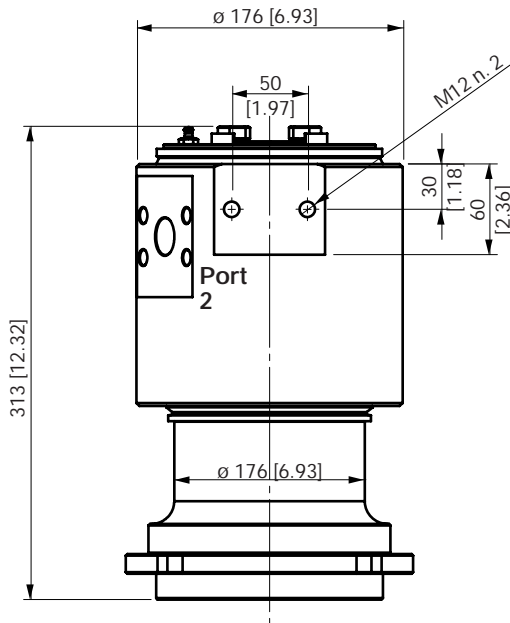
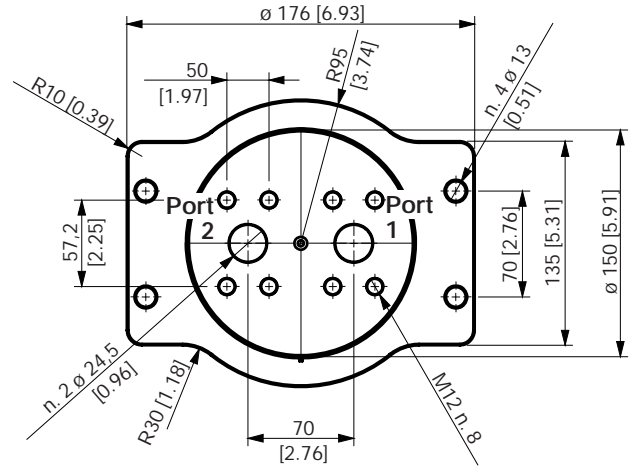
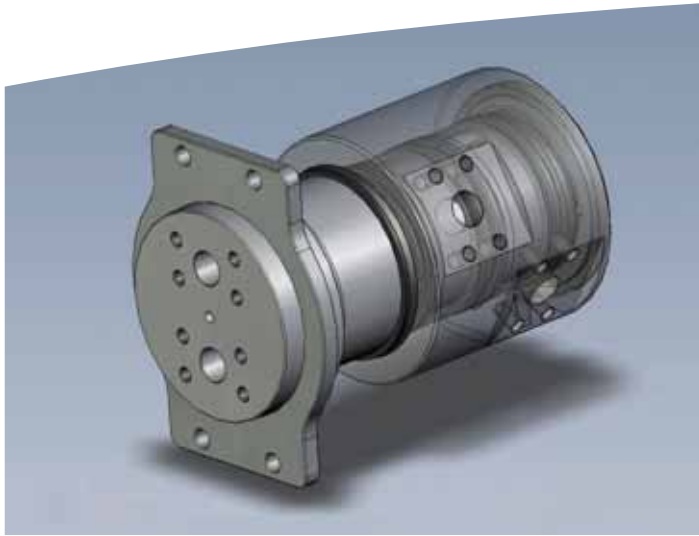


STATOR ROTOR

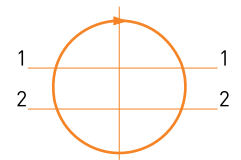


POS	STATOR	ROTOR	DN		WORKING PRESSURE		MAX PRESSURE		FLUID
			mm	inches	bar	PSI	bar	PSI	
1	3/8" G	3/8" G	12	[0.47]	380	5500	420	6100	hydraulic oil
2	3/8" G	3/8" G	12	[0.47]	380	5500	420	6100	hydraulic oil

# SWIVEL JOINT 2 WAYS COD. D105020300

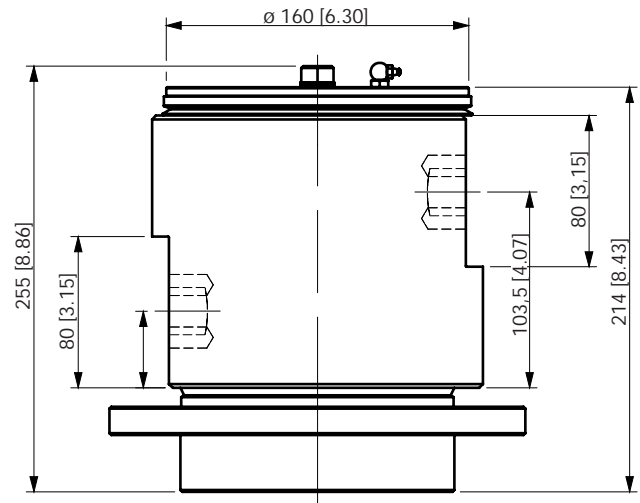
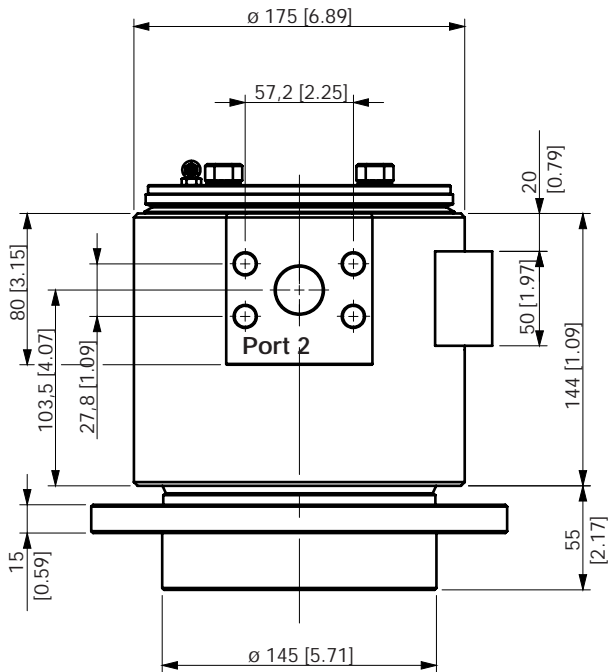
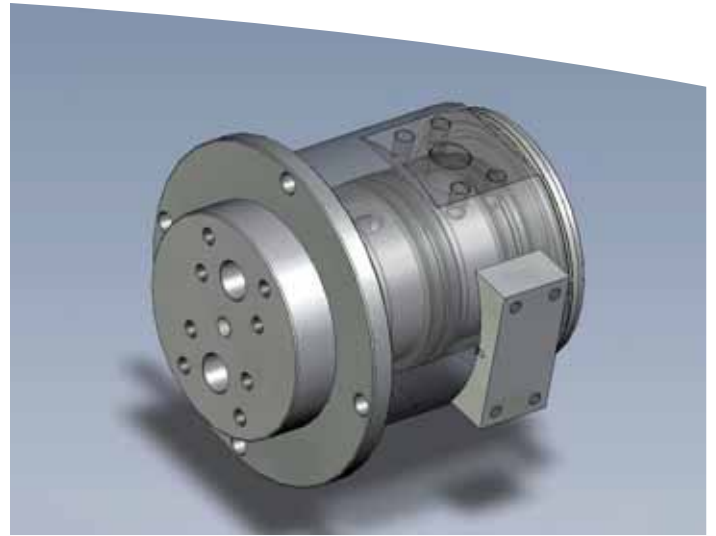
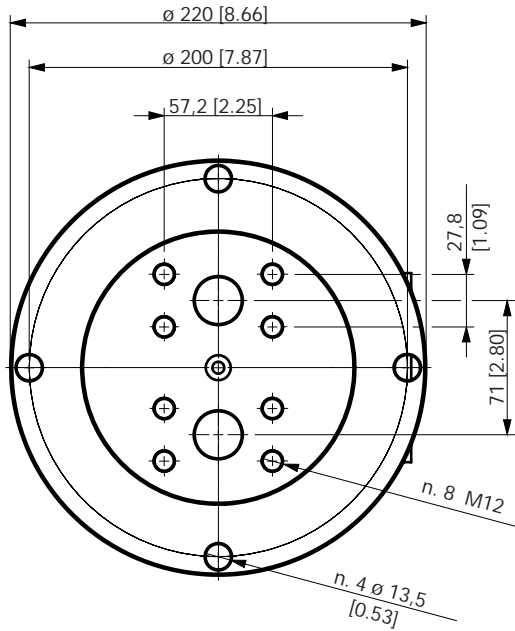


STATOR ROTOR

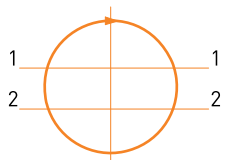


POS	STATOR	ROTOR	DN		WORKING PRESSURE		MAX PRESSURE		FLUID
			mm	inches	bar	PSI	bar	PSI	
1	SAE 1" G 6000 psi	SAE 1" G 6000 psi	24,5	[0.96]	380	5500	420	6100	hydraulic oil
2	SAE 1" G 6000 psi	SAE 1" G 6000 psi	24,5	[0.96]	380	5500	420	6100	hydraulic oil

# SWIVEL JOINT 2 WAYS COD. D105020000

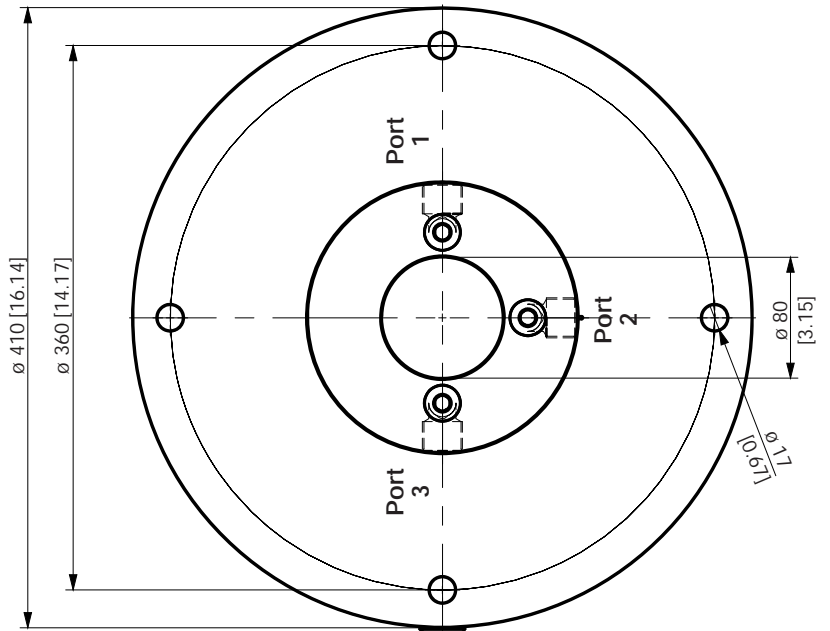
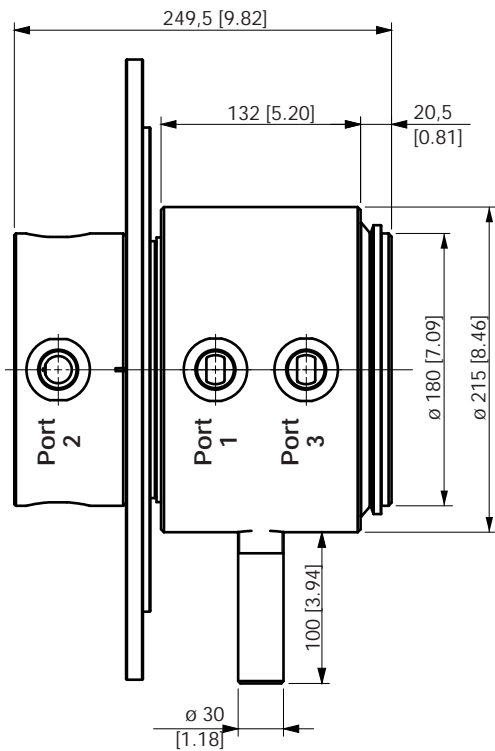
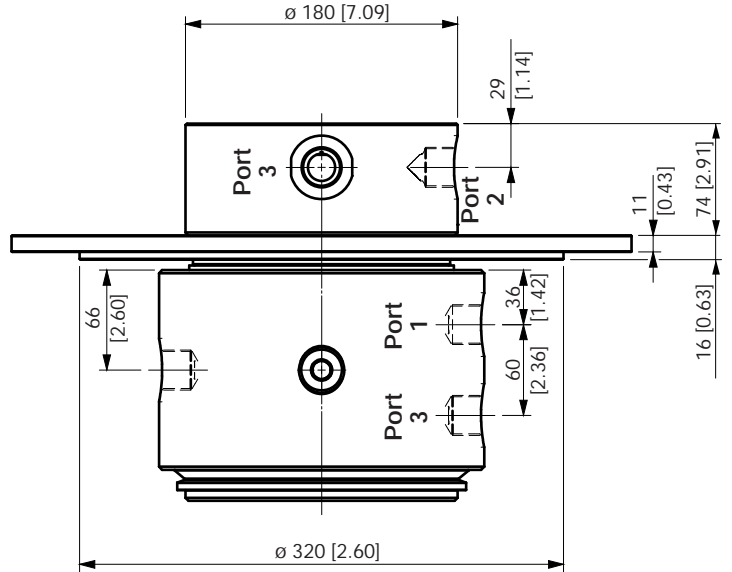
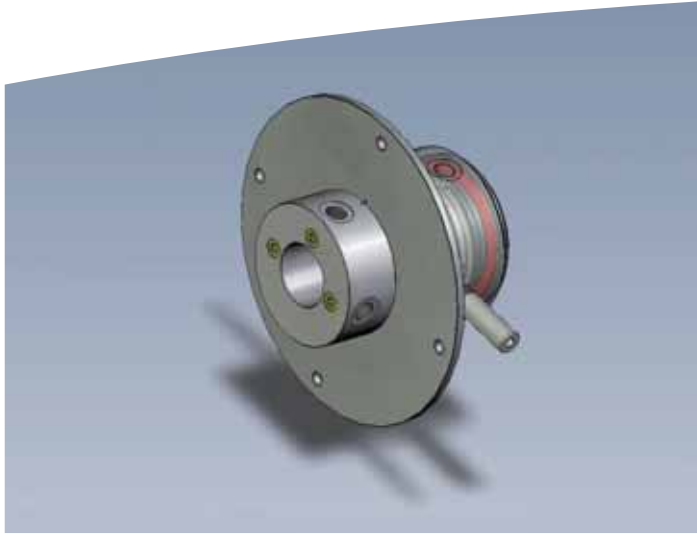


STATOR ROTOR

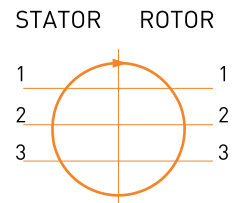


POS	STATOR	ROTOR	DN		WORKING PRESSURE		MAX PRESSURE		FLUID
			mm	inches	bar	PSI	bar	PSI	
1	SAE 1" G 6000 psi	SAE 1" G 6000 psi	24,5	[0.96]	380	5500	420	6100	hydraulic oil
2	SAE 1" G 6000 psi	SAE 1" G 6000 psi	24,5	[0.96]	380	5500	420	6100	hydraulic oil

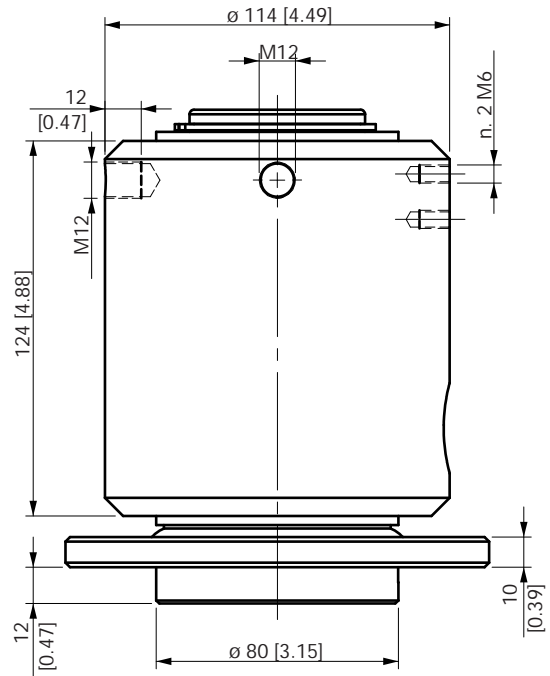
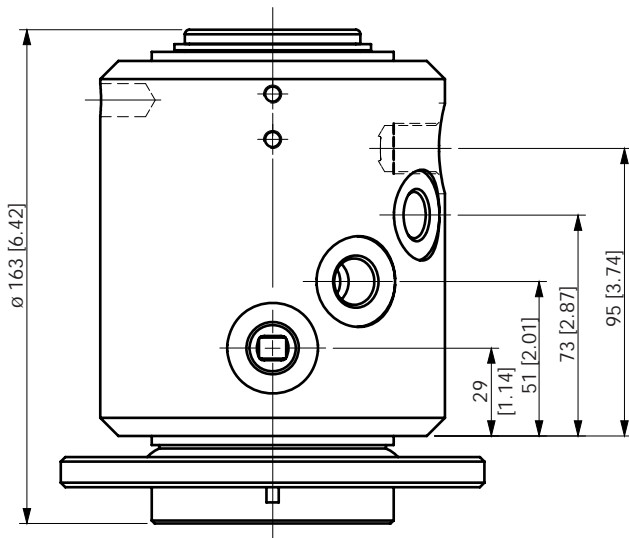
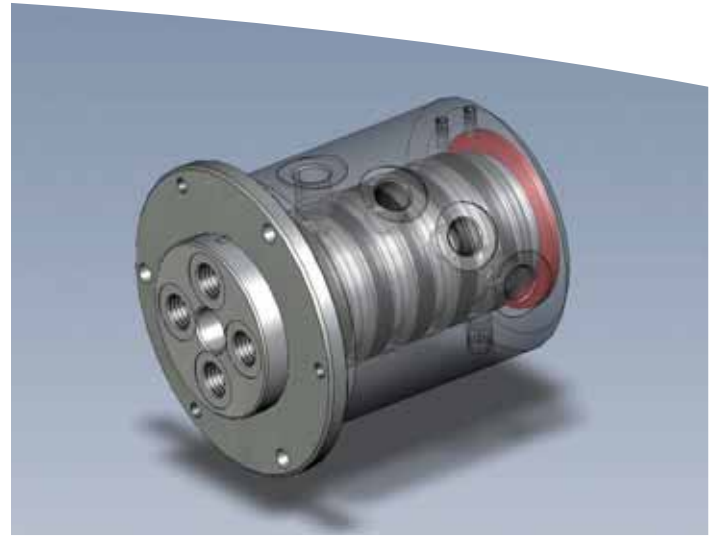
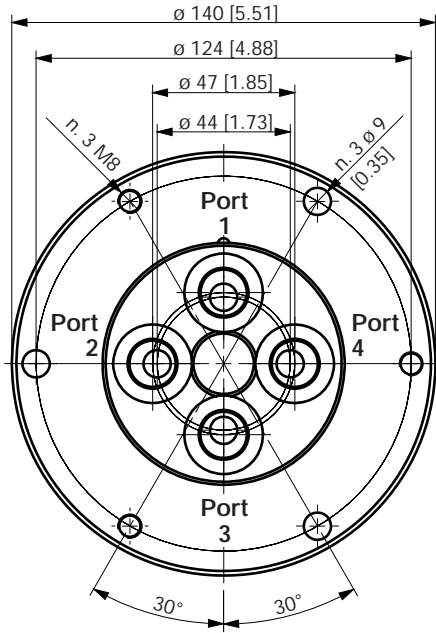
# SWIVEL JOINT 3 WAYS COD. D145030100



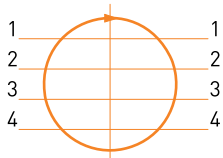
POS	STATOR	ROTOR	DN		WORKING PRESSURE		MAX PRESSURE		FLUID
			mm	inches	bar	PSI	bar	PSI	
1	3/4"G	3/4"G	18,0	[0.71]	380	5500	420	6100	hydraulic oil
2	3/4"G	3/4"G	18,0	[0.71]	380	5500	420	6100	hydraulic oil
3	3/4"G	3/4"G	18,0	[0.71]	380	5500	420	6100	hydraulic oil



# SWIVEL JOINT 4 WAYS COD. D060040000

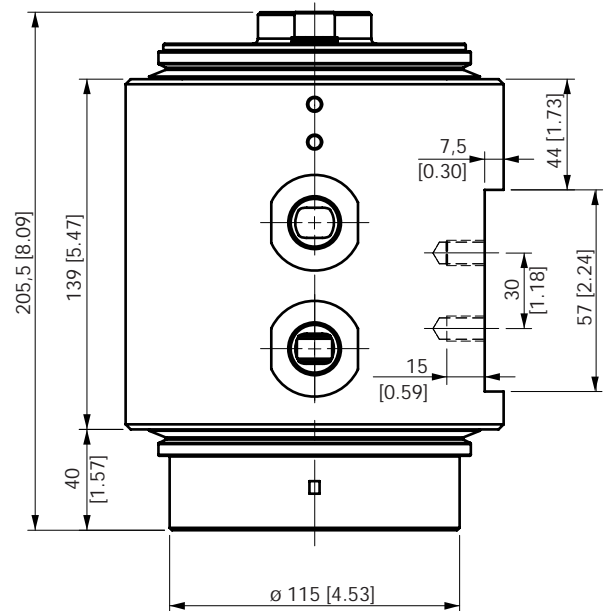
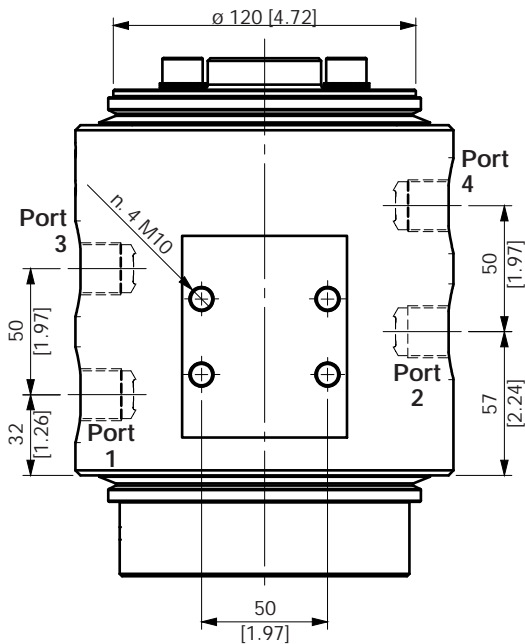
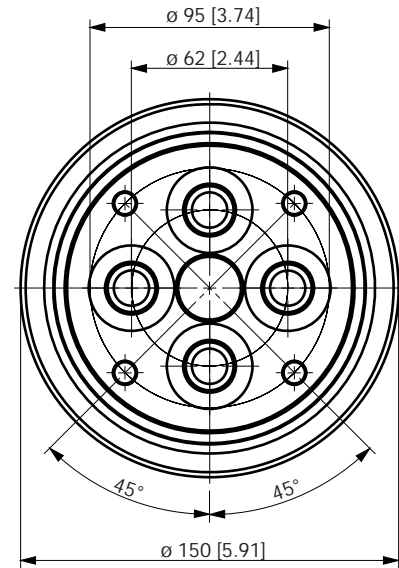


STATOR ROTOR

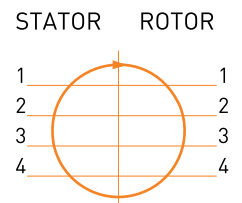


POS	STATOR	ROTOR	DN		WORKING PRESSURE		MAX PRESSURE		FLUID
			mm	inches	bar	PSI	bar	PSI	
1	3/8"G	3/8"G	9,0	[0.35]	380	5500	420	6100	hydraulic oil
2	3/8"G	3/8"G	9,0	[0.35]	380	5500	420	6100	hydraulic oil
3	3/8"G	3/8"G	9,0	[0.35]	380	5500	420	6100	hydraulic oil
4	3/8"G	3/8"G	9,0	[0.35]	380	5500	420	6100	hydraulic oil

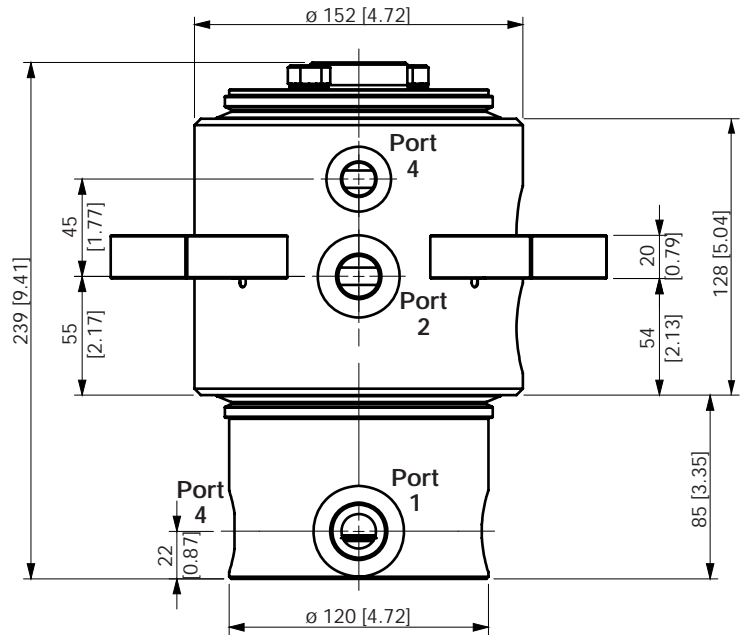
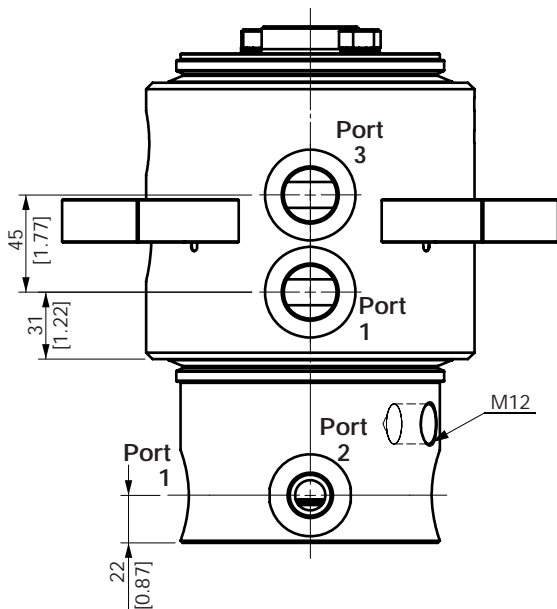
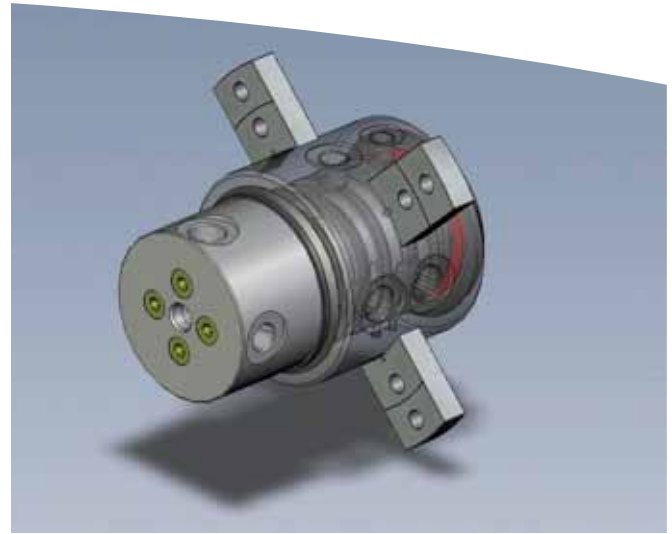
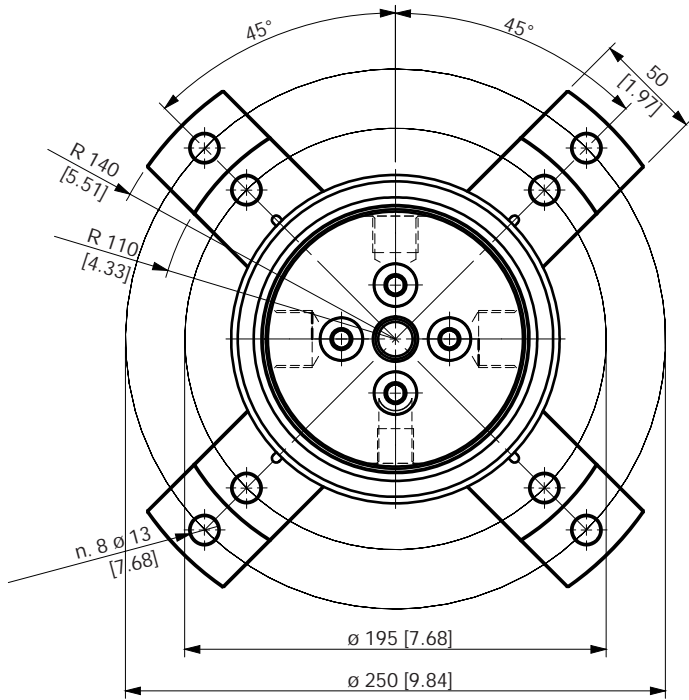
# SWIVEL JOINT 4 WAYS COD. D085040600



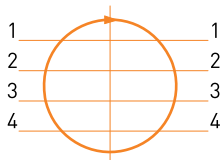
POS	STATOR	ROTOR	DN		WORKING PRESSURE		MAX PRESSURE		FLUID
			mm	inches	bar	PSI	bar	PSI	
1	1/2"G	1/2"G	14,0	[0.55]	380	5500	420	6100	hydraulic oil
2	1/2"G	1/2"G	14,0	[0.55]	380	5500	420	6100	hydraulic oil
3	1/2"G	1/2"G	14,0	[0.55]	380	5500	420	6100	hydraulic oil
4	1/2"G	1/2"G	14,0	[0.55]	380	5500	420	6100	hydraulic oil



# SWIVEL JOINT 4 WAYS COD. D085040400

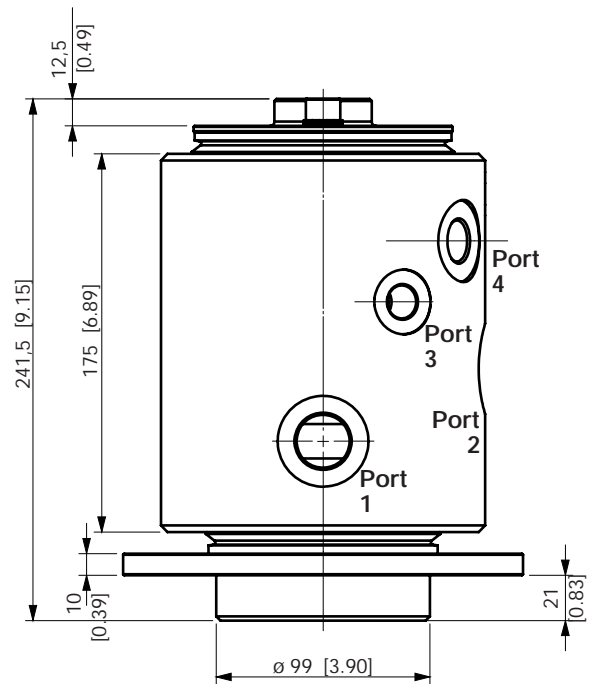
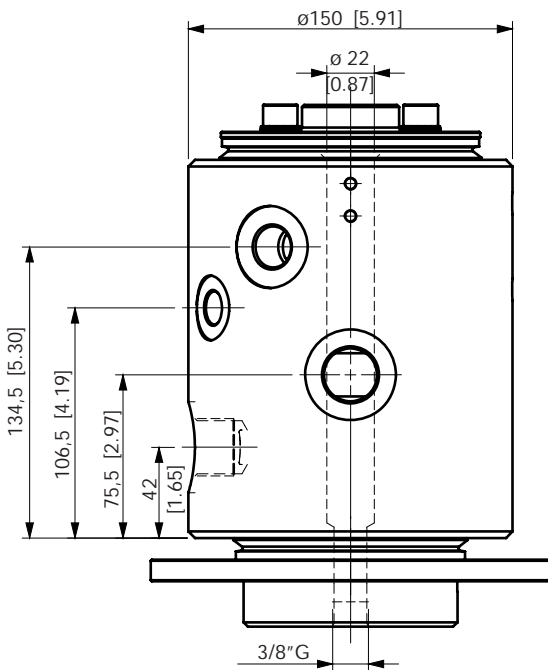
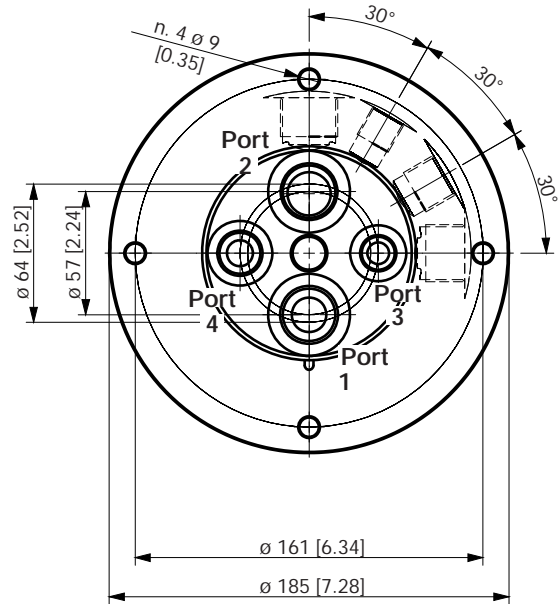
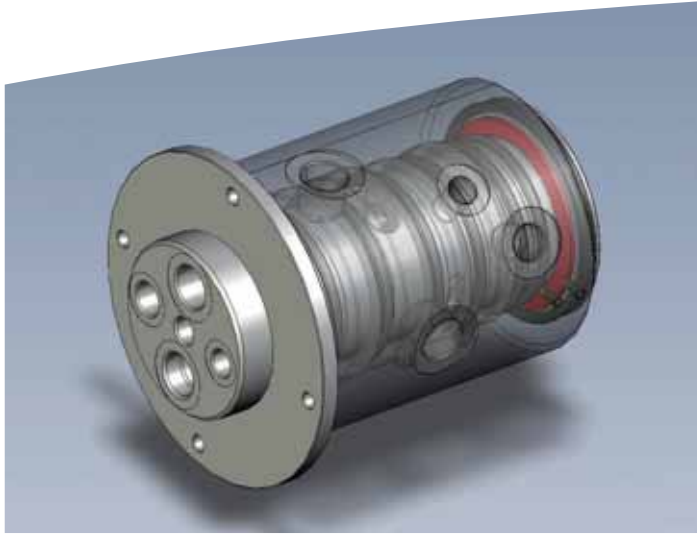


STATOR ROTOR



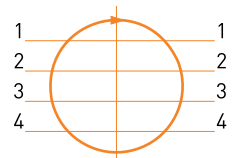
POS	STATOR	ROTOR	DN		WORKING PRESSURE		MAX PRESSURE		FLUID
			mm	inches	bar	PSI	bar	PSI	
1	3/4"G	3/4"G	16,0	[0.63]	380	5500	420	6100	hydraulic oil
2	1/2"G	1/2"G	16,0	[0.63]	380	5500	420	6100	hydraulic oil
3	3/4"G	3/4"G	16,0	[0.63]	380	5500	420	6100	hydraulic oil
4	3/8"G	3/8"G	16,0	[0.63]	380	5500	420	6100	hydraulic oil

# SWIVEL JOINT 4 WAYS COD. D085040200

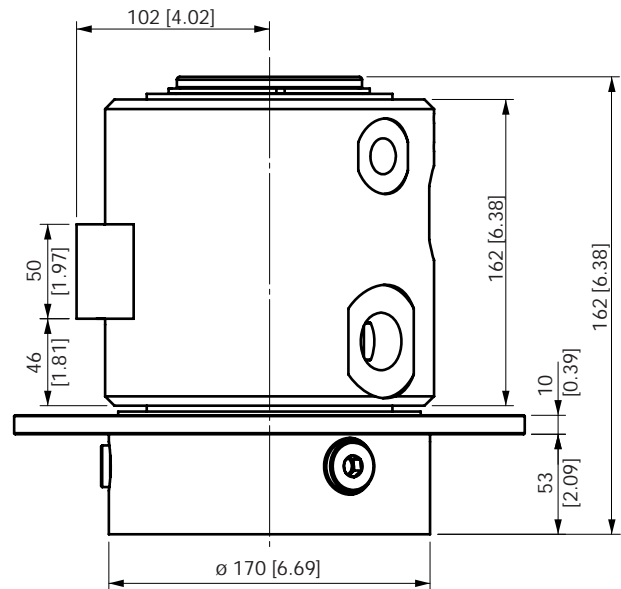
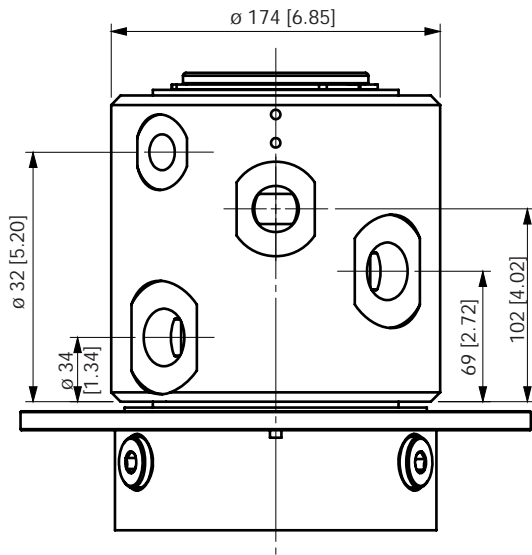
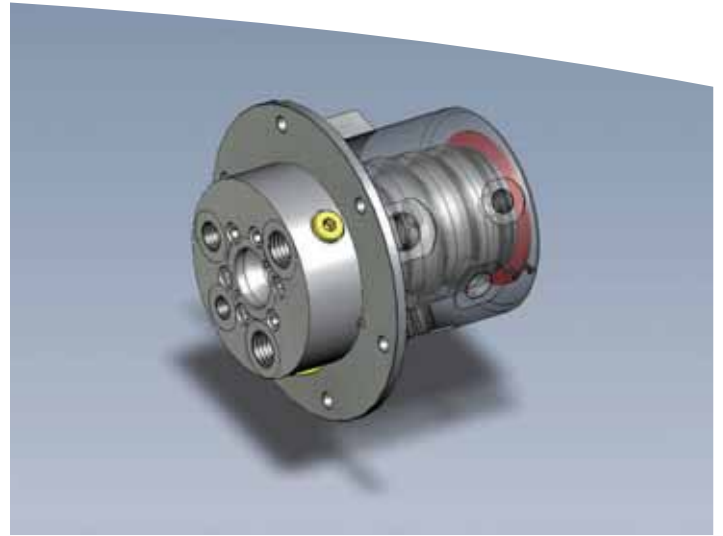
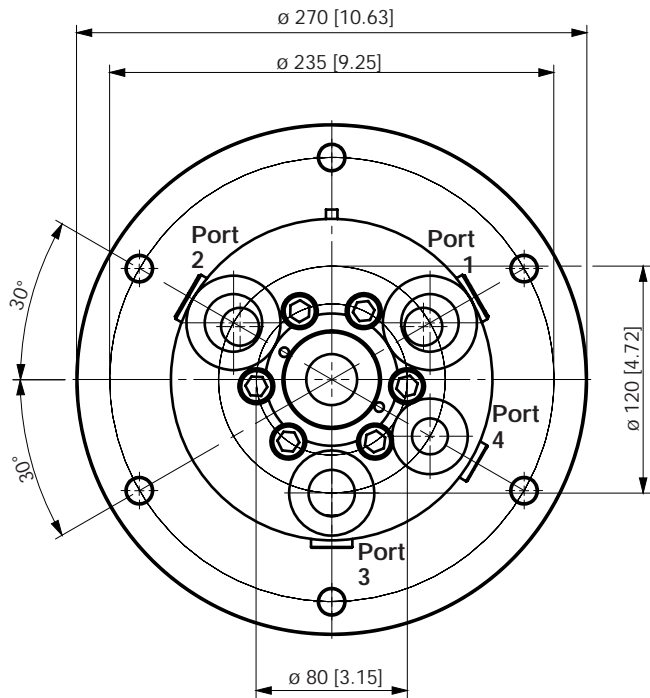


POS	STATOR	ROTOR	DN		WORKING PRESSURE		MAX PRESSURE		FLUID
			mm	inches	bar	PSI	bar	PSI	
1	3/4"G	3/4"G	16,0	[0.63]	380	5500	420	6100	hydraulic oil
2	3/4"G	3/4"G	20,0	[0.79]	380	5500	420	6100	hydraulic oil
3	3/8"G	3/8"G	10,0	[0.39]	380	5500	420	6100	hydraulic oil
4	1/2"G	1/2"G	12,0	[0.47]	380	5500	420	6100	hydraulic oil

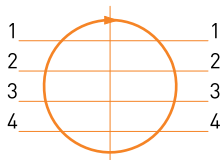
STATOR ROTOR



# SWIVEL JOINT 4 WAYS COD. D100040200

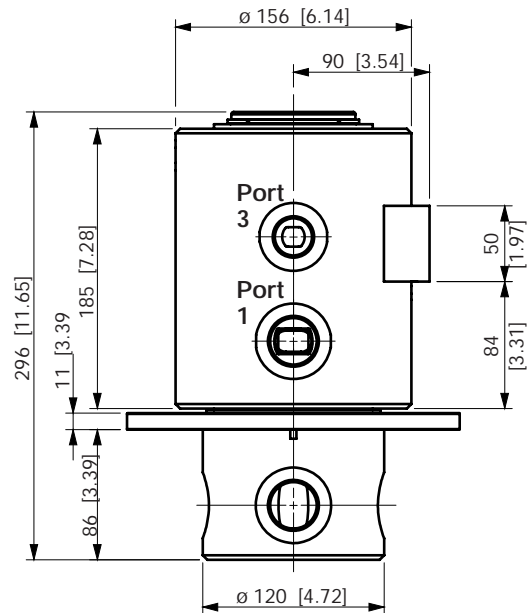
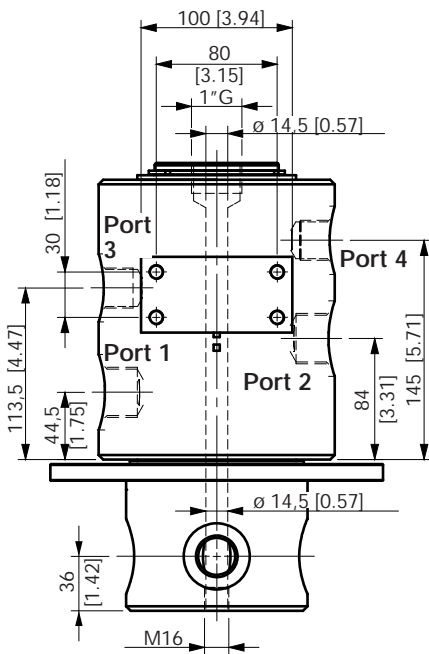
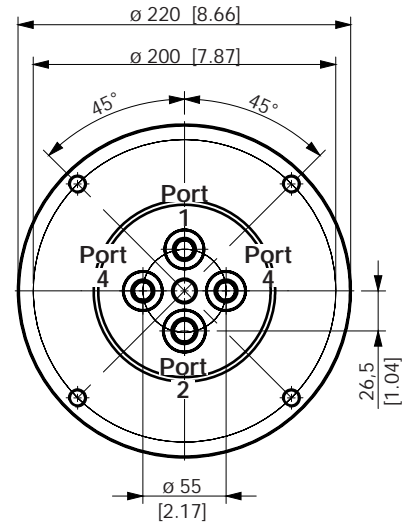
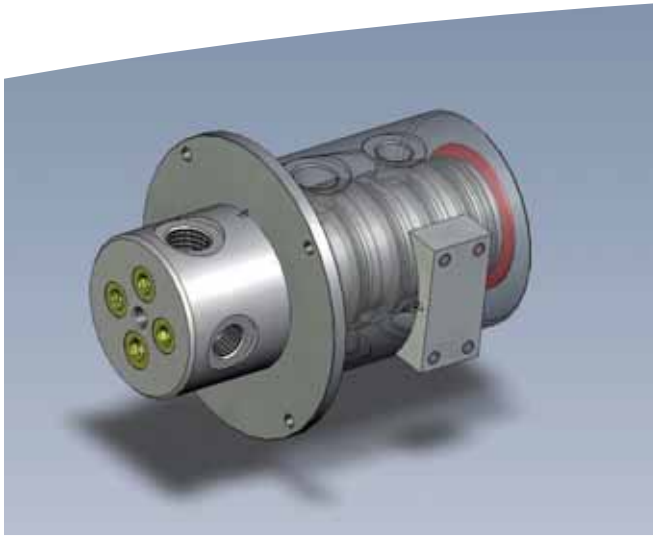


STATOR ROTOR



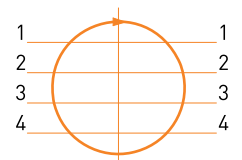
POS	STATOR	ROTOR	DN		WORKING PRESSURE		MAX PRESSURE		FLUID
			mm	inches	bar	PSI	bar	PSI	
1	1"G	1"G	20	[0.79]	380	5500	420	6100	hydraulic oil
2	1"G	1"G	20	[0.79]	380	5500	420	6100	hydraulic oil
3	3/4"G	3/4"G	15	[0.59]	380	5500	420	6100	hydraulic oil
4	1/2"G	1/2"G	12	[0.47]	380	5500	420	6100	hydraulic oil

# SWIVEL JOINT 4 WAYS COD. D085040300

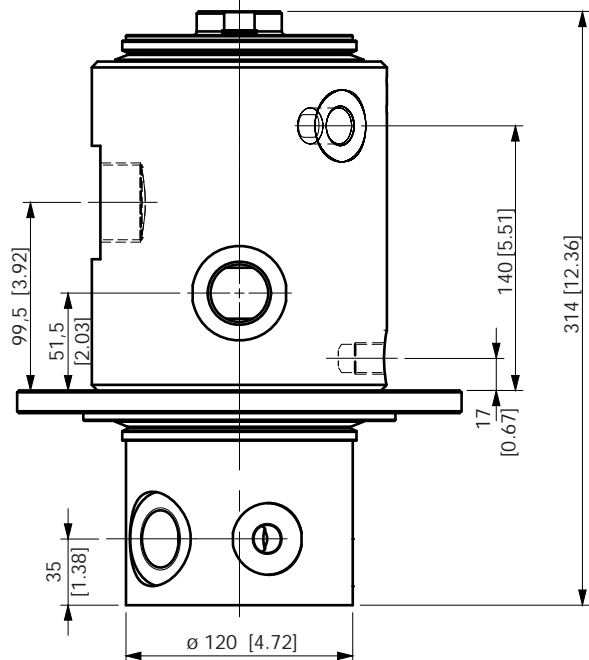
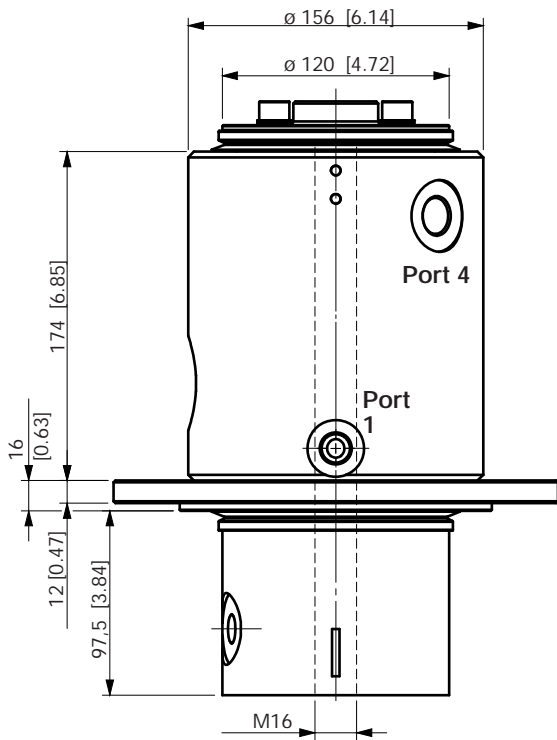
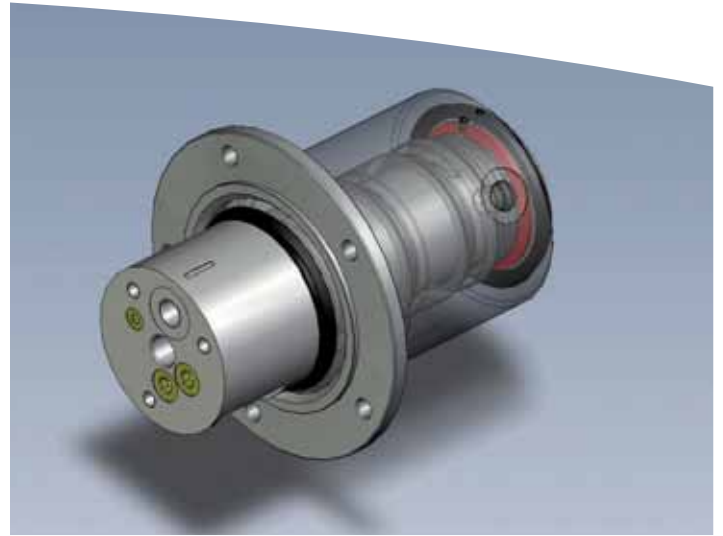
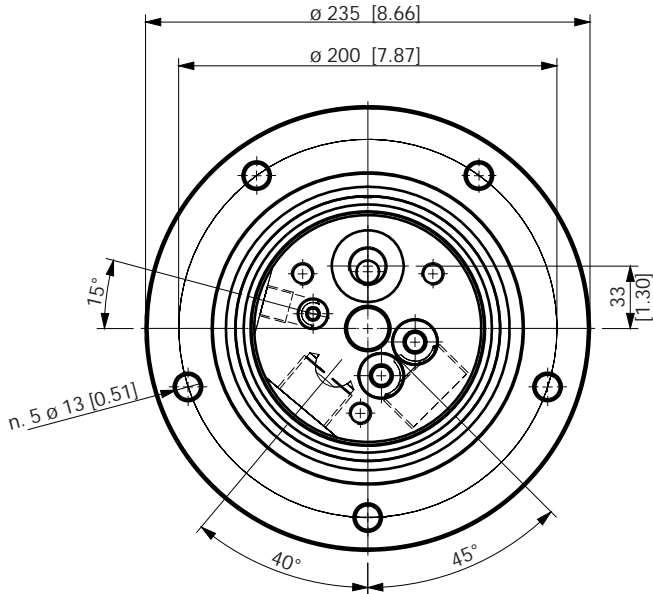


POS	STATOR	ROTOR	DN		WORKING PRESSURE		MAX PRESSURE		FLUID
			mm	inches	bar	PSI	bar	PSI	
1	1"G	1"G	20	[0.79]	380	5500	420	6100	hydraulic oil
2	1"G	1"G	24	[0.94]	380	5500	420	6100	hydraulic oil
3	3/4"G	3/4"G	20	[0.79]	380	5500	420	6100	hydraulic oil
4	3/4"G	3/4"G	20	[0.79]	380	5500	420	6100	hydraulic oil

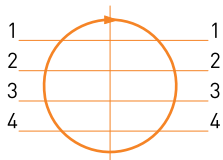
STATOR ROTOR



# SWIVEL JOINT 4 WAYS COD. D085040500



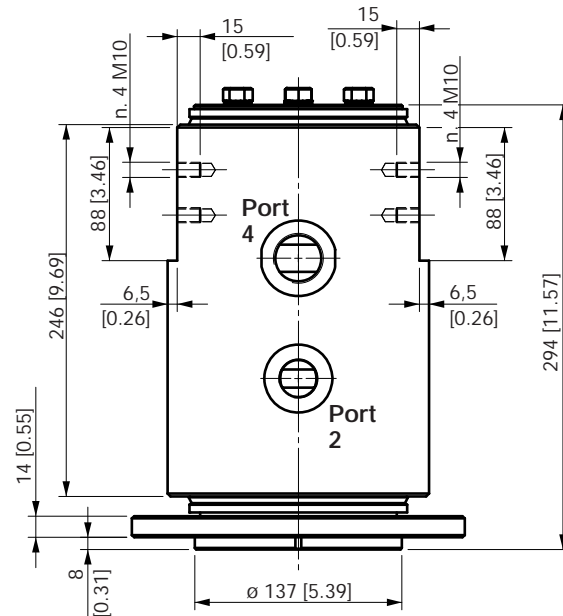
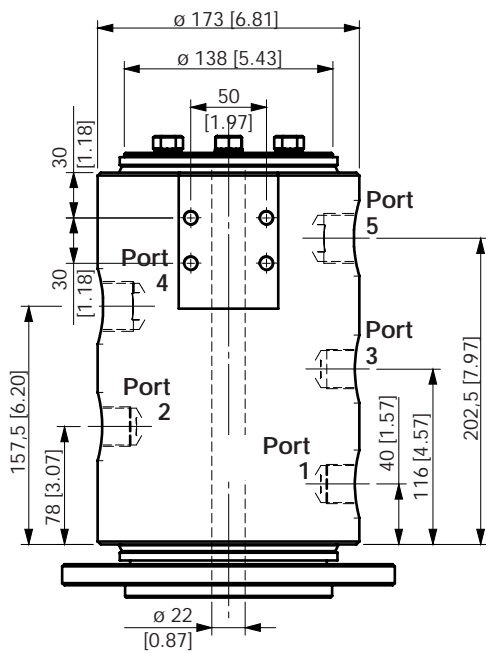
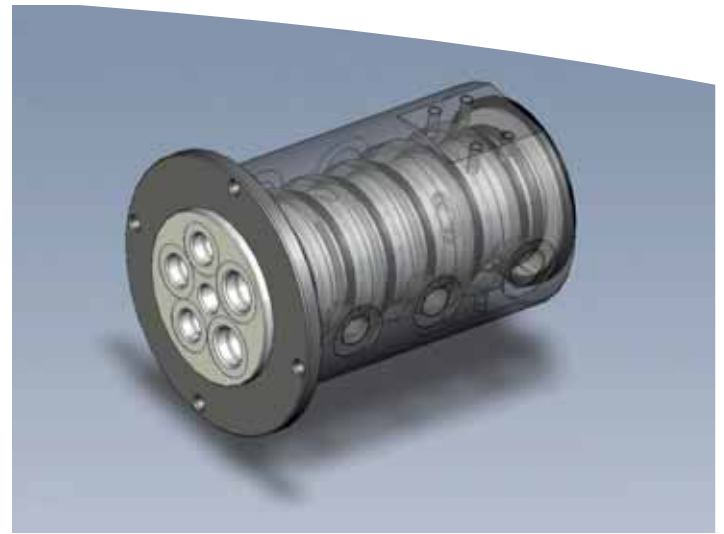
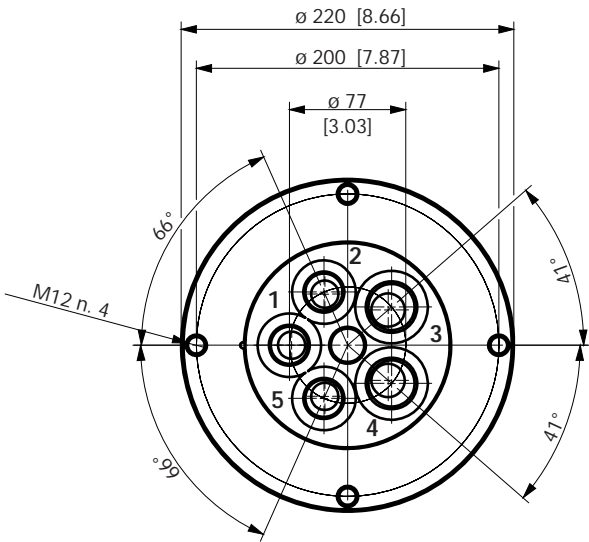
STATOR ROTOR



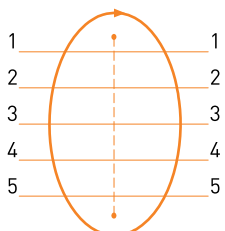
POS	STATOR	ROTOR	DN		WORKING PRESSURE		MAX PRESSURE		FLUID
			mm	inches	bar	PSI	bar	PSI	
1	3/8"G	3/8"G	12	[0.47]	380	5500	420	6100	hydraulic oil
2	1"G	1"G	22	[0.87]	380	5500	420	6100	hydraulic oil
3	3/8"G	3/8"G	n. 2 - 20	[0.79]	380	5500	420	6100	hydraulic oil
4	1/2"G	1/2"G	12	[0.47]	380	5500	420	6100	hydraulic oil



# SWIVEL JOINT 5 WAYS COD. D100050100

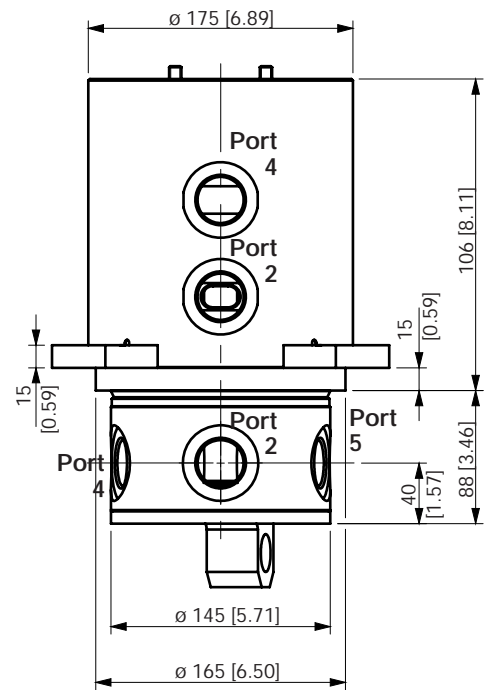
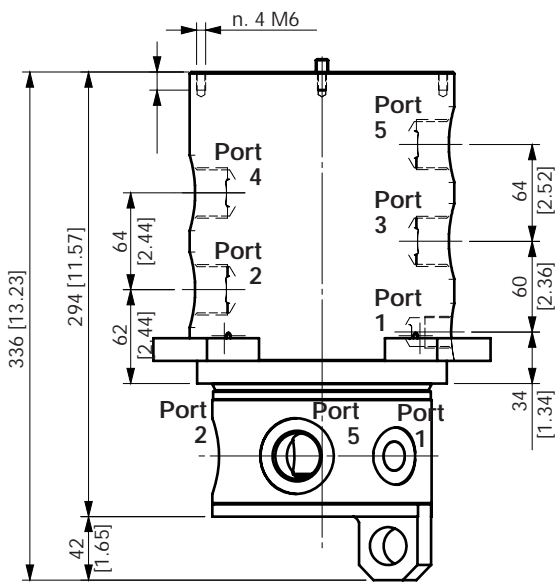
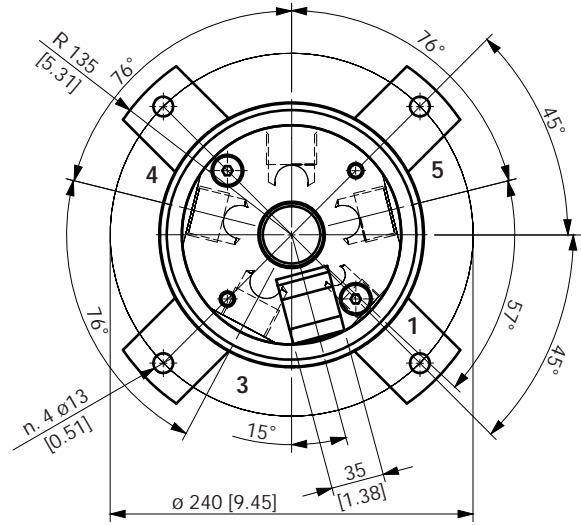
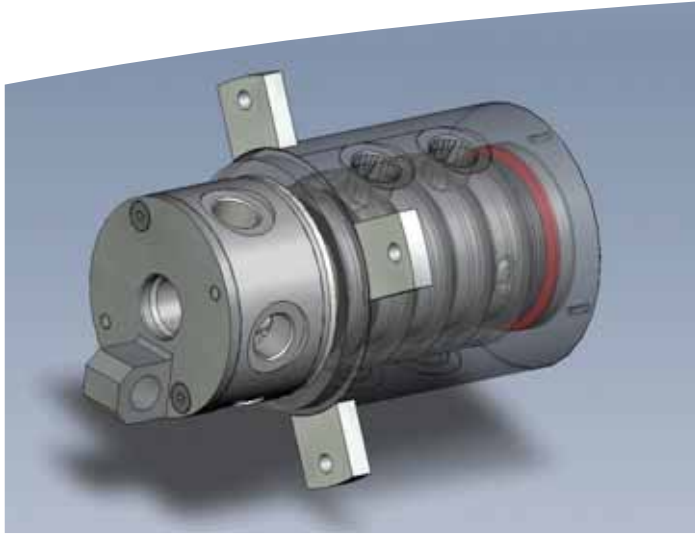


STATOR ROTOR



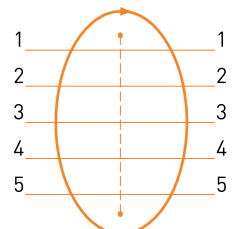
POS	STATOR	ROTOR	DN		WORKING PRESSURE		MAX PRESSURE		FLUID
			mm	inches	bar	PSI	bar	PSI	
1	3/4"G	3/4"G	18,0	[0.71]	380	5500	420	6100	hydraulic oil
2	3/4"G	3/4"G	18,0	[0.71]	380	5500	420	6100	hydraulic oil
3	3/4"G	3/4"G	18,0	[0.71]	380	5500	420	6100	hydraulic oil
4	1"G	1"G	22,0	[0.87]	380	5500	420	6100	hydraulic oil
5	1"G	1"G	22,0	[0.87]	380	5500	420	6100	hydraulic oil

# SWIVEL JOINT 5 WAYS COD. D0100050000

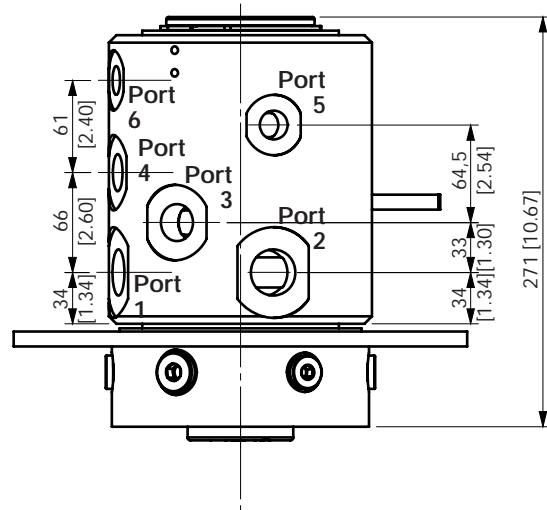
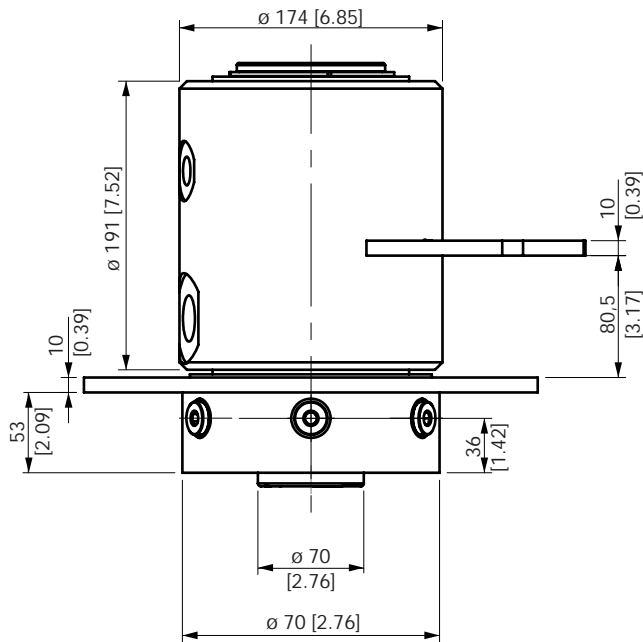
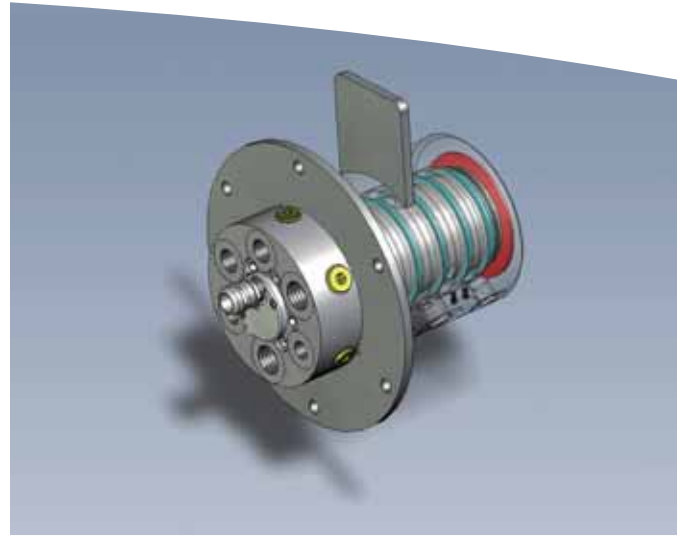
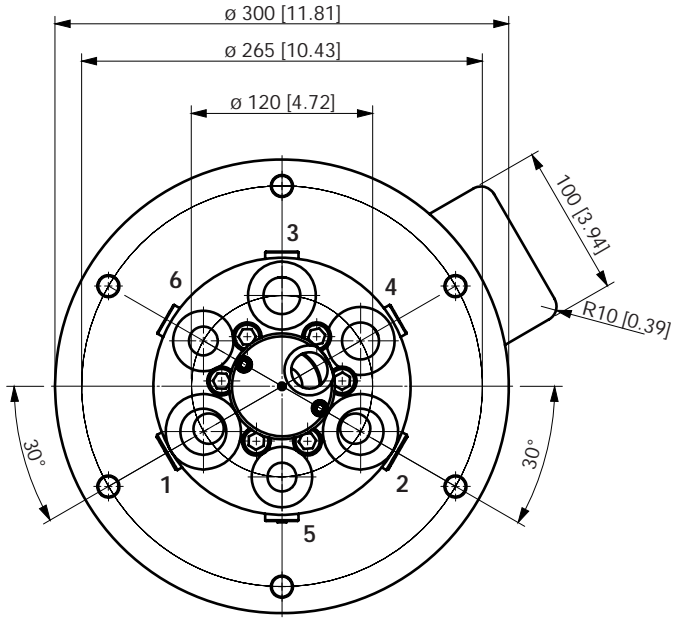


POS	STATOR	ROTOR	DN		WORKING PRESSURE		MAX PRESSURE		FLUID
			mm	inches	bar	PSI	bar	PSI	
1	1/2"G	1/2"G	14	[0.55]	380	5500	420	6100	hydraulic oil
2	1"G	1"G	22	[0.87]	380	5500	420	6100	hydraulic oil
3	1"G	1"G	22	[0.87]	380	5500	420	6100	hydraulic oil
4	1"G	1"G	22	[0.87]	380	5500	420	6100	hydraulic oil
5	1"G	1"G	22	[0.87]	380	5500	420	6100	hydraulic oil

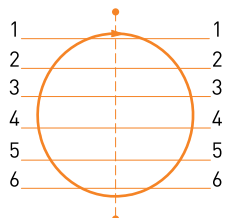
STATOR ROTOR



# SWIVEL JOINT 6 WAYS COD. D100060000

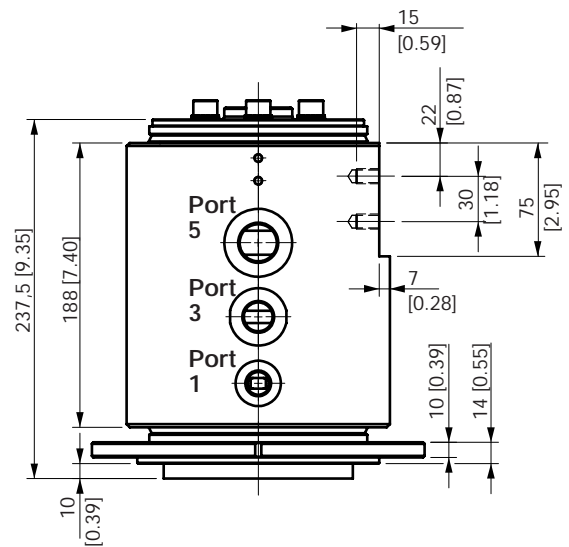
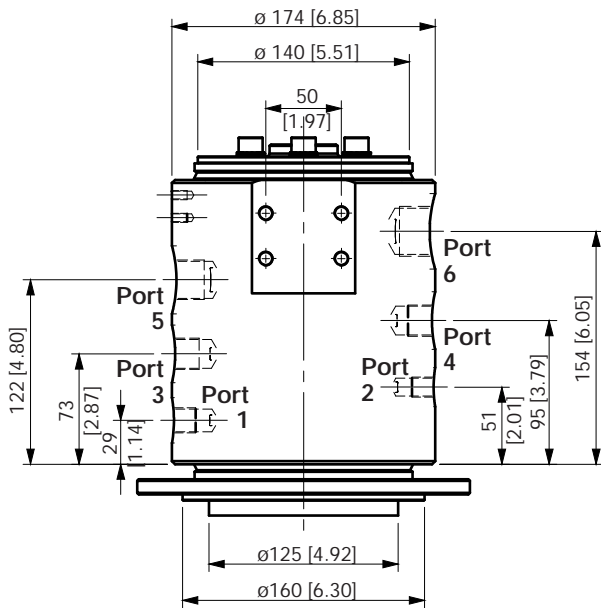
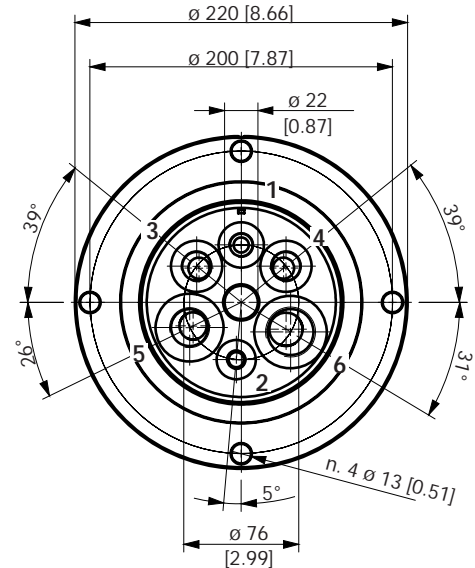
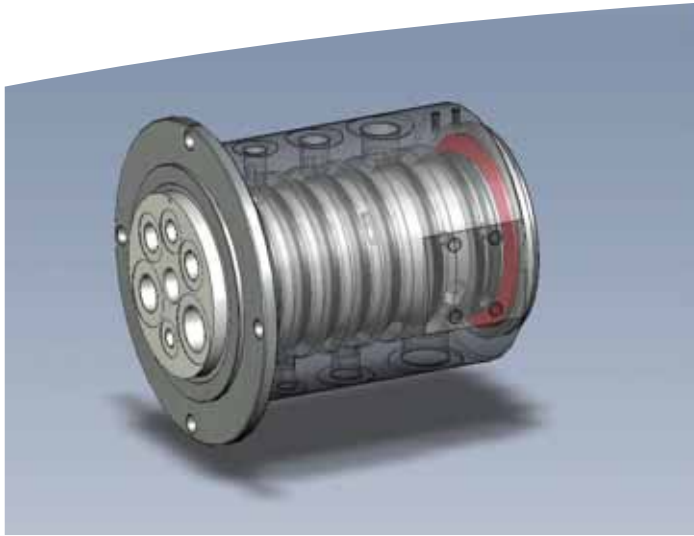


STATOR ROTOR



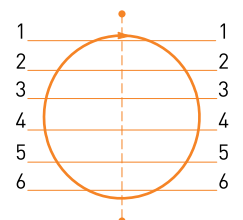
POS	STATOR	ROTOR	DN		WORKING PRESSURE		MAX PRESSURE		FLUID
			mm	inches	bar	PSI	bar	PSI	
1	1"G	1"G	20	[0.79]	380	5500	420	6100	hydraulic oil
2	1"G	1"G	20	[0.79]	380	5500	420	6100	hydraulic oil
3	3/4"G	3/4"G	15	[0.59]	380	5500	420	6100	hydraulic oil
4	3/4"G	3/4"G	15	[0.59]	380	5500	420	6100	hydraulic oil
5	1/2"G	1/2"G	12	[0.47]	380	5500	420	6100	hydraulic oil
6	1/2"G	1/2"G	12	[0.47]	380	5500	420	6100	hydraulic oil

# SWIVEL JOINT 6 WAYS COD. D0100060100

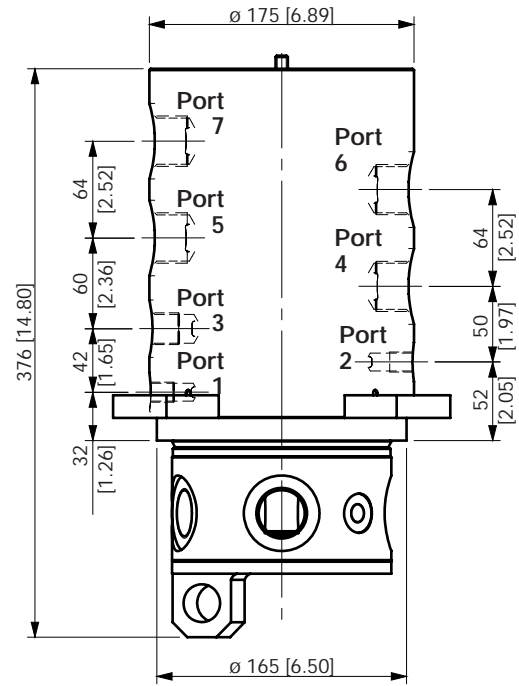
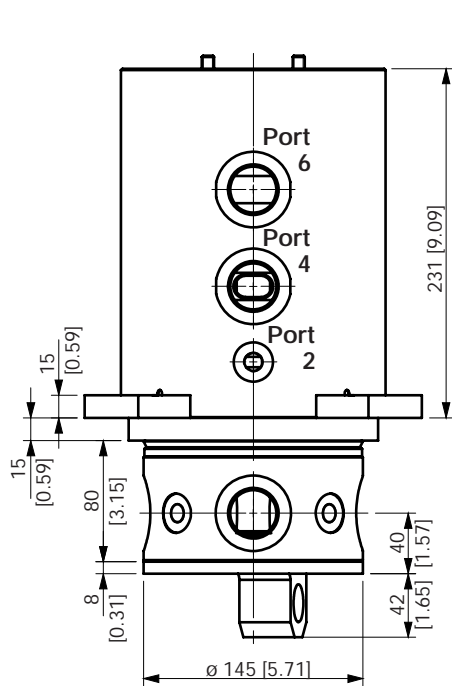
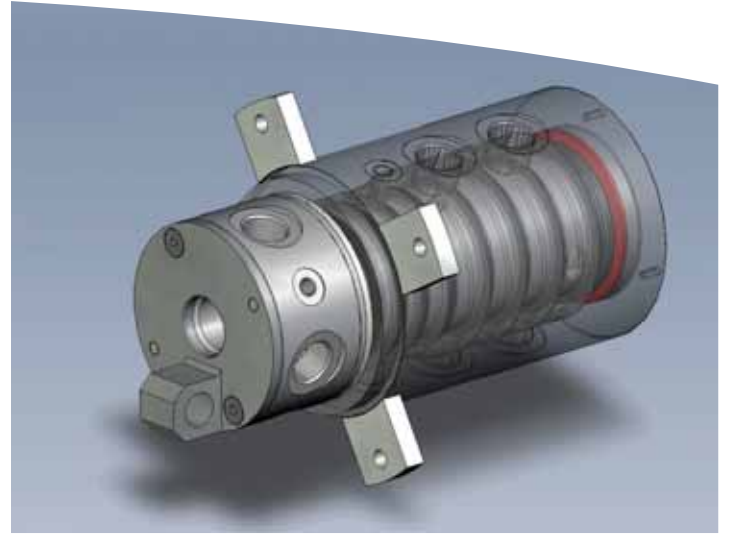
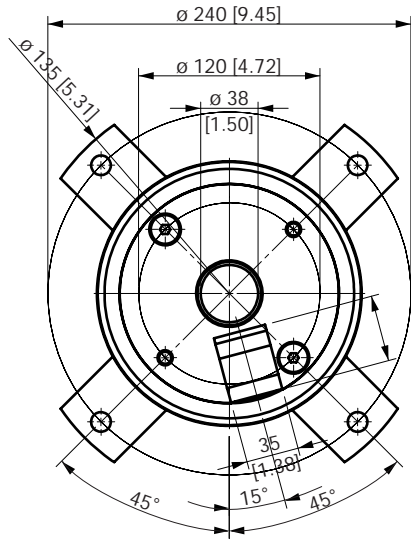


POS	STATOR	ROTOR	DN		WORKING PRESSURE		MAX PRESSURE		FLUID
			mm	inches	bar	PSI	bar	PSI	
1	3/8"G	3/8"G	10	[0.39]	380	5500	420	6100	hydraulic oil
2	1/4"G	1/4"G	10	[0.39]	380	5500	420	6100	hydraulic oil
3	1/2"G	1/2"G	14	[0.55]	380	5500	420	6100	hydraulic oil
4	1/2"G	1/2"G	14	[0.55]	380	5500	420	6100	hydraulic oil
5	3/4"G	3/4"G	18	[0.71]	380	5500	420	6100	hydraulic oil
6	1"G	1"G	22	[0.87]	380	5500	420	6100	hydraulic oil

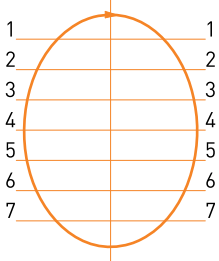
STATOR ROTOR



# SWIVEL JOINT 7 WAYS COD. D100070000

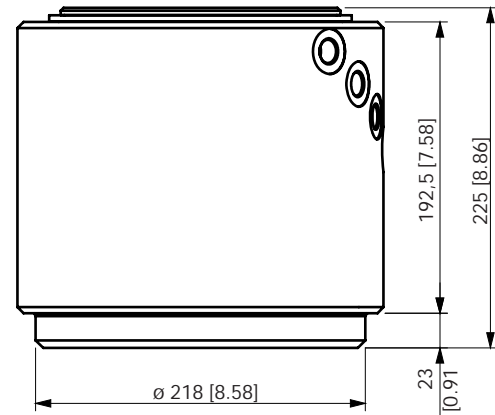
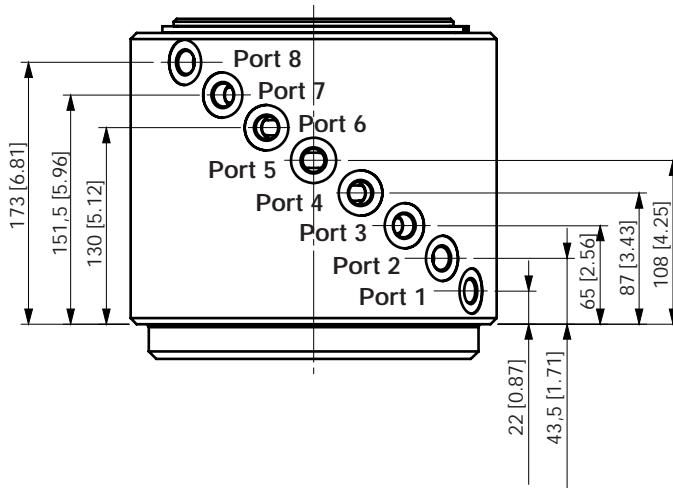
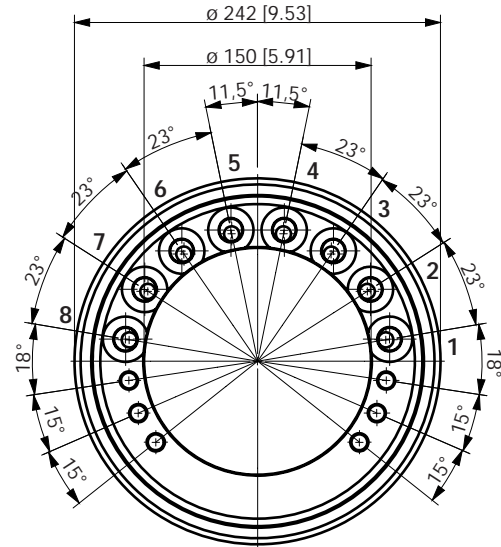
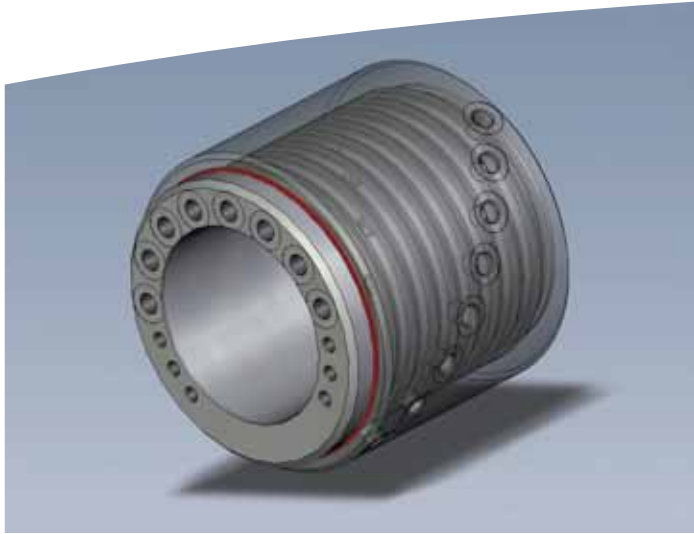


STATOR ROTOR



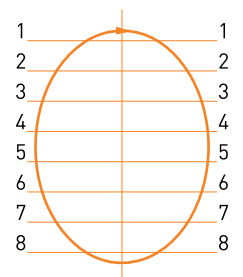
POS	STATOR	ROTOR	DN		WORKING PRESSURE		MAX PRESSURE		FLUID
			mm	inches	bar	PSI	bar	PSI	
1	1/4"G	1/4"G	8	[0.31]	380	5500	420	6100	hydraulic oil
2	1/4"G	1/4"G	8	[0.31]	380	5500	420	6100	hydraulic oil
3	1/2"G	1/2"G	14	[0.55]	380	5500	420	6100	hydraulic oil
4	1"G	1"G	22	[0.87]	380	5500	420	6100	hydraulic oil
5	1"G	1"G	22	[0.87]	380	5500	420	6100	hydraulic oil
6	1"G	1"G	22	[0.87]	380	5500	420	6100	hydraulic oil
7	1"G	1"G	22	[0.87]	380	5500	420	6100	hydraulic oil

# SWIVEL JOINT 8 WAYS COD. D0100080000

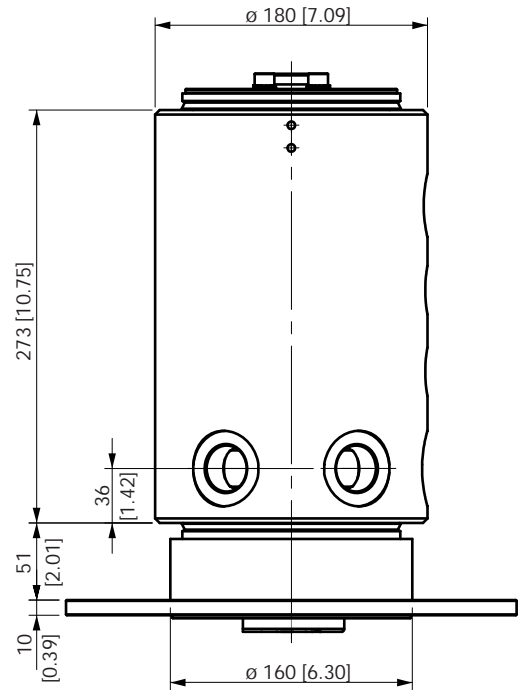
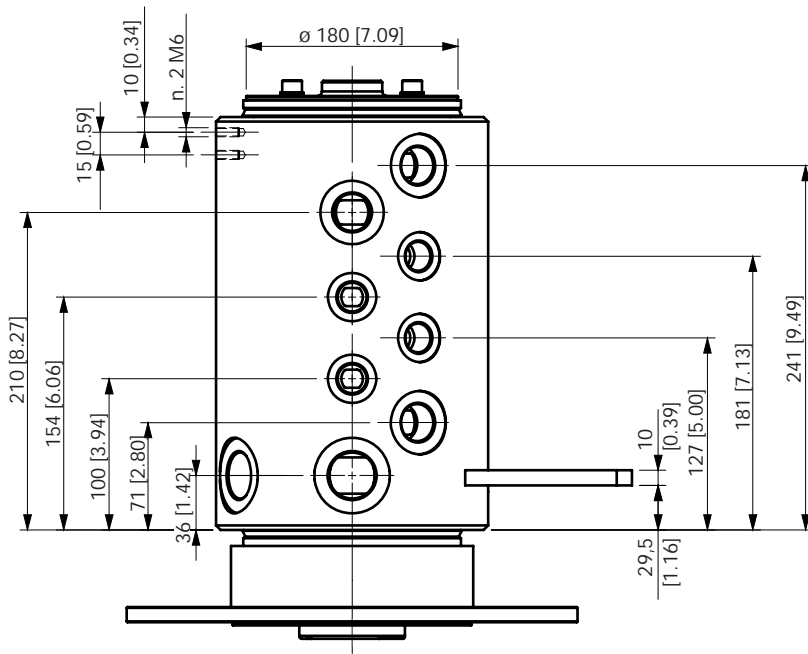
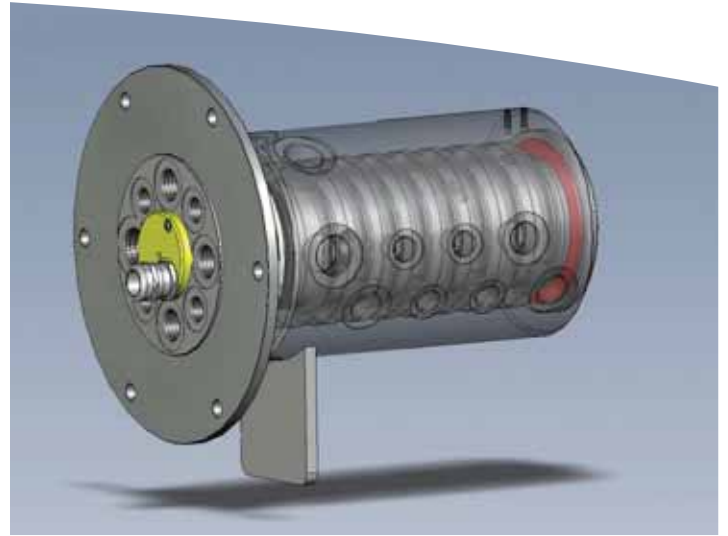
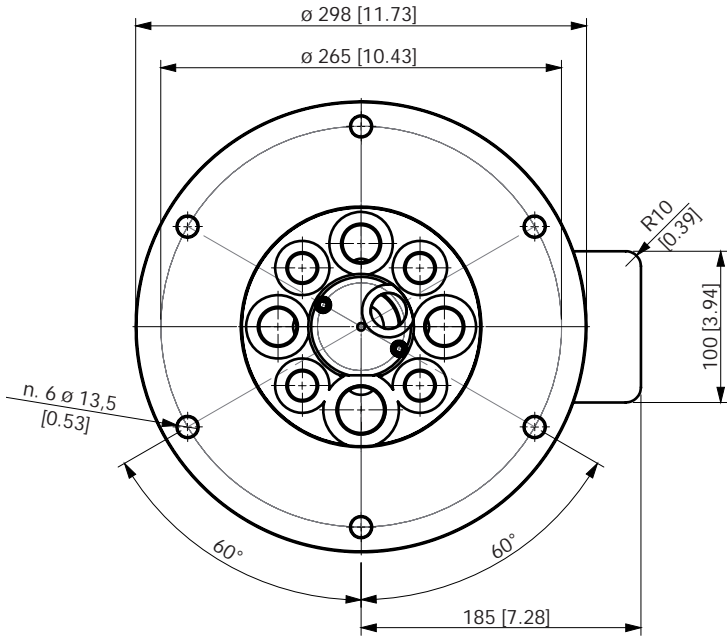


POS	STATOR	ROTOR	DN		WORKING PRESSURE		MAX PRESSURE		FLUID
			mm	inches	bar	PSI	bar	PSI	
1	3/8"G	3/8"G	16	[0.63]	380	5500	420	6100	hydraulic oil
2	3/8"G	3/8"G	16	[0.63]	380	5500	420	6100	hydraulic oil
3	3/8"G	3/8"G	16	[0.63]	380	5500	420	6100	hydraulic oil
4	3/8"G	3/8"G	16	[0.63]	380	5500	420	6100	hydraulic oil
5	3/8"G	3/8"G	12	[0.47]	380	5500	420	6100	hydraulic oil
6	3/8"G	3/8"G	12	[0.47]	380	5500	420	6100	hydraulic oil
7	3/8"G	3/8"G	12	[0.47]	380	5500	420	6100	hydraulic oil
8	3/8"G	3/8"G	12	[0.47]	380	5500	420	6100	hydraulic oil

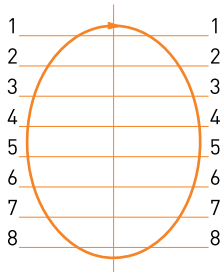
STATOR ROTOR



# SWIVEL JOINT 8 WAYS COD. D100080100

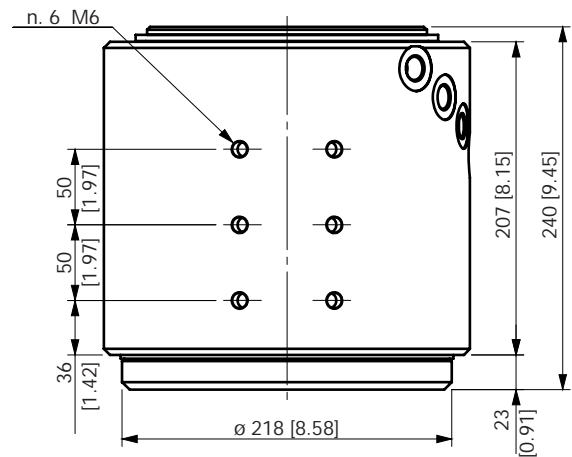
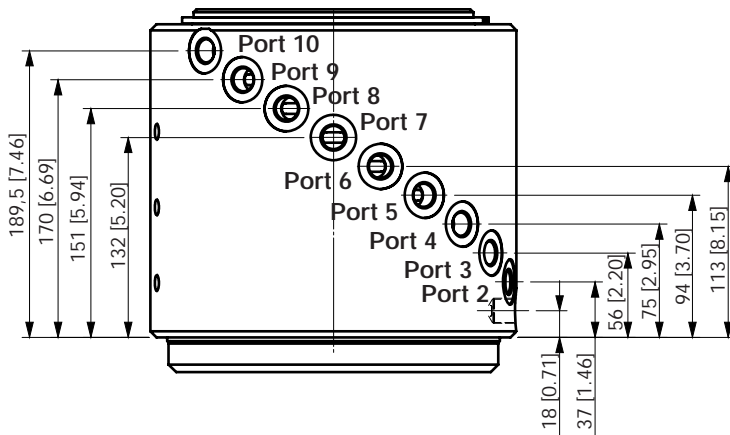
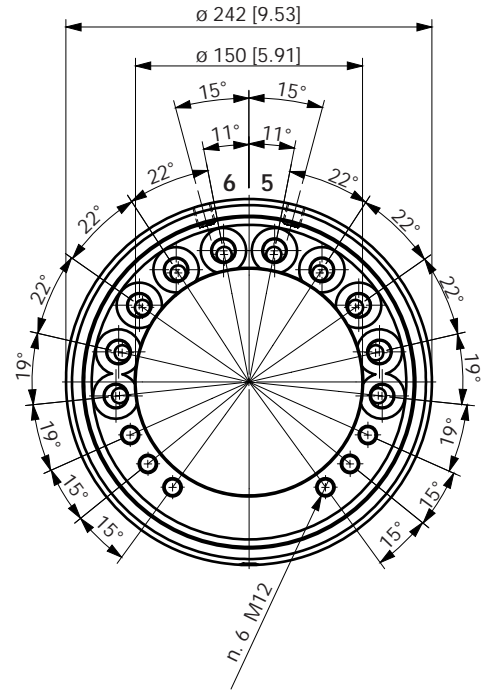
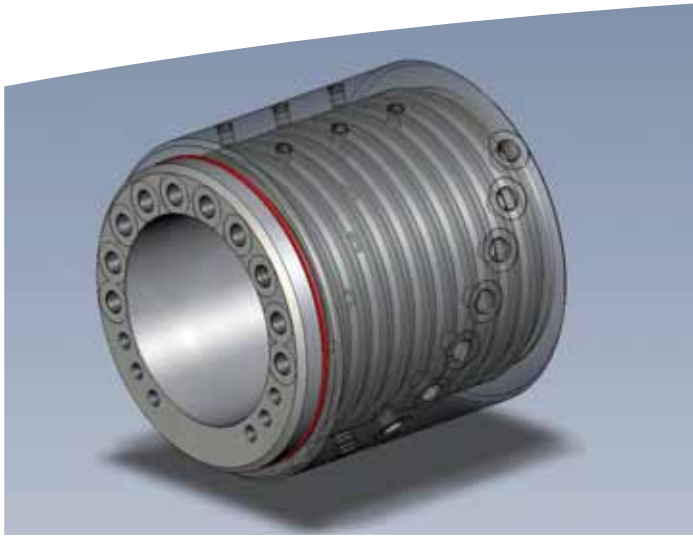


STATOR ROTOR

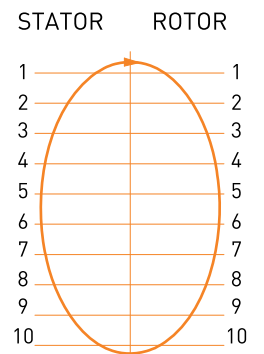


POS	STATOR	ROTOR	DN		WORKING PRESSURE		MAX PRESSURE		FLUID
			mm	inches	bar	PSI	bar	PSI	
1	1"G	1"G	24	[0.94]	380	5500	420	6100	hydraulic oil
2	3/4"G	3/4"G	20	[0.79]	380	5500	420	6100	hydraulic oil
3	1/2"G	1/2"G	16	[0.63]	380	5500	420	6100	hydraulic oil
4	1/2"G	1/2"G	16	[0.63]	380	5500	420	6100	hydraulic oil
5	1/2"G	1/2"G	16	[0.63]	380	5500	420	6100	hydraulic oil
6	1/2"G	1/2"G	16	[0.63]	380	5500	420	6100	hydraulic oil
7	3/4"G	3/4"G	20	[0.79]	380	5500	420	6100	hydraulic oil
8	3/4"G	3/4"G	20	[0.79]	380	5500	420	6100	hydraulic oil

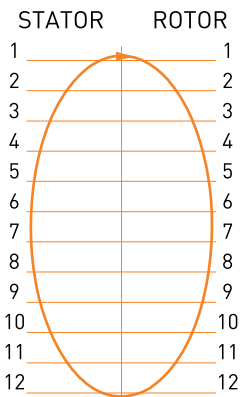
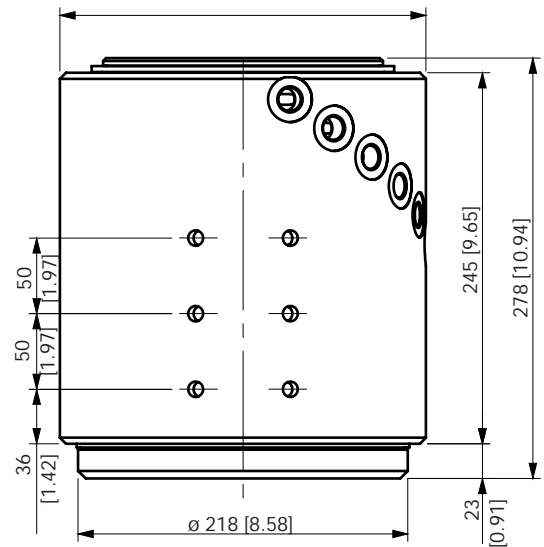
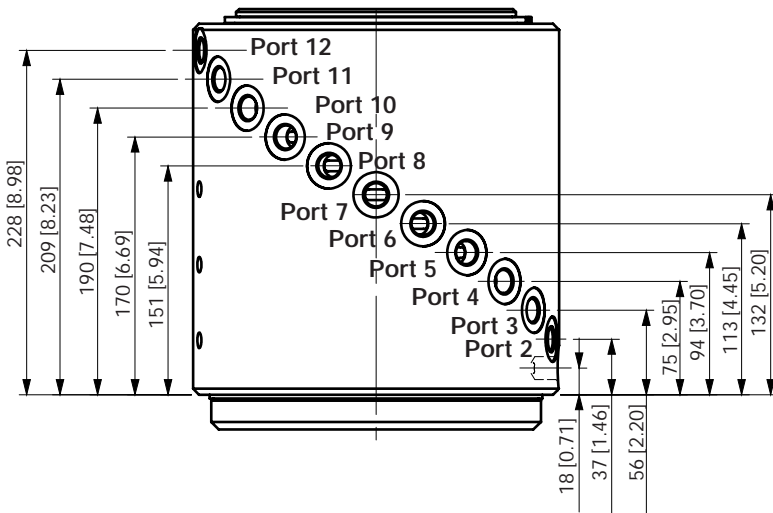
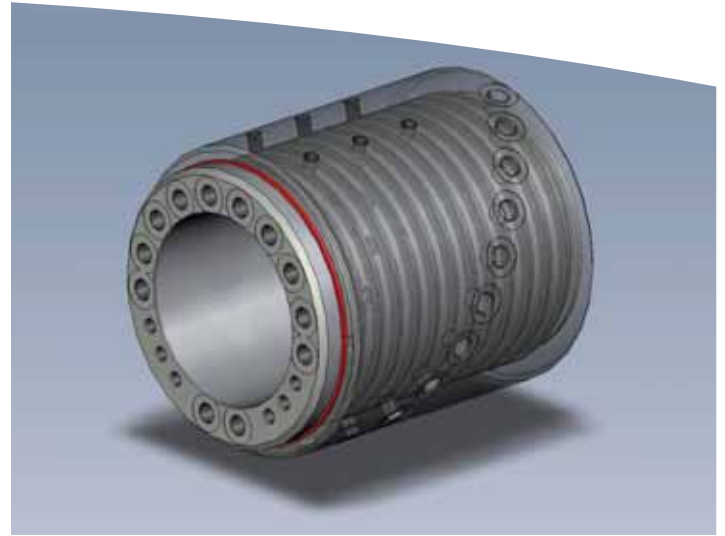
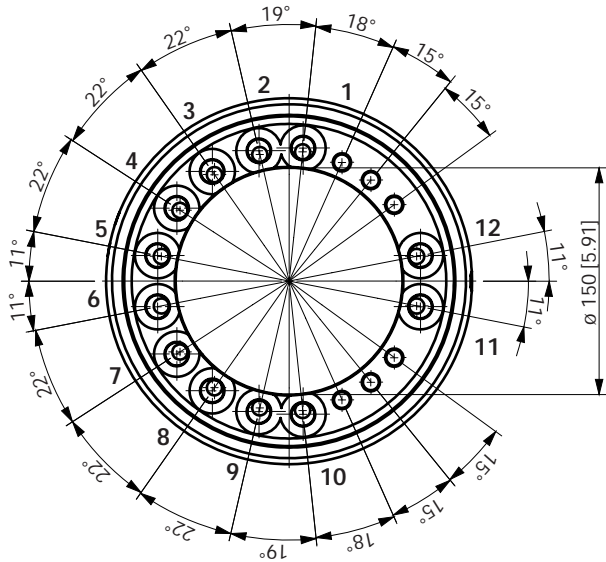
# SWIVEL JOINT 10 WAYS COD. D0190100000



POS	STATOR	ROTOR	DN		WORKING PRESSURE		MAX PRESSURE		FLUID
			mm	inches	bar	PSI	bar	PSI	
1	3/8"G	3/8"G	16	[0.63]	380	5500	420	6100	hydraulic oil
2	3/8"G	3/8"G	16	[0.63]	380	5500	420	6100	hydraulic oil
3	3/8"G	3/8"G	16	[0.63]	380	5500	420	6100	hydraulic oil
4	3/8"G	3/8"G	16	[0.63]	380	5500	420	6100	hydraulic oil
5	3/8"G	3/8"G	12	[0.47]	380	5500	420	6100	hydraulic oil
6	3/8"G	3/8"G	12	[0.47]	380	5500	420	6100	hydraulic oil
7	3/8"G	3/8"G	12	[0.47]	380	5500	420	6100	hydraulic oil
8	3/8"G	3/8"G	12	[0.47]	380	5500	420	6100	hydraulic oil
9	3/8"G	3/8"G	12	[0.47]	380	5500	420	6100	hydraulic oil
10	3/8"G	3/8"G	12	[0.47]	380	5500	420	6100	hydraulic oil

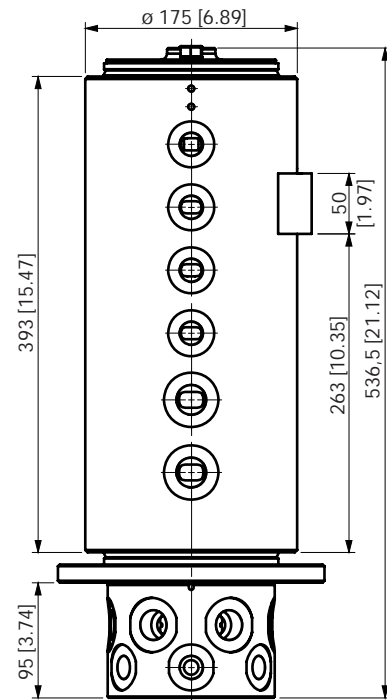
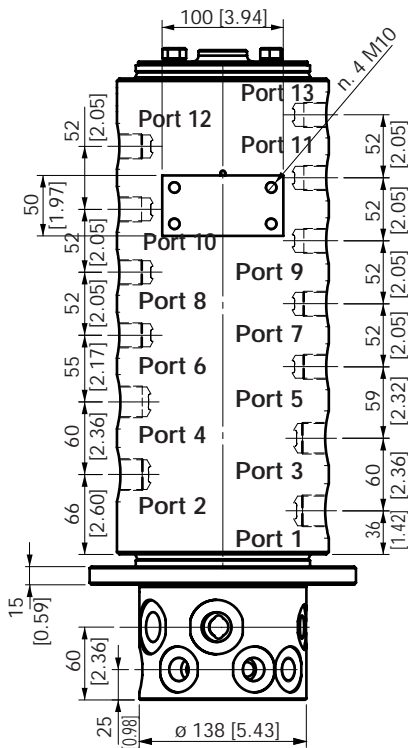
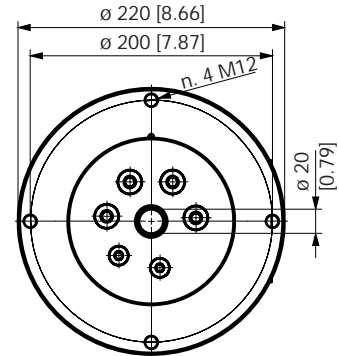
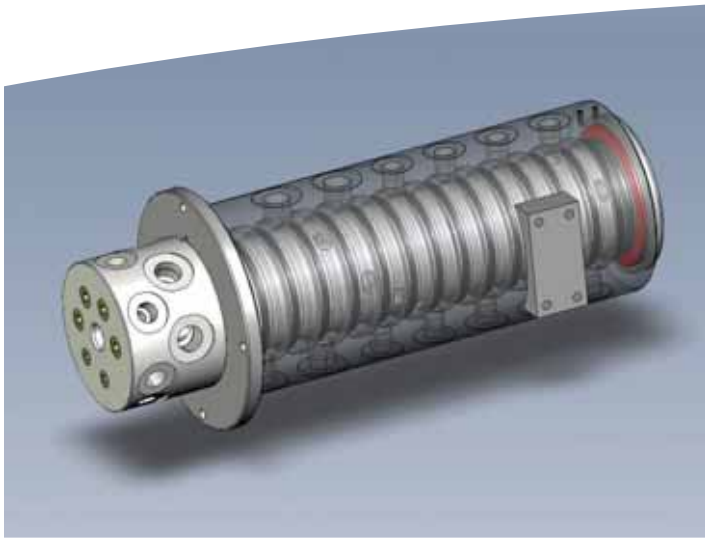


# SWIVEL JOINT 12 WAYS COD. D0190120000

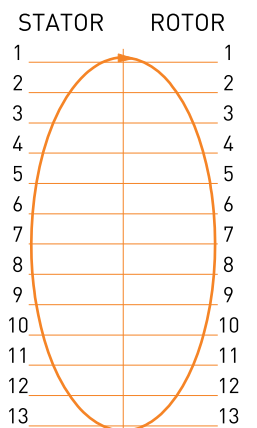


POS	STATOR	ROTOR	DN		WORKING PRESSURE		MAX PRESSURE		FLUID
			mm	inches	bar	PSI	bar	PSI	
1	3/8"G	3/8"G	16	[0.63]	380	5500	420	6100	hydraulic oil
2	3/8"G	3/8"G	16	[0.63]	380	5500	420	6100	hydraulic oil
3	3/8"G	3/8"G	16	[0.63]	380	5500	420	6100	hydraulic oil
4	3/8"G	3/8"G	16	[0.63]	380	5500	420	6100	hydraulic oil
5	3/8"G	3/8"G	12	[0.47]	380	5500	420	6100	hydraulic oil
6	3/8"G	3/8"G	12	[0.47]	380	5500	420	6100	hydraulic oil
7	3/8"G	3/8"G	12	[0.47]	380	5500	420	6100	hydraulic oil
8	3/8"G	3/8"G	12	[0.47]	380	5500	420	6100	hydraulic oil
9	3/8"G	3/8"G	12	[0.47]	380	5500	420	6100	hydraulic oil
10	3/8"G	3/8"G	12	[0.47]	380	5500	420	6100	hydraulic oil
11	3/8"G	3/8"G	12	[0.47]	380	5500	420	6100	hydraulic oil
12	3/8"G	3/8"G	12	[0.47]	380	5500	420	6100	hydraulic oil

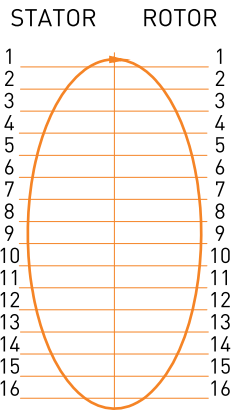
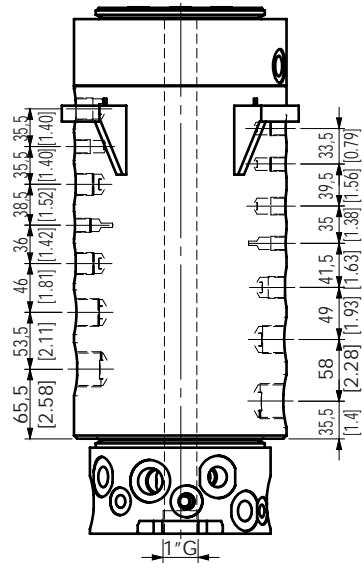
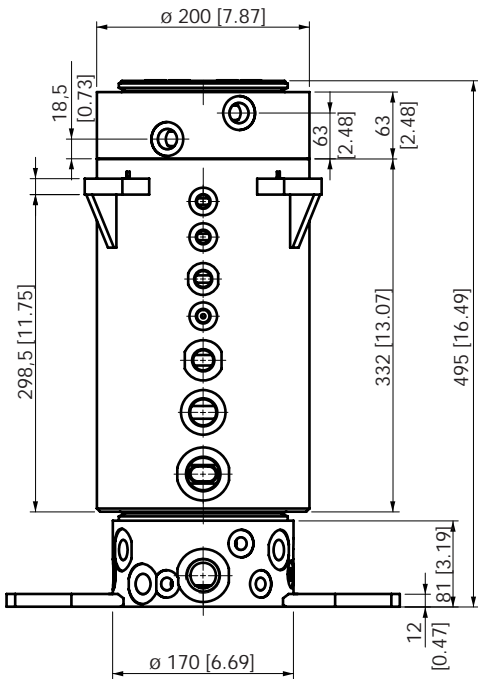
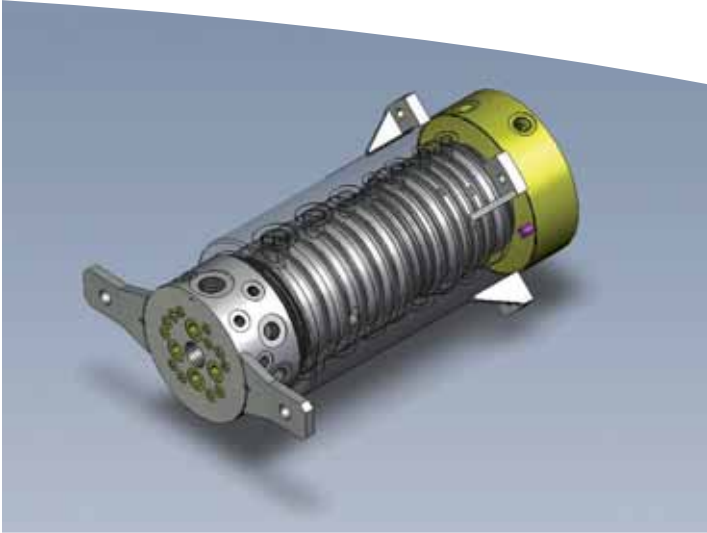
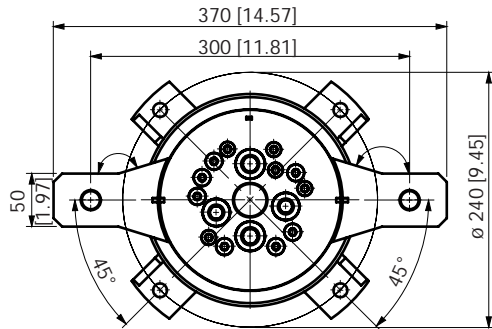
# SWIVEL JOINT 13 WAYS COD. D0190130000



POS	STATOR	ROTOR	DN		WORKING PRESSURE		MAX PRESSURE		FLUID
			mm	inches	bar	PSI	bar	PSI	
1	3/4"G	3/4"G	16	[0.63]	380	5500	420	6100	hydraulic oil
2	3/4"G	3/4"G	16	[0.63]	380	5500	420	6100	hydraulic oil
3	3/4"G	3/4"G	16	[0.63]	380	5500	420	6100	hydraulic oil
4	3/4"G	3/4"G	16	[0.63]	380	5500	420	6100	hydraulic oil
5	1/2"G	1/2"G	12	[0.47]	380	5500	420	6100	hydraulic oil
6	1/2"G	1/2"G	12	[0.47]	380	5500	420	6100	hydraulic oil
7	1/2"G	1/2"G	12	[0.47]	380	5500	420	6100	hydraulic oil
8	1/2"G	1/2"G	12	[0.47]	380	5500	420	6100	hydraulic oil
9	1/2"G	1/2"G	12	[0.47]	380	5500	420	6100	hydraulic oil
10	1/2"G	1/2"G	12	[0.47]	380	5500	420	6100	hydraulic oil
11	1/2"G	1/2"G	12	[0.47]	380	5500	420	6100	hydraulic oil
12	1/2"G	1/2"G	12	[0.47]	380	5500	420	6100	hydraulic oil
13	1/2"G	1/2"G	12	[0.47]	380	5500	420	6100	hydraulic oil



# SWIVEL JOINT 16 WAYS COD. D0125160100



6POS	STATOR	ROTOR	WORKING PRESSURE		MAX PRESSURE		FLUID
			bar	PSI	bar	PSI	
1	3/4"G	3/4"G	0	0	420	6100	hydraulic oil
2	3/4"G	3/4"G	270	4000	420	6100	hydraulic oil
3	3/4"G	3/4"G	160	2300	420	6100	hydraulic oil
4	3/4"G	3/4"G	160	2300	420	6100	hydraulic oil
5	1/2"G	1/2"G	175	2500	420	6100	hydraulic oil
6	1/2"G	1/2"G	175	2500	420	6100	hydraulic oil
7	1/2"G	1/2"G	60	900	420	6100	hydraulic oil
8	1/2"G	1/2"G	60	900	420	6100	hydraulic oil
9	1/2"G	1/2"G	0	0	420	6100	hydraulic oil
10	1/2"G	1/2"G	0	0	420	6100	hydraulic oil
11	1/2"G	1/2"G	0	0	420	6100	water + antifreeze
12	1/2"G	1/2"G	0	0	420	6100	water + antifreeze
13	1/2"G	1/2"G	28	400	420	6100	hydraulic oil
14	1/2"G	1/2"G	28	400	420	6100	hydraulic oil
15	1/2"G	1/2"G	20	300	420	6100	hydraulic oil
16	1/2"G	1/2"G	20	300	420	6100	hydraulic oil

## OFFER INQUIRY

Date \_\_\_\_\_

Quantity \_\_\_\_\_

**Company**

Company: \_\_\_\_\_

Address: \_\_\_\_\_

Zip code: \_\_\_\_\_ City: \_\_\_\_\_ Country: \_\_\_\_\_

**Contact**

Name: \_\_\_\_\_

Department: \_\_\_\_\_

E-mail: \_\_\_\_\_

Telephone: \_\_\_\_\_ Fax: \_\_\_\_\_

## Technical information

**Working conditions**

Application: \_\_\_\_\_

Environment Temperature (°F):      Min: \_\_\_\_\_ Max: \_\_\_\_\_

Usage site: \_\_\_\_\_

**Data of the hydraulic part**

Ways	Port dimension		Fluid type pressure psi (bar)	Max pressure psi (bar)	Working fluid
	Stator	Rotor			

Total number of ways: \_\_\_\_\_

**Paint**

No     Yes    If Yes, color \_\_\_\_\_ Kind of paint: \_\_\_\_\_

**Remarks about the hydraulic part**

## Informations about the electrical part

**Additional employment conditions:**

Operating speed (rpm): \_\_\_\_\_

Humidity: \_\_\_\_\_

Mode of operations: \_\_\_\_\_

**Data of electrical part**

Ways	Amperage (A)	Operating Voltage (V)	Transition resistance (mΩ)	Cabel type	Cross section	
					(mm <sup>2</sup> )	[in <sup>2</sup> ]

Total number of transition paths: \_\_\_\_\_

**Mechanical informations**

Lenght of cable brush side (mm) [inch]: \_\_\_\_\_ Lenght of cable slip-ring side (mm) [inch]: \_\_\_\_\_

Connectors:  No  Yes Connector type: \_\_\_\_\_

Total high (mm) [inch]: \_\_\_\_\_ Total cross section (mm<sup>2</sup>) [inch<sup>2</sup>]: \_\_\_\_\_

Protection type IP \_\_\_\_\_

Max revolution (1/min): \_\_\_\_\_ continuous  oscillating  chopping

Connection surface treatment: Plain brass  Nickel plated  Gold plated  Silver plated

**Remarks about the electrical part**



Young Powertech Inc  
3060 Plaza Drive # 107  
Garnet Valley PA 19061  
Tel: (610) 558-0760  
Fax: (610) 558-0762  
e-mail: [info@yptius.com](mailto:info@yptius.com)