



Airline

ISO 9001:2015 Certified

Products and Solutions to Power Your Ideas

Quality Components



Machine & Process Safety
Assessment Group

A division of  Airline

Rexroth
Bosch Group



OPTO 22

EATON

HYDAC

OMRON



SCHMERSAL



Haskel

BRADEN

ABB

Orientalmotor

We have thousands of parts in stock & ready to ship!

FLUID SYSTEM COMPONENTS	AUTOMATION & FRAMING	ELECTRICAL & SAFETY
<ul style="list-style-type: none"> • HYDRAULIC PUMPS • HYDRAULIC MOTORS • HYDRAULIC VALVES & MANIFOLDS • HYDRAULIC CYLINDERS • ACCUMULATORS • HEAT EXCHANGERS/COOLERS • HYDRAULIC POWER UNITS • ELECTRONICS • FILTRATION & FLUID CONDITIONING • HYDRAULIC ACCESSORIES • HOSE, CONNECTORS & ACCESSORIES • LUBRICATION EQUIPMENT • WINCHES & GEAR DRIVES 	<ul style="list-style-type: none"> • PNEUMATIC CYLINDERS & VALVES • AIR PREP EQUIPMENT & AIR DRYERS • ELECTRIC REGULATORS & SWITCHES • ALUMINUM STRUCTURAL FRAMING • CONVEYING PRODUCTS & SYSTEMS • LINEAR MOTION COMPONENTS • ELECTRIC DRIVES & MOTORS • MOTION CONTROLLERS • PLCs, HMIs & COMBINATION UNITS • SENSORS & VISION COMPONENTS • FIELDBUS & DISTRIBUTED I/O • TEMPERATURE & PROCESS CONTROL • LIQUID & GAS PRESSURE PRODUCTS 	<ul style="list-style-type: none"> • METERING DEVICES & RELAYS • TIMERS & COUNTERS • LIMIT SWITCHES • CONTACTORS & MOTOR STARTERS • PILOT DEVICES & INDICATORS • CIRCUIT PROTECTION • CONNECTIVITY & WIRE MANAGEMENT • POWER SUPPLIES & TRANSFORMERS • POWER QUALITY & DISTRIBUTION • ELECTRICAL ENCLOSURES • SAFETY CONTROLS & SWITCHES • LIGHT CURTAINS, BEAMS & SCANNERS • PERIMETER FENCING & GUARDING

Airline can customize our products to meet your requirements.

See other side for our value-add capabilities.

800-999-7378

www.airlinehyd.com



Airline

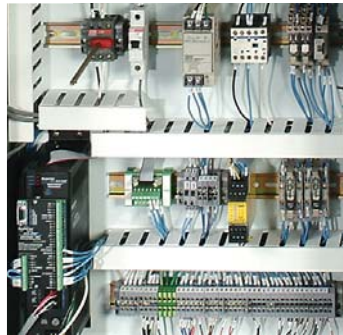
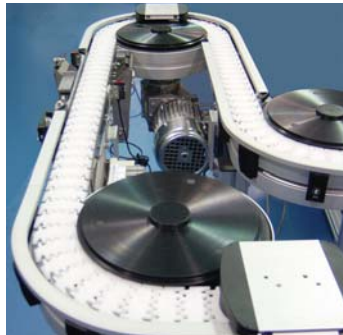
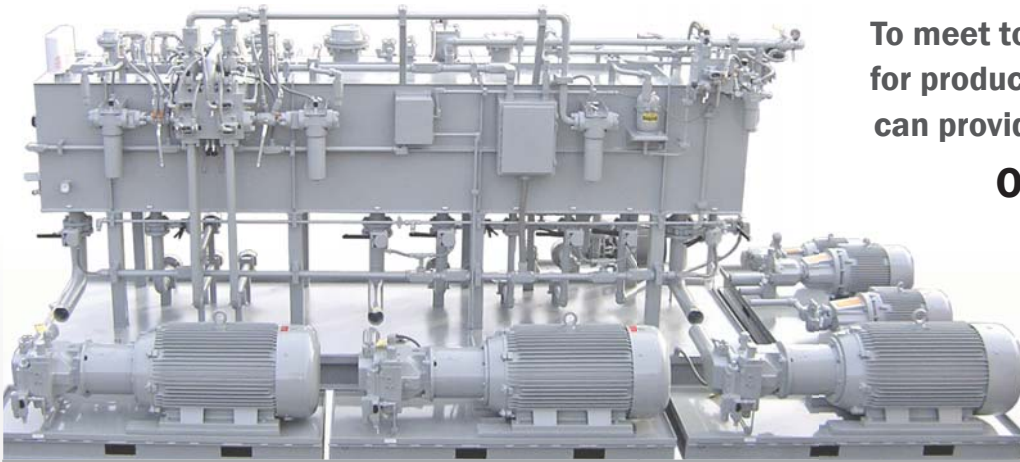
ISO 9001:2015 Certified

We Add Value

To meet today's ever-increasing demand for productivity, you need a supplier who can provide solutions, not just products.

Our expertise is essential.

Our staff of qualified field engineers, system engineers, software specialists, and assembly technicians integrate our power and control products to deliver efficient and cost-effective solutions.



HYDRAULICS	PNEUMATICS/AUTOMATION	ELECTRICAL & CONTROL	FRAMING & SAFETY
<ul style="list-style-type: none"> • Design & fabricate custom power units, manifolds, winch systems & more. • Develop turnkey fluid power systems with PLC/PC control • Documentation packages • Hydraulic system rebuilds • Control wiring & testing 	<ul style="list-style-type: none"> • Design custom pick & place assemblies, automation systems & subsystems • Documentation packages • Fabrication/subassembly of: <ul style="list-style-type: none"> - Pneumatic panels - Manifold assemblies - Pick & place units - Subsystems 	<ul style="list-style-type: none"> • Develop turnkey control/motion/vision systems • PLC/motion programming • Complete electrical documentation packages • Fabrication/subassembly of: <ul style="list-style-type: none"> - Electrical panels & subsystems - Cable assemblies - Motor starter panels 	<ul style="list-style-type: none"> • Design & fabricate: <ul style="list-style-type: none"> - Machine safeguarding - Machine bases - Ergonomic workstations - Framing kits • Electrical safety components mounting & wiring • Frame installation • Safety assessment & solutions

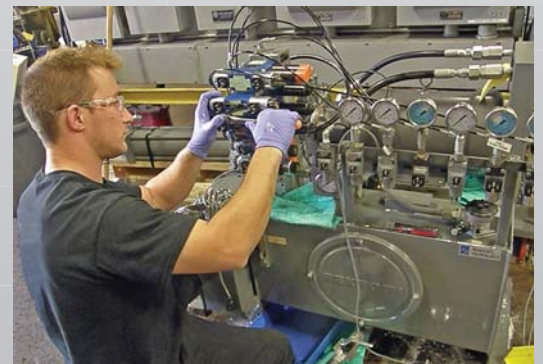
Our Service & Repair team keeps your system online & operating at peak efficiency.

- Factory-trained repair & service staff
- Authorized repair center for Rexroth, Haskel, Lincoln & more
- Prompt estimates - speedy repairs
- Pick up & delivery or on-site service available
- Preventive maintenance including fluid analysis, filter replacement & more
- Installation, start-up & troubleshooting

Need training? We do that too.

Airline offers classes in hydraulics, pneumatics, automation and machine safeguarding.

Download our complete Training Catalog on our website.



800-999-7378

www.airlinehyd.com