



Airline

Proudly announcing our new partnership
with



Bell-Everman, Inc.

Offering expertise in precision servo-mechanism design



ServoBelt

[Click here](#)
to see it in
ACTION!

Other Bell-Everman Products

KAOS OEM Precision Dual Axis Stages



**Grand Prize
Winner!**

Design News
Excellence In Design Award

Two axes of motion from a single linear motor!

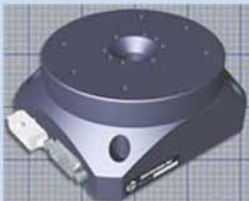
Affordable accuracy and repeatability in a clean, low profile package for processes that require high speed and acceleration.

LowBoy Precision Linear Axial Stages



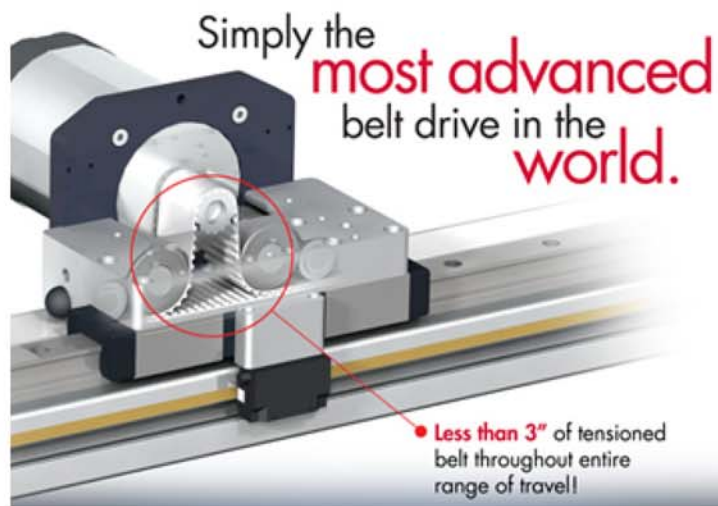
Affordable axes with accuracy and repeatability, each in a clean, low profile package for metrology and light to medium mechanical processes.

DDT Precision Rotary Stages



The DDT100 Rotary Axis combines affordability with accuracy and repeatability in a clean, low profile package, perfect for fulfilling your rotary motion requirements for metrology and light mechanical processes.

Airline Hydraulics Corp. is pleased to represent Bell-Everman, a leading motion device manufacturer specializing in innovative solutions for both high speed and high accuracy rotary and linear motion devices. Their innovative ServoBelt linear drive provides belt-drive economy with screw-drive responsiveness and best-in-class repeatability with linear motor speed.



At the heart of the technology is a static bonded lower belt that meshes with the upper dynamic belt so that the active belting under tension is only a few inches long. Servo tuning can have much higher gains than conventional belts, because stiffness is high and does not change throughout the travel.

Benefits include:

- Five standard motor sizes (three Nema34, two Nema23), third party motors supported
- Eleven standard chassis configurations (six single 20mm rail, five dual 20mm rail) in virtually unlimited lengths
- Out-of-the-box bi-directional repeatability of $\pm 60\mu\text{m}$.
- All bearings are lubed-for-life, no maintenance required.
- 16,000 and 20,000 CPR rotary encoders are standard.
- Actuators and stages are configurable as multi-axis Cartesian and gantry robots.
- Modules may be purchased as single axis elements for your OEM equipment or as a completely integrated multi-axis robot with amplifiers, cables and optional linear encoders.
- Multiple carriages can be supplied for independent motions on the same axis, and dual motor carriages are available to double our standard linear forces.
- All chassis are based on Bosch Rexroth T-slot extrusions for ease of integration and a wide array of mounting hardware.

Call Airline toll free: 1-800-999-SERV (7378)

www.airlinehyd.com