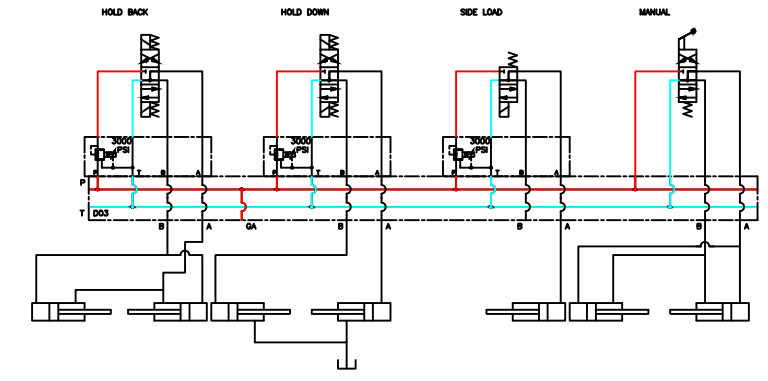
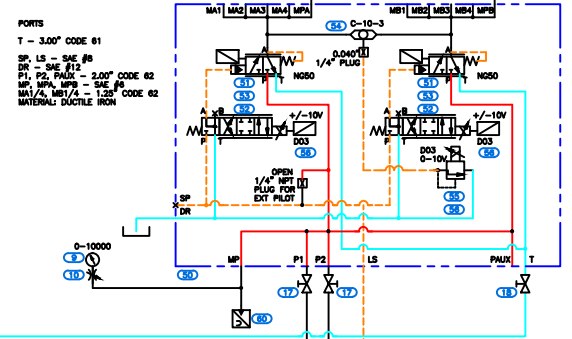
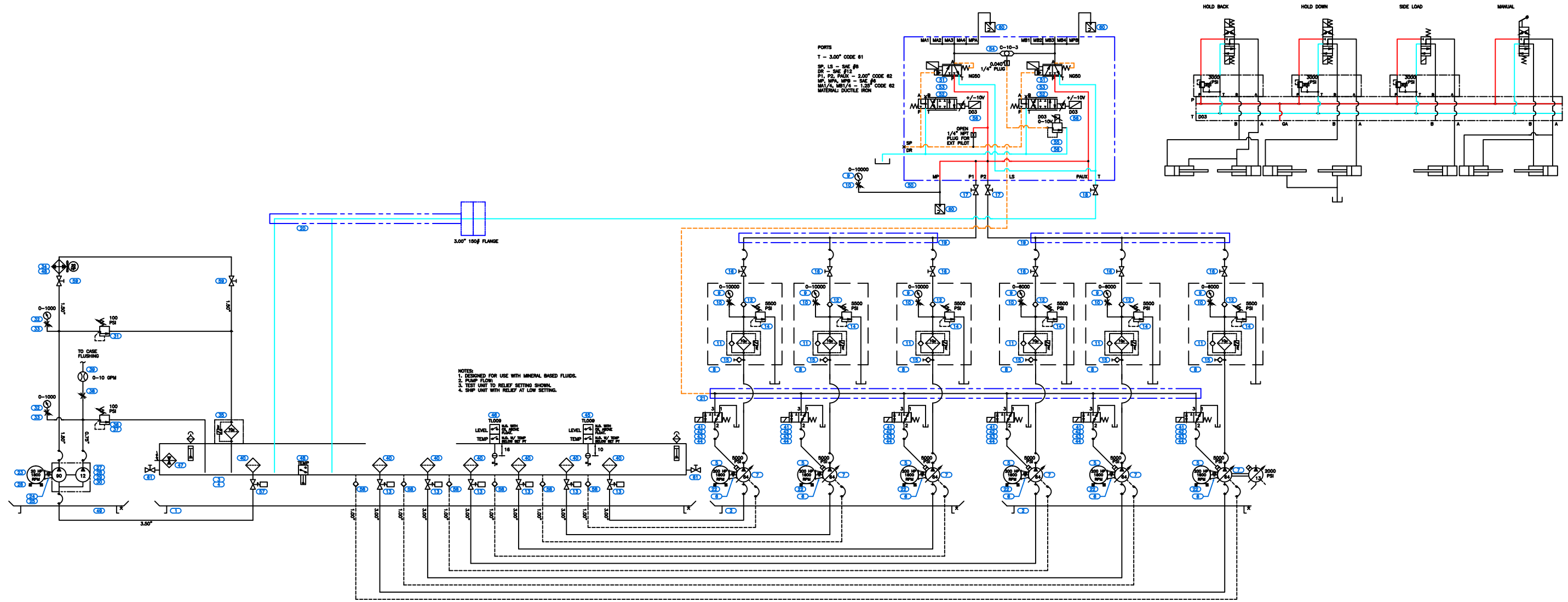


REV.	DESCRIPTIONS	DATE	BY
-			



NOTES:
1. DESIGNED FOR USE WITH MINERAL BASED FLUIDS.
2. PUMP FLOW:
3. TEST UNIT TO RELIEF SETTING SHOWN.
4. SHIP UNIT WITH RELIEF AT LOW SETTING.

Approved By: _____

Signature: _____ Date: _____

THIS PRINTED COPY MAY NOT BE THE LATEST REVISION,
PLEASE REFER TO AIRLINE ENGINEERING FOR THE MOST CURRENT REVISION.

"Your resource for fluid power, automation, motion control products and value-added solutions"

WARRANTY NOTICE: Do not make any modifications to Airline Product to correct problem or site condition without first contacting Airline sales engineer or engineering department. Doing so may affect product warranty and Airline will not be responsible for any unauthorized rework.

PROPRIETARY NOTICE: This drawing contains proprietary and confidential information to Airline. This drawing and the whole entire information contained herein, and any other tangible representation thereof, is not to be copied, reproduced, duplicated, distributed or modified in whole or in part, and/or used without the expressed written consent of Airline.

APPROVAL NOTICE: The client shall be responsible for verifying all critical dimensions and field conditions. Airline must be notified in writing of any dimensions found to be inconsistent indicated by these approval drawings. The client must submit signed (approved) drawings prior to start of production.

TOLERANCES UNLESS SPECIFIED Interpret Drawing Per ANSI Y14.5-1994	
METRICS	ENGLISH
.X ± 0.5mm	[.XX ± 0.02"]
.XX ± 0.25mm	[.XXX ± 0.010"]
Angular .X = 1.0°	Angular .X = 1.0°
Angular .XX = 0.5°	Angular .XX = 0.5°
√ ± 3.2 um FINISH	√ ± 125 FINISH
⊥ Perpendicularity= 0.1	⊥ Perpendicularity= 0.005"
∥ Parallelism = 0.1	∥ Parallelism= 0.005"
◎ Concentricity= 0.05 TIR	◎ Concentricity= 0.002" TIR
Third Angle Projection	
All Threads to be CLASS 2 Remove Sharp Edges and Burrs	

3557 Progress Drive,
Bensalem, PA 19020
Phone: (215) 638-4700
Fax: (215) 637-1707
www.airlinehyd.com

TITLE: 1200HP TEST STAND HYDRAULIC SCHEMATIC			
SCALE: NTS	DWG. #: A0101-00H001	REV.:	0
SIZE: B	BY: RGR	DATE: 11/29/11	SHEET: 1 OF 1

JOB #: A-0101