

PRODUCT DATA SHEET INFORMATION



Manual L-O-X® Valves Series 15

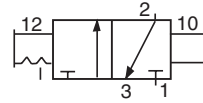
Energy Isolation

Port Sizes 1½ and 2

ROSS L-O-X® valves are pneumatic energy isolation devices and are generally used as the first valve in a line supplying compressed air to equipment. Air can be shut off by pushing the red L-O-X® handle inward; downstream air is simultaneously exhausted through the L-O-X® exhaust port. OSHA compliance requires that the valve be padlocked in this position to prevent handle from being pulled out inadvertently during maintenance and/or servicing.

FEATURES:

- Easily identified by unique shape
- Lockable only in the OFF position
- Large exhaust port exceeds inlet size for rapid release of pressure
- Fluorocarbon slipper seals help ensure “shift-ability” even after long periods of inactivity
- Positive action (2 positions only)
- Simple push/pull of the red handle provides positive direct manual operation
- Integrated pressure sensing port allows installation of either a Pop-Up Indicator or Pressure Switch (see page 2) to verify pressure is release.



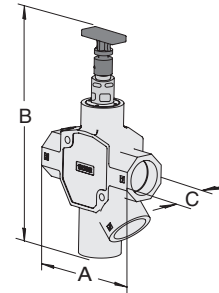
Manual L-O-X® valve are padlocked in closed position. The valve can only be locked in the closed position. Push/pull operation - Push the handle inward to exhaust downstream air (lockable in this position). Pull the handle outward to supply air downstream.

L-O-X® Valves port sizes 1½ and 2 can be padlocked in two locations, at the handle or at the end of the spool.

Ordering Information

Port Size In-Out	Valve Model Exh. Number*	Avg. C _v In-Out Out-Exh.	Dimensions inches (mm)			Weight lb (kg)
			A	B	C	
1½	2 Y1523C8002	38 47	8.2 (209)	14.9 (379)	3 (77)	8.2 (3.57)
2	2 Y1523C9012	38 47	8.2 (209)	14.9 (379)	3 (77)	8.2 (3.57)

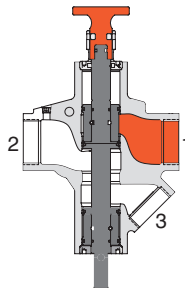
*NPT port treads. For BSPP threads, insert a “D” after “Y” to the model number, e.g., YD1523C8002.



VALVE OPERATION

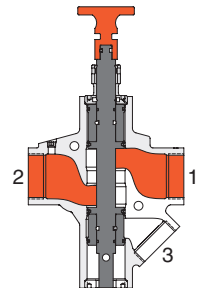
Valved Closed

With a short push of the red handle inward, the flow of supply air is blocked and downstream air is exhausted via the exhaust port while servicing or maintaining machinery. Padlock the L-O-X® valve in this position to prevent the handle from being pulled outward inadvertently to avoid potential for human injury while servicing machinery.



Valve Open

When the red handle is pulled out, supply air flows freely from inlet to outlet and flow to exhaust is blocked. A detent keeps the handle in the open position. The handle is not designed to be locked in this position, thereby providing for ready shut-off when necessary.



Standard Specifications

Ambient/Media Temperature: 40° to 175°F (4° to 80°C).

Flow Media: Filtered air; 5 micron recommended.

Inlet Pressure: 0 to 300 psig (0 to 20 bar).

Body Paint: Yellow.

Port Threads: NPT, BSPP.

Lock Hole Diameter: 0.38 inch (9.6 mm).

Length of Hole: 0.75 inch (19.1 mm).

NOTE: Per specifications and regulations, these products are defined as energy isolation devices, **NOT AS EMERGENCY STOP DEVICES.**

Referenced Standards: All standards are subject to revision. Parties are encouraged to investigate and apply the most recent editions of the standards indicated below.

OSHA 29 CFR 1910.147

CSA Z142-10

CSA Z460-05

ISO 13849-1

ISO 14118:2000

EN 1037

ANSI/ASSE Z244.1- 2003 (R2008)

ANSI/PMMI B155.1- 2011

ANSI B11.TR6-2010

APPLICATIONS: Lockout / Togout.



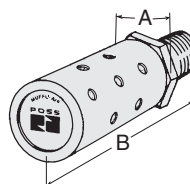
ACCESSORIES



Muffl-Air® Silencer

Port Size	Average C _v	Model Number	Threads*	Dimensions inches (mm)		Weight lb (kg)
				A	B	
2	50	5500B9001	Female	3.0 (77)	7.3 (185)	3.5 (1.6)

* NPT port threads. For BSPP threads, add a "D" prefix to the model number., e.g., D5500A9001.

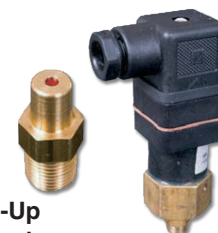
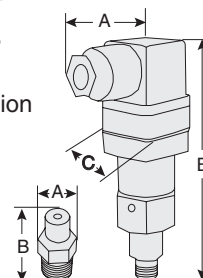


Visual Pop-Up Indicator or Pressure Switch (electrical)

- May be installed on all L-O-X® valves and manual L-O-X® valves with EEZ-ON® operation with pressure sensing port
- Provides a means to verify the release of downstream pressure to next obstruction

Model Number	Inlet Port Size*	Verification Option	Dimensions inches (mm)			Weight lb (kg)
			A	B	C	
988A30	1/8	Pop-Up Indicator	0.55 (14)	0.98 (25)	–	0.03 (0.01)
586A86	1/8	Pressure Switch	2.01 (51)	4.3 (110)	1.22 (31)	0.28 (0.12)

* NPT port threads.



Pop-Up Indicator

Pressure Switch

Multiple Lockout Device

Model Number 356A30



Multiple Lockout Device

L-O-X® Sensing Port

L-O-X® Sensing Port - Series 15 manual L-O-X® valves and manual L-O-X® valves with EEZ-ON® operation are now provided with 1/8 NPT sensing ports, enabling installation of a pressure sensing device such as the Pop-Up Indicator or Pressure Switch shown above. Standards suggest that machine design should include a method for verifying the release of energy after lockout.

The ROSS 988A30 Pop-Up Indicator is constructed for the industrial environment with a brass body and 1/8" NPT connection. It offers 360° visibility and a redundant verification feature. By pushing on the red plunger, the operator can "feel" the presence of pressure and verify that the indicator is performing its sensing function.

The ROSS 586A86 Pressure Switch offers an electronic pressure sensing option that can be integrated into a safety monitoring system, which confirms energy isolation throughout the circuit.

COMPANY INFORMATION

In 1954 ROSS patented the first double valve for the most demanding of safety applications: metal forming press clutch and brake control. Since that time, ROSS has patented several improved versions of the double valve and expanded its safety product offering. ROSS has become recognized as the premier supplier of high-quality pneumatic and hydraulic safety components for various applications in metal forming and other industries.

Your local ROSS distributor is:



ROSS CONTROLS
U.S.A.

Customer Svs. 1-800-GET-ROSS
Technical Svs. 1-888-TEK-ROSS
sales@rosscontrols.com
www.rosscontrols.com

ROSS EUROPA GmbH
Germany
Tel: 49-(0)6103-7597-0
www.rosseuropa.com

ROSS ASIA K.K.
Japan
Tel: 81-42-778-7251
www.rossasia.co.jp

WARRANTY, CAUTIONS and WARNINGS
Standard ROSS warranty, cautions and warnings apply, available upon request or at www.rosscontrols.com.

ROSS UK Ltd.
United Kingdom
Tel: 44-(0)1543-671495
www.rossuk.co.uk

ROSS CONTROLS INDIA Pvt. Ltd.
India
Tel: 91-44-2624-9040
rossindia@airtelmail.in

ROSS SOUTH AMERICA Ltda.
Brazil
Tel: 55-11-4335-2200
vendas@ross-sulamerica.com.br

DIMAFLUID s.a.s.
France
Tel: 33-01-49-45-65-65
www.dimafluid.com

ROSS CONTROLS (CHINA) Ltd.
China
Tel: 86-(0)21-6915-7951
www.rosscontrolschina.com

manufactIS GmbH
Germany
Tel: 49-(0)2366-9393-790
www.manufactis.net