

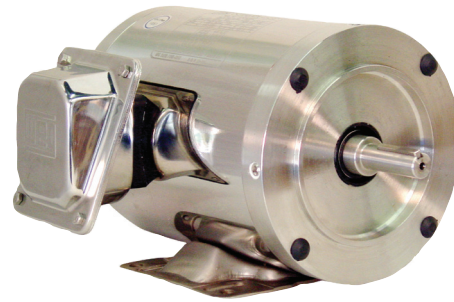
Wash Down Duty Motors



WASH DOWN DUTY – SHARK™ – STAINLESS STEEL TEFC - Three Phase - C-Face Foot Mount

For food processing, pharmaceutical and other applications requiring extreme cleanliness and frequent washdowns.

- * Class F epoxy insulation
- * F1 Mounted
- * Nameplate data laser etched on body of motor



Inverter Rated:
10 : 1 for variable torque
6:1 Constant Torque

Features that make a difference:

- * All 304 stainless steel frame, endbells and terminal box
- * Thermostats on each phase-auto reset
- * Double lip seals
- * 4 drain plugs in endbells
- * Locked DE bearings

NEMA PREMIUM EFFICIENCY

SUPER PREMIUM EFFICIENCY

GENERAL PURPOSE

SEVERE DUTY THREE PHASE

EXPLOSION PROOF

PUMP MOTORS

FARM DUTY

AIR HANDLING

OIL WELL PUMPING

COMPRESSOR DUTY

VECTOR DUTY

WASHDOWN DUTY SHARK™ (Stainless Steel)

WASH DOWN DUTY – SHARK™ – STAINLESS STEEL TEFC - THREE PHASE - C-FACE FOOT MOUNT - NEMA PREMIUM

HP	kW	RPM	NEMA Frame	Catalog Number	List Price	Mult. Symbol	Approx. Shipping Weight (lbs)	Service Factor	FL Amps @ High	FL. Eff (%)	“C” Dimension (in)	Voltage (V)	Notes
1	0.75	1800	143TC	00118ET3ESS143TC	857	S1	39	1.15	1.40	85.5	12.600	208-230/460	21
1.5	1.1	1800	145TC	00158ET3ESS145TC	872	S1	70	1.15	2.08	86.5	13.600	208-230/460	21
2	1.5	3600	145TC	00236ET3ESS145TC	1,113	S1	49	1.15	2.58	85.5	13.600	208-230/460	21
		1800	145TC	00218ET3ESS145TC	1,219	S1	52	1.15	2.78	86.5	13.600	208-230/460	21
3	2.2	3600	182TC	00336ET3ESS182TC	1,564	S1	95	1.15	3.71	86.5	16.000	208-230/460	21
		1800	182TC	00318ET3ESS182TC	1,453	S1	102	1.15	3.65	89.5	16.000	208-230/460	21
5	3.7	3600	184TC	00536ET3ESS184TC	1,779	S1	116	1.15	6.01	88.5	17.000	208-230/460	21
		1800	184TC	00518ET3ESS184TC	1,607	S1	116	1.15	6.08	89.5	17.000	208-230/460	21
7.5	5.5	3600	213TC	00736ET3ESS213TC	2,208	S1	175	1.15	8.90	89.7	22.000	208-230/460	21
		1800	213TC	00718ET3ESS213TC	2,201	S1	190	1.15	9.01	91.7	22.000	208-230/460	21
10	7.5	3600	215TC	01036ET3ESS215TC	2,713	S1	202	1.15	11.8	90.2	22.000	208-230/460	21
		1800	184TC	01018ET3ESS184TC	2,359	S1	202	1.15	12.0	91.7	17.000	208-230/460	21
		1800	215TC	01018ET3ESS215TC	2,452	S1	207	1.15	12.0	91.7	22.000	208-230/460	21

Refer to electrical and mechanical data sections for additional technical information.

Please refer to back cover for description of “NOTES”

Can't find what you are looking for? Call 1-800-ASK-4WEG (275-4934)

All data subject to change without notice



WASH DOWN DUTY – SHARK™ – STAINLESS STEEL
TEFC - THREE PHASE - C-FACE FOOT MOUNT - HIGH EFFICIENCY

Table with 14 columns: HP, kW, RPM, NEMA Frame, Catalog Number, List Price, Mult. Symbol, Approx. Shipping Weight (lbs), Service Factor, FL Amps @ High, FL Eff (%), "C" Dimension (in), Voltage (V), Notes. Rows include various motor specifications for different duty categories like NEMA Premium Efficiency, Super Premium Efficiency, General Purpose, Severe Duty Three Phase, and Explosion Proof.

Refer to electrical and mechanical data sections for additional technical information.
Please refer to back cover for description of "NOTES"
Can't find what you are looking for? Call 1-800-ASK-4WEG (275-4934)
All data subject to change without notice

WASH DOWN DUTY – SHARK™ – STAINLESS STEEL
TEFC - THREE PHASE - C-FACE FOOTLESS - HIGH EFFICIENCY

Table with 14 columns: HP, kW, RPM, NEMA Frame, Catalog Number, List Price, Mult. Symbol, Approx. Shipping Weight (lbs), Service Factor, FL Amps @ High, FL Eff (%), "C" Dimension (in), Voltage (V), Notes. Rows include various motor specifications for different duty categories like Pump Motors, Farm Duty, Air Handling, Oil Well Pumping, Compressor Duty, and Vector Duty.

Refer to electrical and mechanical data sections for additional technical information.
Please refer to back cover for description of "NOTES"
Can't find what you are looking for? Call 1-800-ASK-4WEG (275-4934)
All data subject to change without notice