

CONSTRUCTION

- Body, locking teeth and release collar are incorporated into the one piece construction
- Straights and shapes are manufactured from CA360, CA345 or CA377 brass
- Bottom "O" Ring is made from Buna N

ADVANTAGES

- No special tube preparation necessary
- No special tools needed for assembly
- Can be assembled and disassembled repeatedly
- Automatic locking and sealing up to maximum working Pressure of tubing
- Elbow and tees available with 360° swivel
- Release collar allows instant removal of tubing

APPLICATIONS

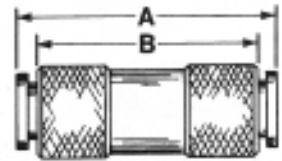
- Compatible with high quality thermoplastic and nylon tubing
- For use in instrumentation, automation and signal circuits
- Pressures and temperatures are governed by the parameters of the tubing involved.
- Excellent vibration characteristics

NOTES

- Current price list represents in stock cataloged items.
- Non-stock items and special parts are available on a quotation basis.
- Configurations and dimensions are subject to change without notice.

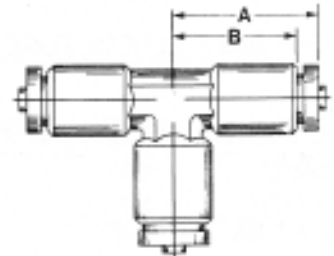
262PP STRAIGHT UNION, TUBE TO TUBE

PART NUMBER	O.D. TUBE	A	B
262PP-2	1/8	1.31	1.06
262PP-2.5	5/32	1.31	1.06
262PP-4	1/4	1.65	1.37
262PP-5	5/16	1.76	.56
262PP-6	3/8	1.65	1.38
262PP-8	1/2	1.85	1.58



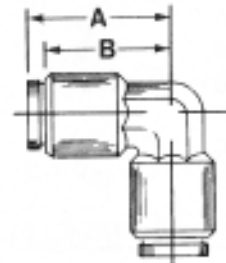
264PP UNION TEE, TUBE TO TUBE TO TUBE

PART NUMBER	O.D. TUBE	A	B
264PP-2	1/8	.77	.65
264PP-2.5	5/32	.79	.66
264PP-4	1/4	1.02	.88
264PP-5	5/16	1.07	1.07
264PP-6	3/8	1.08	.94
264PP-8	1/2	1.16	1.02



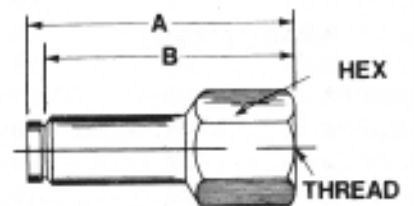
265PP UNION ELBOW, TUBE TO TUBE

PART NUMBER	O.D. TUBE	A	B
265PP-2.5	5/32	.79	.65
265PP-4	1/4	1.02	.89
265PP-5	5/16	1.03	1.03
265PP-6	3/8	1.10	.96
265PP-8	1/2	1.16	1.02



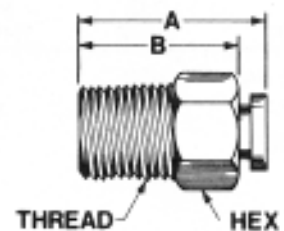
266PP FEMALE ADAPTER, TUBE TO FPT

PART NUMBER	O.D. TUBE	PIPE THREAD	A	B	HEX
266PP-2A	1/8	1/8	1.07	.95	9/16
266PP-2.5A	5/32	1/8	1.07	.95	9/16
266PP-4A	1/4	1/8	1.26	1.12	9/16
266PP-4B	1/4	1/4	1.45	1.31	3/4
266PP-6B	3/8	1/4	1.45	1.31	3/4
266PP-6C	3/8	3/8	1.45	1.31	7/8



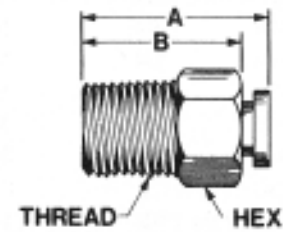
268PP MALE CONNECTOR, TUBE TO MPT

PART NUMBER	O.D. TUBE	PIPE THREAD	A	B	HEX
268PP-2X	1/8	1/16	.80	.72	3/8
268PP-2A	1/8	1/8	.73	.61	3/8
268PP-2.5A	5/32	1/8	.79	.66	7/16
268PP-2.5B	5/32	1/4	.97	.84	9/16
268PP-4X	1/4	1/16	1.32	.36	1/2
268PP-4A	1/4	1/8	1.06	.92	7/16
268PP-4B	1/4	1/4	1.06	.92	9/16



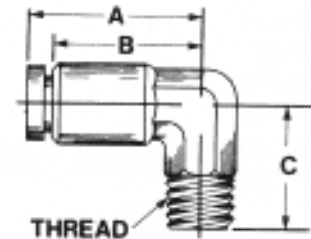
268PP MALE CONNECTOR, TUBE TO MPT CONTINUED

PART NUMBER	O.D. TUBE	PIPE THREAD	A	B	HEX
268PP-4C	1/4	3/8	1.06	.92	11/16
268PP-5A	5/16	1/8	1.36	.36	9/16
268PP-5B	5/16	1/4	1.25	.50	9/16
268PP-6A	3/8	1/8	1.22	1.08	9/16
268PP-6B	3/8	1/4	1.20	1.06	9/16
268PP-6C	3/8	3/8	1.08	.94	11/16
268PP-6D	3/8	1/2	1.06	.92	7/8
268PP-8C	1/2	3/8	1.31	1.18	11/16
268PP-8D	1/2	1/2	1.16	1.02	7/8



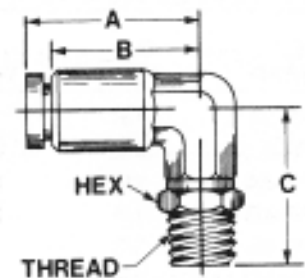
269PP MALE ELBOW, TUBE TO MPT

PART NUMBER	O.D. TUBE	PIPE THREAD	A	B	C
269PP-2X	1/8	1/16	.92	.36	.78
269PP-2A	1/8	1/8	.77	.65	.68
269PP-2.5A	5/32	1/8	.79	.66	.68
269PP-2.5B	5/32	1/4	.92	.50	.87
269PP-4A	1/4	1/8	1.02	.88	.69
269PP-4B	1/4	1/4	1.02	.88	.94
269PP-5A	5/16	1/8	1.03	.36	.90
269PP-5B	5/16	1/4	1.03	.50	.96
269PP-6B	3/8	1/4	1.08	.94	.94
269PP-6C	3/8	3/8	1.10	.96	.98
269PP-8C	1/2	3/8	1.16	1.02	1.04
269PP-8D	1/2	1/2	1.16	1.02	1.29



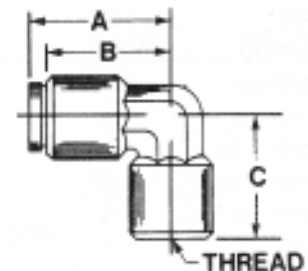
269PPS 360° SWIVEL ELBOW, TUBE TO MPT

PART NUMBER	O.D. TUBE	PIPE THREAD	A	B	C
269PPS-2A	1/8	1/8	.77	.65	1.05
269PPS-2.5A	5/32	1/8	.79	.66	.87
269PPS-4A	1/4	1/8	1.02	.88	1.13
269PPS-4B	1/4	1/4	1.02	.88	1.32
269PPS-4C	1/4	3/8	1.02	.88	1.32
269PPS-6B	3/8	1/4	1.08	.94	1.44
269PPS-6C	3/8	3/8	1.08	.94	1.46
269PPS-8C	1/2	3/8	1.18	1.04	1.68
269PPS-8D	1/2	1/2	1.18	1.04	1.19



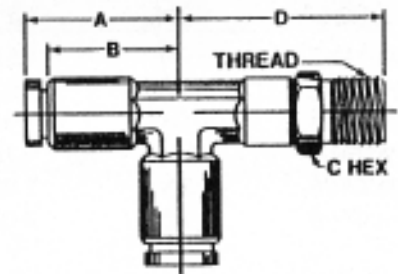
270PP FEMALE ELBOW, TUBE TO FPT

PART NUMBER	O.D. TUBE	PIPE THREAD	A	B	C
270PP-2.5A	5/32	1/8	.93	.75	.600
270PP-4A	1/4	1/8	1.04	.90	.748
270PP-6B	3/8	1/4	1.12	.98	.945



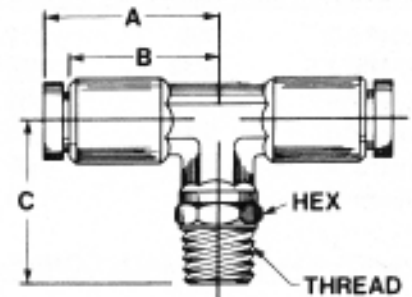
271PPS MALE SWIVEL RUN TEE, TUBE TO MPT TO TUBE

PART NUMBER	O.D. TUBE	PIPE THREAD	A	B	D
271PPS-2.5A	5/32	1/8	.77	.65	1.15
271PPS-4A	1/4	1/8	1.04	.90	1.13
271PPS-4B	1/4	1/4	1.04	.90	1.32
271PPS-5A	5/16	1/8	1.03	.33	1.05
271PPS-6B	3/8	1/4	1.08	.94	1.46
271PPS-6C	3/8	3/8	1.08	.94	1.46
271PPS-8C	1/2	3/8	1.18	1.04	1.68
271PPS-8D	1/2	1/2	1.18	1.04	1.91



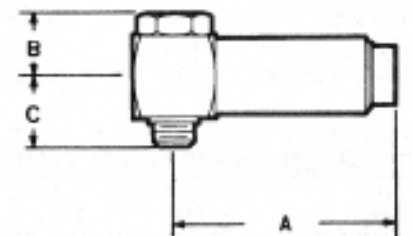
272PPS MALE SWIVEL BRANCH TEE, TUBE TO TUBE TO MPT

PART NUMBER	O.D. TUBE	PIPE THREAD	A	B	C
272PPS-2.5A	5/32	1/8	.79	.66	1.15
272PPS-4A	1/4	1/8	1.04	.90	1.13
272PPS-4B	1/4	1/4	1.04	.90	1.32
272PPS-5A	5/16	1/8	1.03	.36	1.05
272PPS-6B	3/8	1/4	1.10	.96	1.44
272PPS-8C	1/2	3/8	1.18	1.04	1.68
272PPS-8D	1/2	1/2	1.18	1.04	1.91



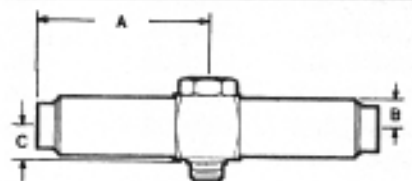
280PP BANJO ELBOW WITH UNF THREAD

PART NUMBER	O.D. TUBE	PIPE THREAD	A	B	C
280PP-2X1032	1/8	10-32	.98	.28	.24
280PP-2.5X10	5/32	10-32	.58	.28	.24



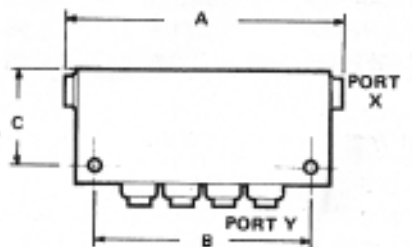
281PP BANJO TEE WITH UNF THREAD

PART NUMBER	O.D. TUBE	PIPE THREAD	A	B	C
281PP-2X1032	1/8	10-32	.98	.28	.24
281PP-2.5X10	5/32	10-32	.98	.28	.24



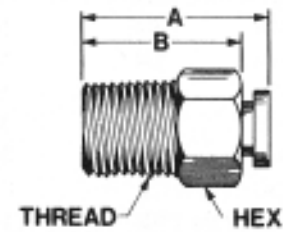
282PP MANIFOLD

PART NUMBER	PORT X	PORT Y	A	B	C
282PP-44	1/4	1/4	3.77	2.85	3/4
282PP-42.5	1/4	5/32	3.77	2.85	3/4
282PP-64	3/8	1/4	4.48	3.35	1



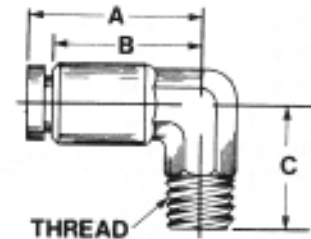
268PP MALE CONNECTOR, TUBE TO MPT CONTINUED

PART NUMBER	O.D. TUBE	PIPE THREAD	A	B	HEX
268PP-4C	1/4	3/8	1.06	.92	11/16
268PP-5A	5/16	1/8	1.36	.36	9/16
268PP-5B	5/16	1/4	1.25	.50	9/16
268PP-6A	3/8	1/8	1.22	1.08	9/16
268PP-6B	3/8	1/4	1.20	1.06	9/16
268PP-6C	3/8	3/8	1.08	.94	11/16
268PP-6D	3/8	1/2	1.06	.92	7/8
268PP-8C	1/2	3/8	1.31	1.18	11/16
268PP-8D	1/2	1/2	1.16	1.02	7/8



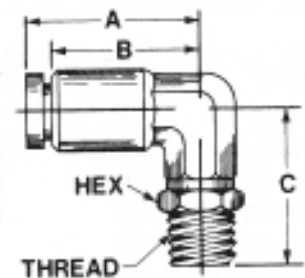
269PP MALE ELBOW, TUBE TO MPT

PART NUMBER	O.D. TUBE	PIPE THREAD	A	B	C
269PP-2X	1/8	1/16	.92	.36	.78
269PP-2A	1/8	1/8	.77	.65	.68
269PP-2.5A	5/32	1/8	.79	.66	.68
269PP-2.5B	5/32	1/4	.92	.50	.87
269PP-4A	1/4	1/8	1.02	.88	.69
269PP-4B	1/4	1/4	1.02	.88	.94
269PP-5A	5/16	1/8	1.03	.36	.90
269PP-5B	5/16	1/4	1.03	.50	.96
269PP-6B	3/8	1/4	1.08	.94	.94
269PP-6C	3/8	3/8	1.10	.96	.98
269PP-8C	1/2	3/8	1.16	1.02	1.04
269PP-8D	1/2	1/2	1.16	1.02	1.29



269PPS 360° SWIVEL ELBOW, TUBE TO MPT

PART NUMBER	O.D. TUBE	PIPE THREAD	A	B	C
269PPS-2A	1/8	1/8	.77	.65	1.05
269PPS-2.5A	5/32	1/8	.79	.66	.87
269PPS-4A	1/4	1/8	1.02	.88	1.13
269PPS-4B	1/4	1/4	1.02	.88	1.32
269PPS-4C	1/4	3/8	1.02	.88	1.32
269PPS-6B	3/8	1/4	1.08	.94	1.44
269PPS-6C	3/8	3/8	1.08	.94	1.46
269PPS-8C	1/2	3/8	1.18	1.04	1.68
269PPS-8D	1/2	1/2	1.18	1.04	1.19



270PP FEMALE ELBOW, TUBE TO FPT

PART NUMBER	O.D. TUBE	PIPE THREAD	A	B	C
270PP-2.5A	5/32	1/8	.93	.75	.600
270PP-4A	1/4	1/8	1.04	.90	.748
270PP-6B	3/8	1/4	1.12	.98	.945

