

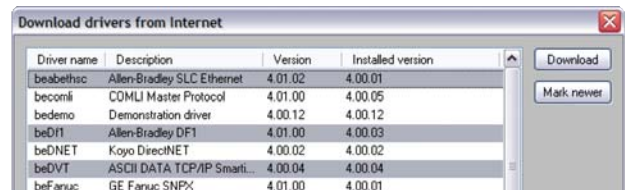
Quick and easy intuitive configuration

Information Designer's easy-to-learn usability makes it easy to create applications that are logical and user friendly, enabling flexible and efficient interfaces between systems, machines and operators. Ready-made templates and symbols, intuitive configuration tools and built-in help-functions make the design process easy. You can get your first application running in under 10 minutes, creating applications by simply pointing and placing on the screen. The visual environment provides a complete overview in the project manager, so you can see what's happening in the process and an off-line simulator enables instant application testing. Information Designer has multiple language usability for international applications.

Drivers enable full connectivity

The EXTER series includes a wide selection of drivers, affording unlimited connectivity with most brands and types of control systems and automation equipment on the market, with new drivers developed and updated continuously, downloaded free of charge directly into the configuration tool from the website, ensuring that all available drivers are of the latest version.

For an updated list of drivers, please visit our website.



Driver name	Description	Version	Installed version
bebethsc	Allen-Bradley SLC Ethernet	4.01.02	4.00.01
becomli	COMLI Master Protocol	4.01.00	4.00.05
bedemo	Demonstration driver	4.00.12	4.00.12
beDf1	Allen-Bradley DF1	4.01.00	4.00.03
beDNET	Koyo DirectNET	4.00.02	4.00.02
beDVT	ASCII DATA TCP/IP Smart...	4.00.04	4.00.04
beFarcuc	GE Farcuc SNPX	4.01.00	4.00.01

Remote access and control

The Remote Access Viewer is a program for the remote access and control of EXTER operator panels from your PC. This Virtual Network Computing client program together with the built-in VNC server, the Remote Access Function, facilitates access to an Ethernet network connected EXTER panel from your PC, provided you are connected to the same Ethernet network. If both the operator panel and your PC are connected to the Internet, you can access the EXTER from your PC anywhere at all – helpful when performing remote customer support, remote control and troubleshooting.

Easy installation cables

An extensive range of custom made cables is available to enable connection to third party controller products.

Expansion modules

The Ethernet, Profibus, MPI and CAN expansion modules enable the EXTER panel to communicate with networks and are easily mounted on the back of the panel. All settings and configurations are made easy by the Information Designer software.

Extended Functions Keyboard

Expand the functionality of your EXTER panel by adding the X-Key 16 keyboard unit. Offering 16 function keys and LEDs, up to four extended keyboard units can be connected to one panel for a total of 64 extra function keys and LEDs. The X-Key 16 is simple to implement in your application, with configuration made easy by the Information Designer software.



World-class support



In addition to supplying state-of-the-art HMI products, we offer support and service around the world through our own offices and our partners. On our website you can find start-up guides, manuals, e-Learning and technical support - everything you need to make EXTER and our other products even easier to use.

Beijer Electronics HMI Products is a pioneer in connecting people with the processes they control. Our HMI solutions build on 25 years of automation knowledge, yet they handle industrial applications with everyday ease. Used with simple intuition, they set machines, information and ideas in motion.

Beijer Electronics HMI Products has close relationships with OEMs, brand-label partners and distribution partners worldwide and is part of Beijer Electronics Group, which is active within HMI, industrial data communications and automation with subsidiaries in Scandinavia, the Baltics, Germany, France, UK, USA, Taiwan and China. For the representative nearest you, please visit our website.



FROM PERSON TO PROCESS.

HEAD OFFICE

SWEDEN
Beijer Electronics Products AB
Box 426
201 24 Malmö, Sweden
Telephone +46 40 35 86 00
Fax +46 40 93 23 01
info@beijerelectronics.com
www.beijerelectronics.com

SUBSIDIARIES

GERMANY
Elektronik-Systeme Lauer GmbH & Co. KG
Kelterstraße 59
72669 Unterensingen, Germany
Telephone +49 70 22/ 96 60 - 0
Fax +49 70 22 / 96 60 - 103
info@systeme-lauer.com
www.lauer-hmi.com

CHINA
Beijer Electronics Co. Ltd.
Room 201, Building B, No. 1618,
Yishan Road, Shanghai 201103, China
Telephone +86 21 6145 0400
Fax +86 21 6145 0499
info@beijerelectronics.cn
www.beijerelectronics.cn

USA
Beijer Electronics Inc.
939 N. Plum Grove Road, Suite F
Schaumburg IL 60173, USA
Telephone +1 847 619 6068
Fax +1 847 619 6674
info.usa@beijerelectronics.com
www.beijerelectronics.us

TAIWAN R.O.C.
Hitech Electronics Corp.
7 & 8 F, No 108 Min-Quan Road.
Shin-Tien, Taipei Shien, Taiwan, R.O.C.231
Telephone +886-2-2218-3600
Fax +886-2-2218-9547
hmi@hitech-lcd.com.tw
www.hitechsite.com

Beijer
ELECTRONICS

EXTER™ - INTELLIGENT DESIGN.



Robust and elegant HMI design

Combining form and function, the EXTER panel's award winning design brings high-performance together with robust construction to deliver future-proof solutions that enable virtually any HMI task imaginable. Sharpening competitive edge by putting the needs of the user in focus, the intuitive and ergonomic EXTER series comes in a variety of touch screen models, keypad models and even a handheld model, a number of these even available in black, black sun-readable and stainless steel versions.

HIGH PERFORMANCE HMI FOR ALL TYPES OF INDUSTRIES.

EXTER's award winning design combines form and function, fusing high-performance with robust elegance to provide intuitive solutions for all HMI needs.

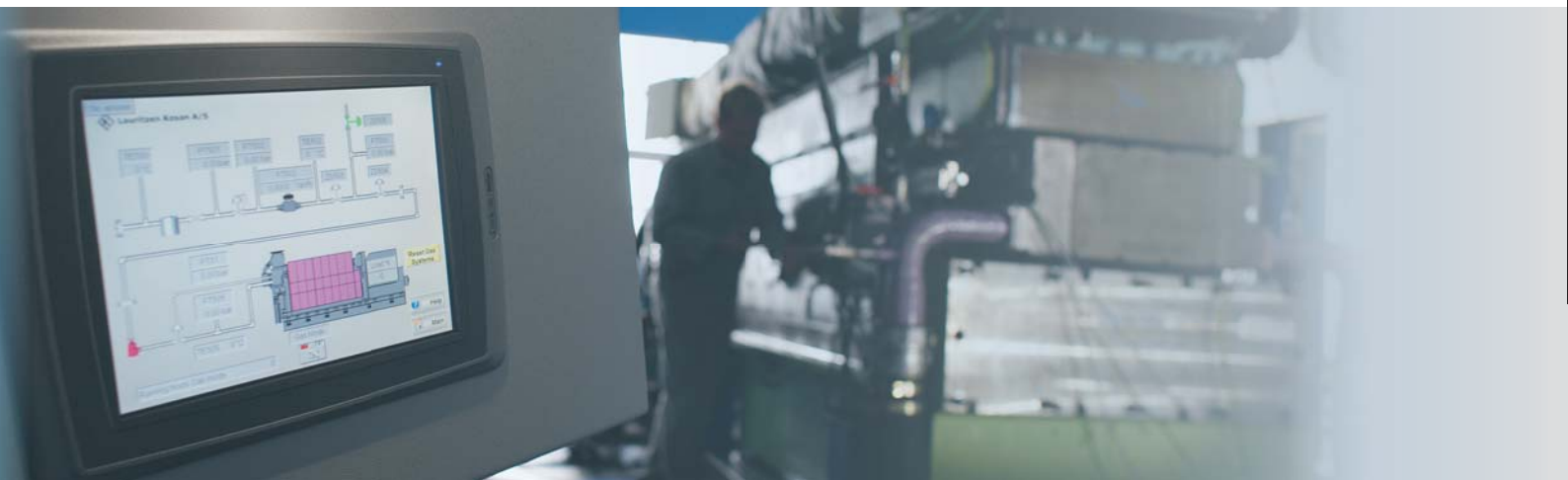
Ready for all applications

The EXTER panels comply with the toughest industry standards such as CE, UL and DNV. The robust and reliable panels have shallow mounting-depths to enable full control with space saving efficiency. The panels are 100% dimmable and easy to clean, with a high-pressure water-resistant IP66 front, making them perfect for installation everywhere from onboard ships and oil rigs to sterile rooms and chemically challenging environments. EXTER has proven its worth in many applications, including:

- Automotive industry
- Transportation
- Pharmaceuticals
- Food & Beverage
- Oil & Gas
- Packaging
- Water and electrical utilities
- Semiconductor production
- Telecom
- Asset management
- Building automation
- Marine & Offshore

HMI functions for your needs

The EXTER series offers advanced HMI functionality that enables you to operate the panels remotely, plan and monitor your operations with for example recipes, data logging, trending and the flexible alarm handling. Furthermore, multiple language support enables you to offer end-customers a choice of languages in the operator interface. See specifications for each EXTER model in the overview table, or visit our website to learn more about all of EXTER's functionality.





	EXTER K10	EXTER K20	EXTER K30	EXTER K60/K60m	EXTER K70	EXTER K100
HARDWARE SPECIFICATIONS						
Display size	160 x 32 pxl	240 x 64 pxl		5.7", 320 x 240 pxl	6.5", 640 x 480 pxl	10.4", 800 x 600 pxl
Display type	Monochrome FSTN			TFT, 64K color	TFT, 16 greyscales	TFT, 64K color
Available with sun-readable display	-					
Frame and casing material	Powder-coated aluminium (grey)					
Display backlight	LED with dimming				CCFL with dimming	
Function keys	6 in total with integrated LED and text strip		8 in total with integrated LED and text strip	16 in total (8 with integrated LED and text strip)		22 in total (10 with integrated LED and text strip)
LEDs	6 in total		16 in total (8 with integrated LED and text strip)			20 in total (10 with integrated LED and text strip)
COMMUNICATION PORTS						
Fieldbusses (expansion modules)	Profibus		Profibus, MPI * and CAN *			
Ethernet	Available as expansion module 10 Mbit/s shielded RJ45			10/100 Mbit/s shielded RJ45		
USB Host	-		Yes, type A (USB 1.1), max output current 500mA			
USB Device	-		-		Yes, type B (USB 1.1)	
RS485/RS422 25-pin D-sub	Chassis-mounted female with standard locking screws 4-40 UNC					
RS232 9-pin D-sub	Male with standard locking screws 4-40 UNC					
PROCESSOR	84 MHz RISC CPU (ARM7)		312 MHz RISC CPU (Intel Xscale)		416 MHz RISC CPU (Intel Xscale)	
FLASH MEMORY	4 MB (Spansion Flash)		32 MB (Intel StrataFlash)			
FLASH MEMORY FOR APPLICATION (incl. fonts)	512 kB		12 MB			
MEMORY, RAM	64 MB					
MEMORY EXPANSION SLOT	-				Compact flash, type I and II	
BUZZER	Yes					
REAL-TIME CLOCK	±20 PPM + error because of ambient temperature and supply voltage. Total maximum error: 1 min/month at 25 °C . Temperature coefficient: 0.004 ppm/°C2					
SUPPLY VOLTAGE	+24 V DC (20 - 30 V DC)					
OPERATING TEMPERATURE	0 ° to +50 °C					
STORAGE TEMPERATURE	-20 ° to +70 °C					
RELATIVE HUMIDITY	5 - 85 % non-condensed					
DIMENSIONS W x H x D (mm)	155 x 114 x 52.4	155 x 155 x 52.4	202 x 187 x 63.6	275 x 168 x 63.3	285 x 177 x 62	382 x 252 x 64
Cut-out dimensions W x H x D (mm)	121 x 80	120 x 138	166 x 149	240 x 130	246 x 139	343 x 208
Mounting depth (mm)	46.4	46.4	57.6	57.3	56.0	58.0
Weight (kg)	0.45	0.55	0.95	1.2	1.4	2.5
APPROVAL AND ENCLOSURE CLASSES						
EMC directive 2004/108/EC article5	Noise tested according to EN61000-6-3 emission and EN61000-6-2 immunity				Noise tested according to EN61000-6-4 emission and EN61000-6-2 immunity	
UL, cUL	UL 1604 Class I, Div 2 / UL 508 / UL 50 4x indoor use only					
NEMA	4x indoor use only					
Front/Back cover protection class	IP66/IP20					
Certifications	DNV, Germanischer Lloyd, IACS, RINA					
FUNCTIONALITY SPECIFICATION						
	Alarm management (one group) / Dual drivers with data exchange / Dynamic objects / Internal variables / Macros / Message libraries / Multiple languages (with up to 10 languages in one project) / No protocole mode / Passthrough mode (dependent on the driver) / Password security (up to 8 levels) / Recipe management / Reports / Time channels / Transparent mode (dependent on the driver)			Access to controller system via Internet / Alarm management (with up to 16 groups) / Data logger / Data recipe / Dual drivers with data exchange / Dynamic objects / E-mails (SMTP Auth. Client) / Internal variables / I/O Poll interval groups / Macros / Message libraries / Multiple languages (with up to 10 languages in one project) / No protocole mode / Passthrough mode (dependent on the driver) / Password security (up to 8 levels) / Recipe management / Remote operation via internet / Reports / Set time and date / Time channels / Transfer of files (FTP server) / Transparent mode (dependent of the driver) / Trends (real-time and historic) / Upload application / Web server / Operator panel network (BDTP network)		
	-	Real-time trends				

* Available Q4 2008

** Valid for EXTER black and sun-readable black panels



EXTER T40/T40m		EXTER T60/T60m		EXTER T70	EXTER T100	EXTER T150	EXTER T150 STAINLESS STEEL	EXTER M70	
3.5", 320 x 240 pxl		5.7", 320 x 240 pxl		6.5", 640 x 480 pxl	10.4", 800 x 600 pxl	15.0", 1024 x 768 pxl	15.0", 1024 x 768 pxl	6.5", 640 x 480 pxl	
TFT, 64 K color	TFT, 16 greyscale	TFT, 64 K color	TFT, 16 greyscale	TFT, 64 K color	TFT, 64 K color	TFT, 64 K color	TFT, 64 K color	TFT, 64 K color	
-		-		Available with sun-readable display (sr-bl)*			-	-	
Powder-coated aluminium (grey)				Powder-coated aluminium (grey or black(-bl))			Stainless steel(-st)	ABS housing	
LED with dimming				CCFL with dimming					
-									
-									
Profibus, MPI* and CAN*								-	
10/100 Mbit/s shielded RJ45								10 Mbit/s shielded	
Yes, type A (USB 1.1), max output current 500mA									
Yes, type B (USB 1.1)									
Chassis-mounted female with standard locking screws 4-40 UNC								-	
Male with standard locking screws 4-40 UNC								-	
312 MHz RISC CPU (Intel Xscale)				416 MHz RISC CPU (Intel Xscale)				416 MHz (Intel PXA 270)	
32 MB (Intel StrataFlash)				32 MB				32 MB	
12 MB									
64 MB									
Compact flash, type I and II								-	
Yes									
±20 PPM + error because of ambient temperature and supply voltage. Total maximum error: 1 min/month at 25 °C . Temperature coefficient: 0.004 ppm/°C2								Without battery backup	
+24 V DC (20 - 30 V DC)									
0 ° to +50 °C									
-20 ° to +70 °C									
5 - 85 % non-condensed								5 - 95 % non-condensed	
155.8 x 119 x 62.8	202 x 152 x 63.3	219 x 154 x 61	302 x 228 x 64	398 x 304 x 66	398 x 304 x 66	Ø:250, Height: 114			
139 x 105	180 x 130	189 x 138	265 x 206	356 x 279	356 x 279	-			
56.8	57.3	55	58	60	60	-			
0.6	0.9	1.2	2.1	3.7	4.8	1.25			
Noise tested according to EN61000-6-3 emission and EN61000-6-2 immunity				Noise tested according to EN61000-6-4 emission and EN61000-6-2 immunity				EN418, EN954-1, EN60204-1	
UL 1604 Class I, Div 2 / UL 508 / UL 50 4x indoor use only						-		UL508, UL1740	
4x indoor use only						-		-	
IP66/IP20						-		IP65	
DNV, Germanischer Lloyd, IACS**, RINA**						-		-	
Access to controller system via Internet / Alarm management (with up to 16 groups) / Data logger / Data recipe / Dual drivers with data exchange / Dynamic objects / E-mails (SMTP Auth. Client) / Internal variables / I/O Poll interval groups / Macros / Message libraries / Multiple languages (with up to 10 languages in one project) / No protocole mode / Passthrough mode (dependent on the driver) / Password security (up to 8 levels) / Recipe management / Remote operation via internet / Reports / Set time and date / Time channels / Transfer of files (FTP server) / Transparent mode (dependent of the driver) / Trends (real-time and historic) / Upload application / Web server / Operator panel network (BDTP network)								Supports everything in the column to the left, except: No protocole mode / Passthrough mode / Transparent mode	