

Control enclosures CC-600/CC-600 NR



Product benefits

- Various standard sizes available from stock
- Door as standard
- Foamed gaskets
- Equipment mounted inside enclosure body can be infinitely adjusted in height and depth on mounting rails
- IP 65/IP 66 (CC-600 NR)
Ingress protection
- Enclosure can be mounted to suspension system by one person
- Clamping bar for mounting control equipment can be moved to any position in all-round mounting groove
- Clamping bar groove outside protected space
- Additional profiled sealing strip to close off space between studded front plates and enclosure (only CC-600 NR)

Materials + Coating CC-600

- Enclosures: 1.5 mm sheet steel
- Back plates: 1.5 mm sheet steel
- Front plates: 3 mm aluminium
- Gaskets: PU foam
- Enclosure and door – RAL 7035, light grey
- Back plate – RAL 7035, light grey
- Front plate – natural (silver), anodised

Materials + Surfaces CC-600 NR

- Enclosures: 1.5 mm sheet steel stainless steel B.S.I. 304 S15
- Front plates: 2 mm sheet steel stainless steel B.S.I. 304 S15
- Gaskets: PU foam
- Enclosures and doors: 240 grain brushed finish
- Front plates: 240 grain brushed finish

Front plate attachment (CC-600)

The attachment of front plates with visible screw holes is performed using the enclosed freely positioned locking mechanisms. These locking mechanisms are fitted in a enclosure groove which is not externally visible. The attachment screws are screwed into the locking mechanisms.

Front plates with welded studs are clamped into place using clamping brackets in the interior of the enclosure. These front plates have studs welded on the rear, and provide a smooth front surface without visible screw heads.

Application samples





Keyboard shelf
(Part number 980.6.1750.00 painted sheet steel)
(Part number 980.6.1760.00 VA 1.4301)
sheet steel keyboard support for subsequent mounting, RAL 7035, light grey, 10° inclination; mechanical machining is required for mounting. Attachment material is included.



Keyboard rail
(Part number 980.6.1770.00)
metal frame with attachment elements for accommodation of PC keyboards. Adjustable inclination. Mechanical machining is required for mounting. Attachment material is included.



M4 cage nuts (8 off)
(Part number 980.8.0041.00)
M5 cage nuts (8 off)
(Part number 980.8.0042.00)
for attaching equipment to the attachment rails. The cage nuts are simply slid into the required position.



Profiled sealing strip
(Part number 980.8.0099.00)
Profiled strip made of silicone for sealing gap between front plate and enclosure. Simple to cut to the required length and fit before mounting front plate.



Application sample CC-600 NRF
Directly mounted Industrial-PC with hygiene front

Dimensions CC-600

Empty enclosure	Enclosure-ext. dimensions	Enclosure-int. dimensions	Attachment area on front plate with welded studs	External dimensions of front plate with welded studs	Front plate with welded studs	Attachment area on front plate with screw holes
Part number	W x H x D (mm)	W x H x D (mm)	W x H (mm)	W x H (mm)	Part number	W x H (mm)
180.0.0001.00	370x500x150	290x420x145	250x380	318x448	980.8.0002.00	290x420
180.0.0002.00	430x380x150	350x300x145	310x260	378x328	980.8.0004.00	350x300
180.0.0003.00	430x630x150	350x550x145	310x510	378x578	980.8.0006.00	350x550
180.0.0004.00	480x430x150	400x350x145	360x310	428x378	980.8.0008.00	400x350
180.0.0005.00	480x580x220	400x500x215	360x460	428x528	980.8.0010.00	400x500
180.0.0006.00	580x380x220	500x300x215	460x260	528x328	980.8.0012.00	500x300
180.0.0007.00	580x430x300	500x350x295	460x310	528x378	980.8.0014.00	500x350
180.0.0008.00	580x500x300	500x420x295	460x380	528x448	980.8.0016.00	500x420

Dimensions CC-600 NR

Empty enclosure	Enclosure-ext. dimensions	Enclosure-int. dimensions	Attachment area on front plate with welded studs	External dimensions of front plate with welded studs	Front plate with welded studs	Attachment area of mounting plate
Part number	W x H x D (mm)	W x H x D (mm)	W x H (mm)	W x H (mm)	Part number	W x H (mm)
180.1.0001.00	380 x 380 x 150	300 x 300 x 145	260 x 260	328 x 328	980.8.0053.00	220 x 220
180.1.0002.00	430 x 380 x 150	350 x 300 x 145	310 x 260	378 x 328	980.8.0055.00	270 x 220
180.1.0003.00	430 x 480 x 180	350 x 400 x 175	310 x 360	378 x 428	980.8.0057.00	270 x 320
180.1.0004.00	480 x 430 x 180	400 x 350 x 175	360 x 310	428 x 378	980.8.0057.00	320 x 270
180.1.0005.00	480 x 480 x 220	400 x 400 x 215	360 x 360	428 x 428	980.8.0059.00	320 x 320
180.1.0020.00	530 x 480 x 220	450 x 400 x 215	410 x 360	478 x 428	980.8.0061.00	370 x 220
180.1.0021.00	580 x 530 x 300	500 x 450 x 295	460 x 410	528 x 478	980.8.0063.00	420 x 370
180.1.0022.00	630 x 580 x 300	550 x 500 x 295	510 x 460	578 x 528	980.8.0065.00	470 x 420

Components supplied CC-600

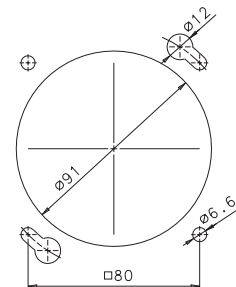
- Main body with mounted door, coated (RAL 7035, light grey)
- 8 mm square lock as standard
- Attachment material for front plate with screws (locking mechanism)

Components supplied CC-600 NR

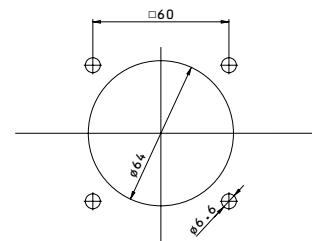
- Enclosure body with door mounted
- 5 mm two-way key safety lock as standard
- Front plate

Suspension system machining

The CC-600 and CC-600 NR control enclosures have suspension system machining as standard. The hole pattern of the suspension system machining for CC-600 enclosures with a depth of 300 mm is compatible with the BERNSTEIN CS-2000 system 80. The suspension system machining for CC-600 enclosures with a depth of 150 mm and 220 mm matches the CS-2000 systems 50 and 60 as well as the CS-2000 SL system. The hole pattern for CC-600 NR enclosures is compatible with the stainless suspension system CS-600 NR.



Machining pattern for CS-2000 couplings from system 80



Machining pattern for CS-2000 couplings from system 50 and 60, and CS-2000 SL

External dimensions on front plate with screw holes W x H (mm)	Front plate screw holes	Mounting plate set	Attachment area of mounting plate	Mounting rails TS 35	Attachment rails for main body	Handles side
	Part number	Part number	W x H (mm)	Part number	Part number	Part number
320x450	980.8.0001.00	980.8.0112.00	210x340	980.8.0031.00	980.8.0038.00	980.8.0025.00
380x330	980.8.0003.00	980.8.0105.00	270x220	980.8.0033.00	980.8.0038.00	980.8.0026.00
380x580	980.8.0005.00	980.8.0113.00	270x470	980.8.0033.00	980.8.0038.00	980.8.0027.00
430x380	980.8.0007.00	980.8.0107.00	320x270	980.8.0035.00	980.8.0038.00	980.8.0028.00
430x530	980.8.0009.00	980.8.0114.00	320x420	980.8.0035.00	980.8.0039.00	980.8.0029.00
530x330	980.8.0011.00	980.8.0115.00	420x220	980.8.0037.00	980.8.0039.00	980.8.0026.00
530x380	980.8.0013.00	980.8.0116.00	420x270	980.8.0037.00	980.8.0040.00	980.8.0028.00
530x450	980.8.0015.00	980.8.0117.00	420x340	980.8.0037.00	980.8.0040.00	980.8.0025.00

Mounting plate kit with fixing material and hinges Part number	Mounting rails TS 35 Part number	Attachment rails for main body Part number	Stainless steel handle kit Part number
980.8.0104.00	980.8.0079.00	980.8.0088.00	980.8.0095.00
980.8.0105.00	980.8.0081.00	980.8.0088.00	980.8.0095.00
980.8.0106.00	980.8.0081.00	980.8.0089.00	980.8.0096.00
980.8.0107.00	980.8.0083.00	980.8.0089.00	980.8.0095.00
980.8.0108.00	980.8.0083.00	980.8.0090.00	980.8.0096.00
980.8.0109.00	980.8.0083.00	980.8.0090.00	980.8.0096.00
980.8.0110.00	980.8.0085.00	980.8.0091.00	980.8.0096.00
980.8.0111.00	980.8.0087.00	980.8.0091.00	980.8.0096.00



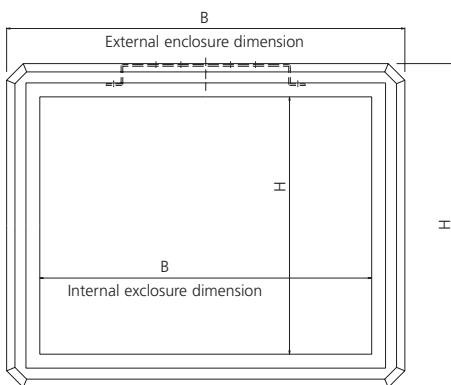
Handles CC-600



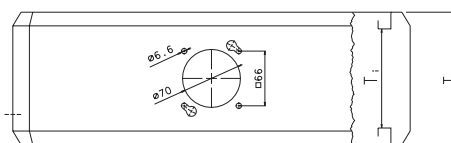
Handles in stainless steel CC-600 NR



Mounting plate CC-600 and CC-600 NR



CC-600/CC-600 NR



CS-600 NR