

## Suspension system CS-480 NR



### Product description

The CS-480 NR system has been developed specifically for suspending control enclosures in hygiene environments in the food and pharmaceutical industry.

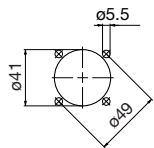
The CS-480 NR is extremely flexible thanks to the wide range of variants in which it is available. You have the choice between a combination of customised pre-formed tubing and suspension system components or, if time is scarce, you can combine the pre-formed tubings and coupling sleeves ex-stock with components from the suspension system.

### System features

- Assembly apertures on bearing components
- Tubing simply clamped in position
- Loading capacity 400 N/m
- IP 65 protection rating
- Material X10 CrNiS18 9
- Factory-set torque
- Wide selection of components for a particularly large number of combination options

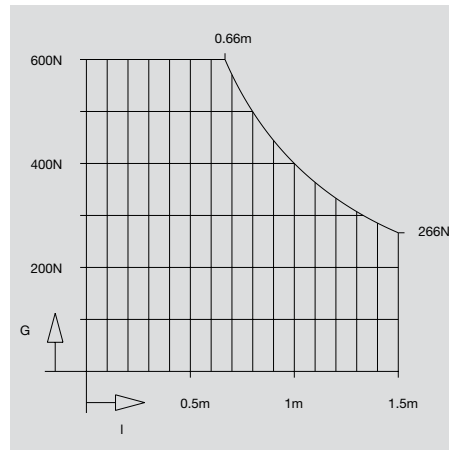
### Machining of enclosures for mounting couplings

The coupling hole dimensions for enclosure machining are shown in the diagram below.



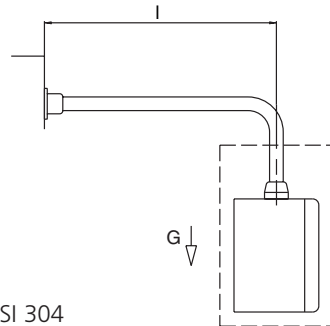
### Materials and surfaces

Stainless steel tubings	B.S.I. 304 S15/ AISI 304
Stainless steel components	X10 CrNiS18 9
Bearings	POM
O rings	NBR



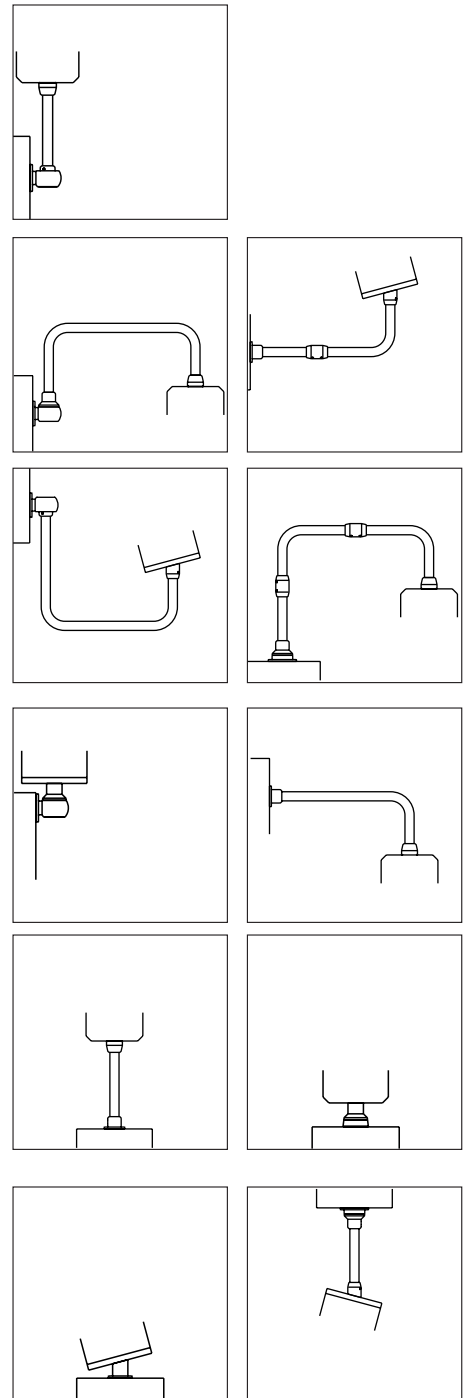
### Load diagram

The loading capacity of the CS-480 NR suspension system product line is shown in the diagram. Separate approval must be requested for higher loads. In the following description, system length  $l$  refers to the length shown in the diagram.



### System combinations

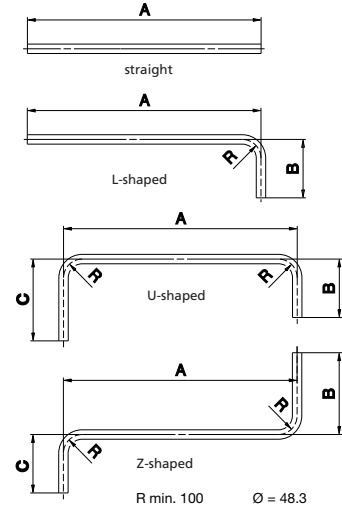
The wide range of components permits a high level of flexibility in configuring the suspension system. A selection of possible combinations is shown here.





### Customised tubings

On request, pre-formed tubing is available in different variants for BERNSTEIN's CS-480 NR suspension system. The three different variants are L-shaped, U-shaped and Z-shaped. Straight tubing can also be supplied in customer-specific lengths. To order customised tubing, simply indicate the shape you require when ordering (e.g. straight, L-, U- or Z-shaped) together with dimensions. The letters used to denote the various dimensions are shown in the drawings below.



Note: Dimensions B and C at least 220 mm; dimension A in U- and Z-shaped version at least 320 mm

### Tubings

The 48.3 mm outer diameter tubings are made from 3.6 mm gauge stainless steel and are available in the following standard sizes.

Tubing, straight

250 mm	Art.-Nr. 952.3.5010.00
500 mm	Art.-Nr. 952.3.5020.00
750 mm	Art.-Nr. 952.3.5030.00
1000 mm	Art.-Nr. 952.3.5040.00
1250 mm	Art.-Nr. 952.3.5050.00
1500 mm	Art.-Nr. 952.3.5060.00

### Flexibility enhanced by L-shaped tubes and coupling sleeves

Using L-shaped tubes and coupling sleeves in conjunction with straight tubes, it is possible to dispense with the time-consuming process of making customised tubings. Straight tubing, L-shaped tubing and coupling sleeves are available from stock and are perfect for configuring a flexible suspension system in next to no time. Tubing, L-shaped

250x250 mm	Part number 952.3.5000.01
500x500 mm	Part number 952.3.5000.11
Coupling sleeve	Part number. 101.3.0512.00

## System components Type CS-480 NR

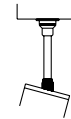
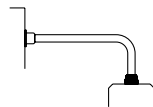


Article  
Part number  
Weight

Coupling (for enclosure mounting)  
**101.3.0501.00**  
1.4 kg

Angle coupling (for enclosure mounting)  
**101.3.0503.00**  
1.0 kg

Example application

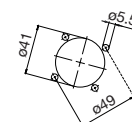
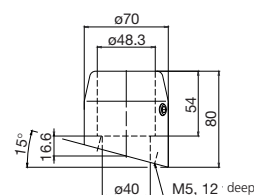
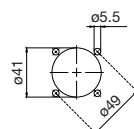
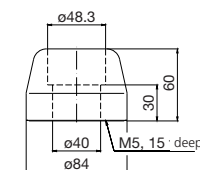


Version

Flange coupling for attaching enclosures.  
Turns through 340° with rotation limiter.  
Pre-set torque. Maintenance-free bearings.  
Complete with gaskets and fixing material.

Rigid flange coupling with 15° angle of inclination for attaching enclosures.  
Complete with gaskets and fixing material.

Dimensional drawings  
(dimensions in mm)



# System components

## Type CS-480 NR



Article	Rotational base, for external attachment	Rotational base, for internal attachment
Part number	<b>101.3.0505.00</b>	<b>101.3.0506.00</b>
Weight	4.2 kg	3.8 kg

Example application		
---------------------	--	--

Version	Rotational base for attachment to machine or floor. Turns through 340° with rotation limiter. Pre-set torque. Maintenance-free bearings. Complete with gaskets.	Rotational base for attachment to machine or floor. Turns through 340° with rotation limiter. Pre-set torque. Maintenance-free bearings. Complete with gaskets.
---------	---	---

Dimensional drawings (dimensions in mm)		
---	--	--



Article	Rotational base bracket coupling, internal	Wall joint S
Part number	<b>101.3.0508.00</b>	<b>101.3.0509.00</b>
Weight	4.1 kg	7.3 kg

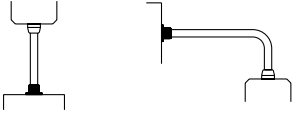
Example application		
---------------------	--	--

Version	Rotational base bracket coupling (internal attachment) for directly attaching enclosures to machine or floor. Turns through 340° with rotation limiter. Pre-set torque. Maintenance-free bearings. Complete with gaskets and fixing material.	Wall joint with vertical socket for attachment to vertical surfaces. Cover to facilitate wiring. Turns through 340° with rotation limiter. Pre-set torque. Maintenance-free bearings. Complete with gaskets.
---------	---	--

Dimensional drawings (dimensions in mm)		
---	--	--



Base bracket/wall flange  
**101.3.0502.00**  
1.4 kg



Base bracket or wall flange for attachment to horizontal and vertical surfaces. Complete with gaskets.



Base bracket angle coupling  
**101.3.0504.00**  
1.9 kg



Rigid, 15° angle coupling for direct attachment of enclosures to horizontal and vertical surfaces. Complete with gaskets and fixing material.

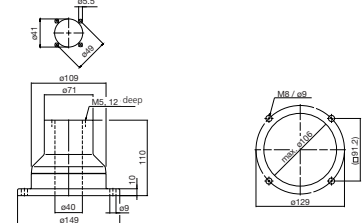
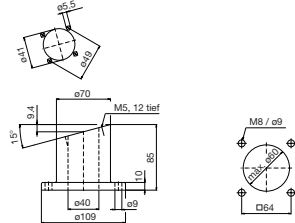
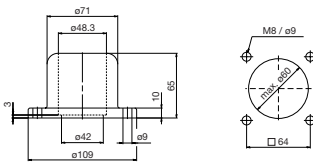


Rotational base bracket coupling, external  
**101.3.0507.00**  
4.5 kg



Rotational base bracket coupling (external attachment) for directly attaching enclosures to machine or floor. Turns through 340° with rotation limiter. Pre-set torque. Maintenance-free bearings. Complete with gaskets and fixing material.

Dimensional drawings (dimensions in mm)



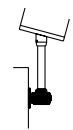
Wall coupling S  
**101.3.0510.00**  
7.3 kg



Rotational wall coupling for direct attachment to vertical machine surfaces. Turns through 340° with rotation limiter. Cover to facilitate wiring. Maintenance-free bearings. Complete with gaskets and fixing material.



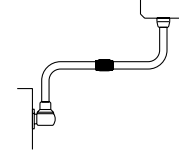
Wall bracket S  
**101.3.0511.00**  
7.7 kg



Wall bracket with vertical socket for attachment to vertical surfaces. Cover to facilitate wiring. Complete with gaskets.



Coupling sleeve  
**101.3.0512.00**  
1.5 kg



Coupling sleeve to facilitate assembly and disassembly of tubing configurations. Complete with gaskets.

