

NAMUR
DIN EN 60947-5-6



Rated operating distance	
Mounting	flush /non-flush
Switching functions	
Model description	
Part number	
Wiring diagram	(page/Pos.)
Stock status: Ex stock/Built to order	
Mechanical data	
Housing material	
Cable length 2 m/6.5 ft. mm	
Accessories	(page/Pos.)

M 5; 25 mm length

1 mm (0.04")

●/-
NAMUR / B
KIB-M05EA/
001-2
658.1699.009
263/8
●/-

CuZn39Pb3
PVC 2 x 0.14
-

M 8 x 1; 32 mm length

1.5 mm (0.06")

●/-
NAMUR / A
KIB-M08EA/
1.5-2
658.1601.001
263/8
●/-

stainless steel 1.4305
PVC 2 x 0.25
-



Rated operating distance	
Mounting	flush /non-flush
Switching functions	
Model description	
Part number	
Wiring diagram	(page/Pos.)
Stock status: Ex stock/Built to order	
Mechanical data	
Housing material	
Cable length 2 m/6.5 ft. mm	
Accessories	(page/Pos.)

M 8 x 1; 32 mm length

2 mm (0.08")

-/●
NAMUR / A
KIN-M08EA/
002-2
658.1601.002
263/8
-/●

stainless steel 1.4305
PVC 2 x 0.25
-

M 12 x 1; 30 mm length

2 mm (0.08")

●/-
NAMUR / A
KIB-M12EA/
002-2
658.1624.004
263/8
●/-

CuZn39Pb3
PVC 2 x 0.25
-

Electrical and mechanical data for NAMUR inductive sensors

Electrical data
Nominal input voltage 8.2 V DC
Input resistance 1 kΩ

Output current

	Diagram A	Diagram B
damped	≤ 1 mA	≤ 1.1 mA
undamped	≥ 4 mA	≥ 2.2 mA

Mechanical data
Temperature range min./max. -25 °C/+70 °C
-13 °F/+158 °F
Protection class IP 67/NEMA 4



M 12 x 1; 32 mm length

4 mm (0.16")

-/●

NAMUR / A

KIN-M12EA/

004-2

658.1625.006

263/8

●/-

CuZn39Pb3

PVC 2 x 0.25

-



M 18 x 1; 35 mm length

5 mm (0.20")

●/-

NAMUR / A

KIB-M18EA/

005-2

658.1626.007

263/8

●/-

CuZn39Pb3

PVC 2 x 0.5

-



M 18 x 1; 35 mm length

8 mm (0.32")

-/●

NAMUR / A

KIN-M18EA/

008-2

658.1627.008

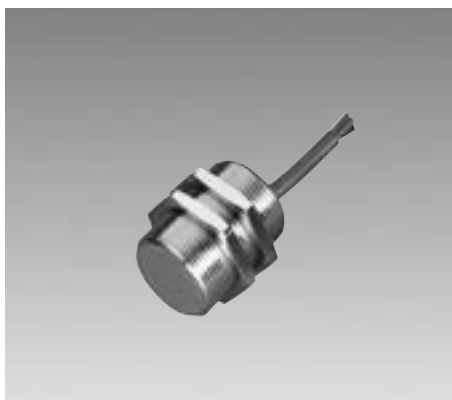
263/8

-/●

CuZn39Pb3

PVC 2 x 0.5

-



M 30 x 1,5; 31 mm length

10 mm (0.39")

●/-

NAMUR / A

KIB-M30EA/

010-2

658.1699.010

263/8

●/-

CuZn39Pb3

PVC 2 x 0.5

-

