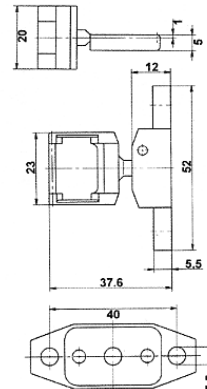
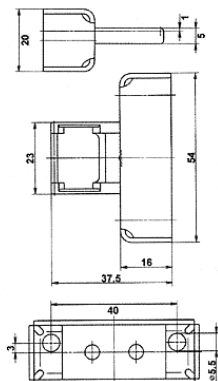
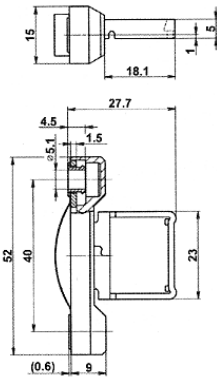


All dimensions in mm.



Part #	M4-Key	F-Key	MRU-Key	SK-Handle
--------	--------	-------	---------	-----------

Min Closing Radius	6"	6"	2"	
--------------------	----	----	----	--



- Stainless steel + polyamide

M - magnet \$29

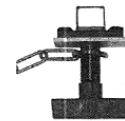
- Key with door holding magnet 11 → 23lbs.



- Spring loaded to accommodate overtravel and vibration
- Stainless steel + polyamide



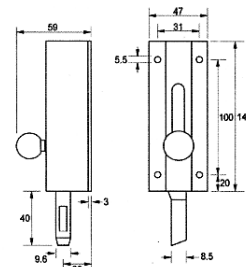
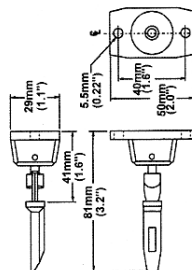
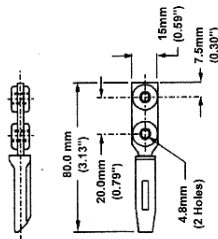
- Flexible
- Adjustable horizontally & vertically
- Stainless steel
- Spring loaded to accommodate overtravel, vibration



- MANUAL KEY HANDLE
- For loose doors, gates, fences
- Includes chain

Maximum actuator speed 1 yard per second.

All dimensions in mm (in).



Part #	K-FLAT	RR-FLEX	VTW-LATCH
--------	--------	---------	-----------

Min Closing Radius	16"	6"	
--------------------	-----	----	--



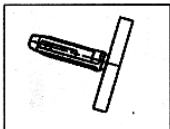
- Stainless steel + Polyamide



- Flexible
- Adjustable key angle
- Stainless steel
- Four 90° position choices of key on the keys mounting base



- Side bolt
- Convenient manual operation



K-T-MOUNT

16"

