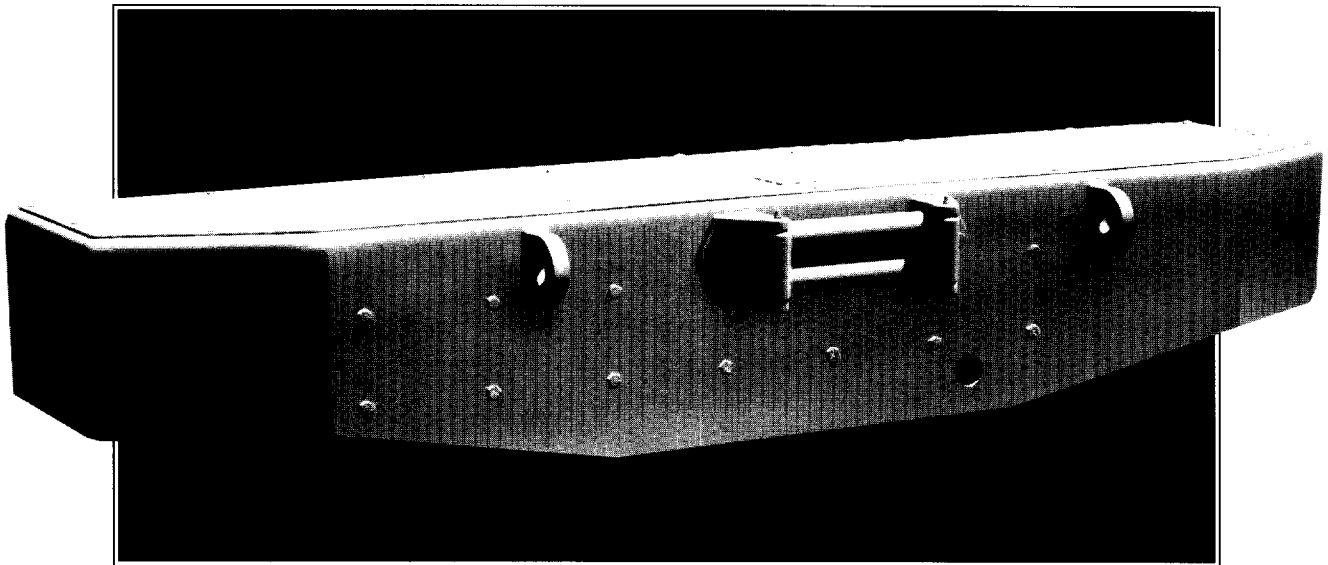


# BRADEN

## MODEL HUP30B

### HYDRAULIC PLANETARY BUMPER MOUNT RECOVERY WINCH



### 30,000 LB FIRST LAYER LINE PULL

- Universal Bumper Mount
- Bumper Assembly Includes Winch, Hydraulic Motor and 4-Way Roller Fairlead
- Light Weight While Maintaining Structural Integrity
- Fully Tested to Insure Proper Winch Support at Rated Load
- Heavy Duty Drawbar Eyes Standard
- High Efficiency Planetary Gearing
- Splined Jaw Clutch for Free Spooling of Drum
- Drag Brake Reduces Drum Back-Spinning
- Available With or Without Extension Shaft

**PACCAR WINCH DIVISIONS**

P.O. BOX 547 • BROKEN ARROW, OK 74013  
PHONE: (918) 251-8511 • FAX: (918) 259-1575  
[www.paccar.com/winch](http://www.paccar.com/winch)

# PERFORMANCE DATA

## MODEL HUP30B

Single Speed Motor				Two Speed Motor			
Rope Size (in.)	LAYER	8.8 cu in. Displacement 2,500 psi @ 25 gpm		Low Speed		High Speed	
				7.2 cu in. Displacement 2,900 psi @ 16 gpm		3.6 cu in. Displacement 2,900 psi @ 16 gpm	
		Line Pull (lbs)	Line Speed (fpm)	Line Pull (lbs)	Line Speed (fpm)	Line Pull (lbs)	Line Speed (fpm)
3/4	1	30,000	21	30,000	15	13,170	38
	2	24,580	26	24,540	18	10,780	47
	3	20,800	31	20,770	21	9,120	56
	4	18,000	36	18,000	25	7,900	64
	5	15,900	41	15,880	28	6,970	73

### METRIC PERFORMANCE

Single Speed Motor				Two Speed Motor			
Rope Size (mm)	LAYER	144 cc Displacement 176 kg/cm <sup>2</sup> @ 95 LPM		Low Speed		High Speed	
				118 cc Displacement 204 kg/cm <sup>2</sup> @ 61 LPM		59 cc Displacement 204 kg/cm <sup>2</sup> @ 61 LPM	
		Line Pull (kg)	Line Speed (mpm)	Line Pull (kg)	Line Speed (mpm)	Line Pull (kg)	Line Speed (mpm)
19	1	13,610	6.4	13,610	4.6	5,970	11.6
	2	11,130	7.9	11,130	5.5	4,890	14.3
	3	9,420	9.5	9,420	6.4	4,140	17.1
	4	8,160	11.0	8,160	7.6	3,580	19.5
	5	7,200	12.5	7,200	8.5	3,160	22.3

#### Drum Dimensions

	(in.)	(mm)
Barrel Diameter	6.0	152
Flange Diameter	14.0	356
Between Flanges	12.3	312

#### Accumulative Rope Capacity

3/4 in. (19 mm)

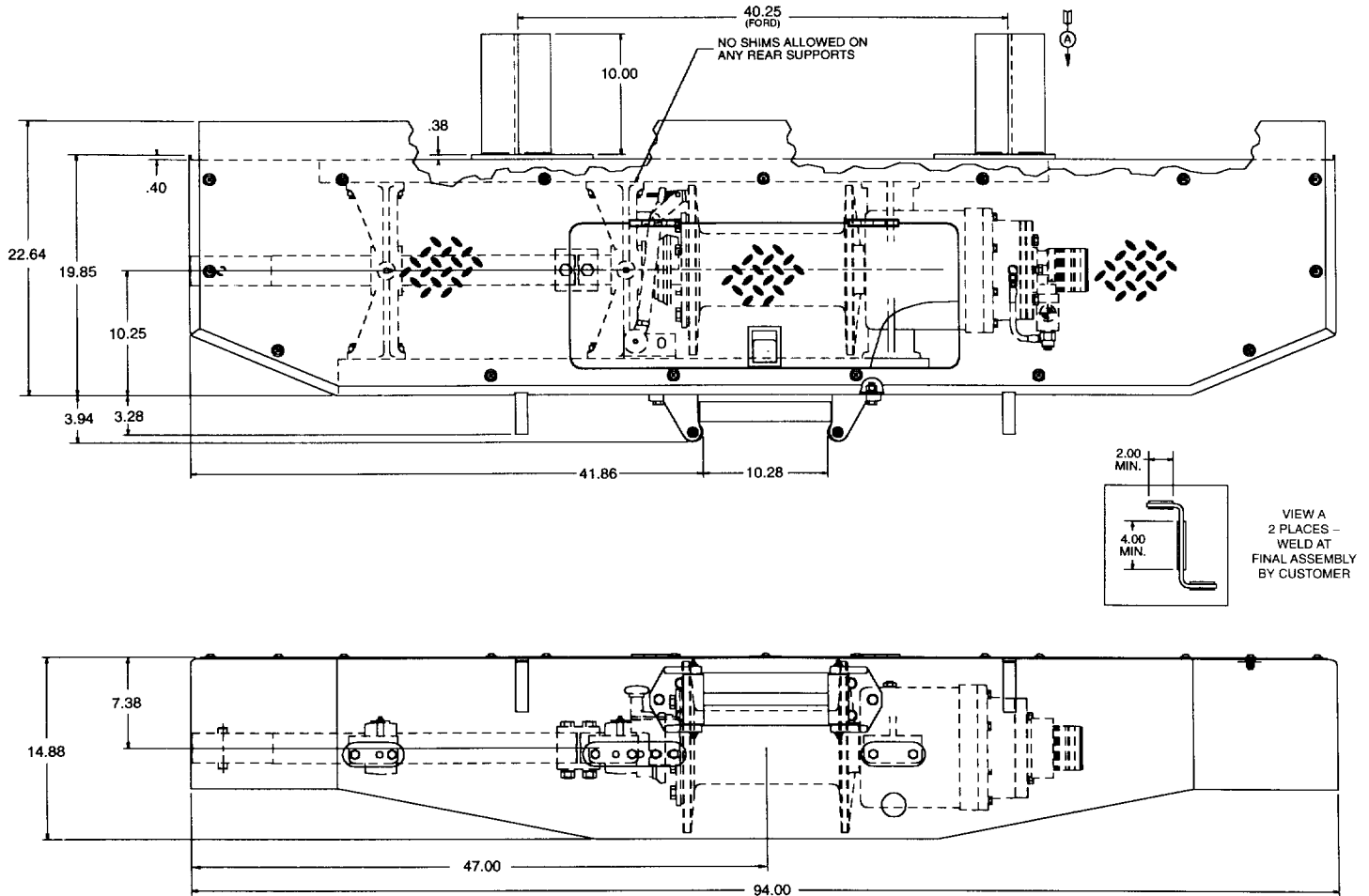
Layer	(ft)	(m)
1	29	9
2	64	20
3	105	32
4	153	47
5	207	63

Overall Winch Reduction Ratio 41:1

Optional extension shaft rotates at the same speed as the drum.

# DIMENSIONAL INFORMATION

## MODEL HUP30B



### BUMPER RATINGS

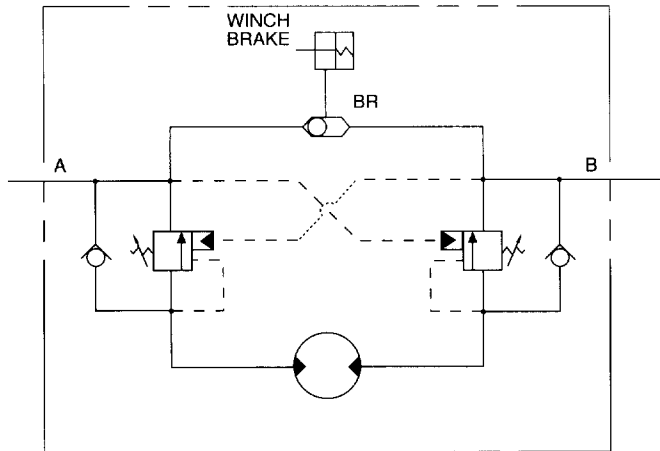
Line pulls for winch, bumper and roller assembly - straight to 45 degrees either side.....	30,000 LBS.
Capstan shaft rating with 7 in. dia. capstan.....	3,200 LBS.
Approximate Weight (Winch, bumper and roller assembly).....	850 LBS.
Add for extension shaft and bearing leg .....	90 LBS.

### MOUNTING STEPS

(Refer to Braden Universal Bumper Mounting Instructions publication PB-192 for details)

1. Remove original bumper and position Braden Bumper relative to front of truck.
2. Position bumper mounting angles and trim to fit truck frame as required. Attach mounting angles to truck frame.
3. Weld bumper mounting angles to bumper assembly.

## HYDRAULIC CIRCUIT



Winch Control Circuit - Single Speed  
Brake Effective Both Directions (Double Counterbalance with Shuttle)

### **WARNING**

Downward pulls by winch or capstan require additional support by a stiff leg (customer supplied) to prevent damage to truck suspension and/or bumper. Bumper ratings shown are for the bumper and mounting angles only and are not necessarily representative of the vehicle frame strength for which Braden assumes no liability. See bumper mounting instructions for details.

### **WARNING**

VISUALLY CHECK THAT THE CLUTCH IS FULLY ENGAGED BEFORE OPERATING THE WINCH DRUM UNDER LOAD!

Winches described herein are neither designed nor intended for use or application to equipment used in the lifting or moving of persons.

A minimum of 5 wraps of cable must be left on the drum to prevent the load from being supported by the cable anchor alone. Since the cable anchor is not designed to hold the rated load, failure to do so could cause the load to drop, which could result in property damage, personal injury or death.

SPECIFICATIONS ARE SUBJECT TO CHANGE WITHOUT NOTICE AND WITHOUT INCURRING OBLIGATION.