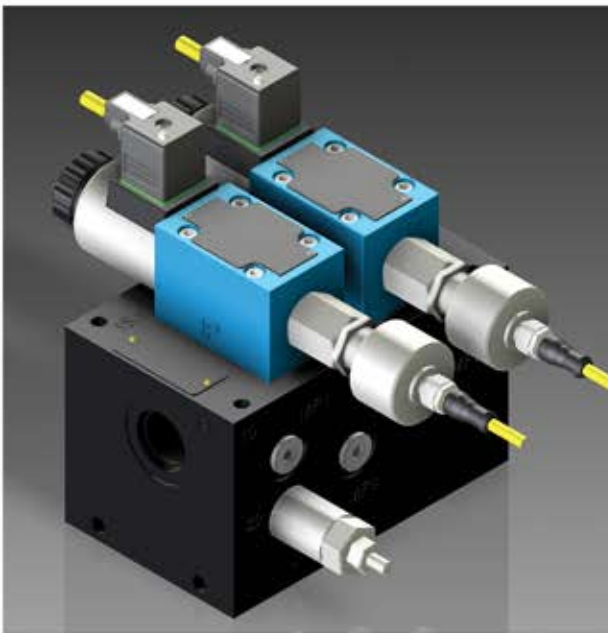




Monitored Block & Vent Assembly



This assembly is intended to block the supply of hydraulic fluid to downstream machinery and vent any trapped pressure back to tank, leaving machinery in a zero-energy state, allowing for safe shutdown.

Unique Safety Design

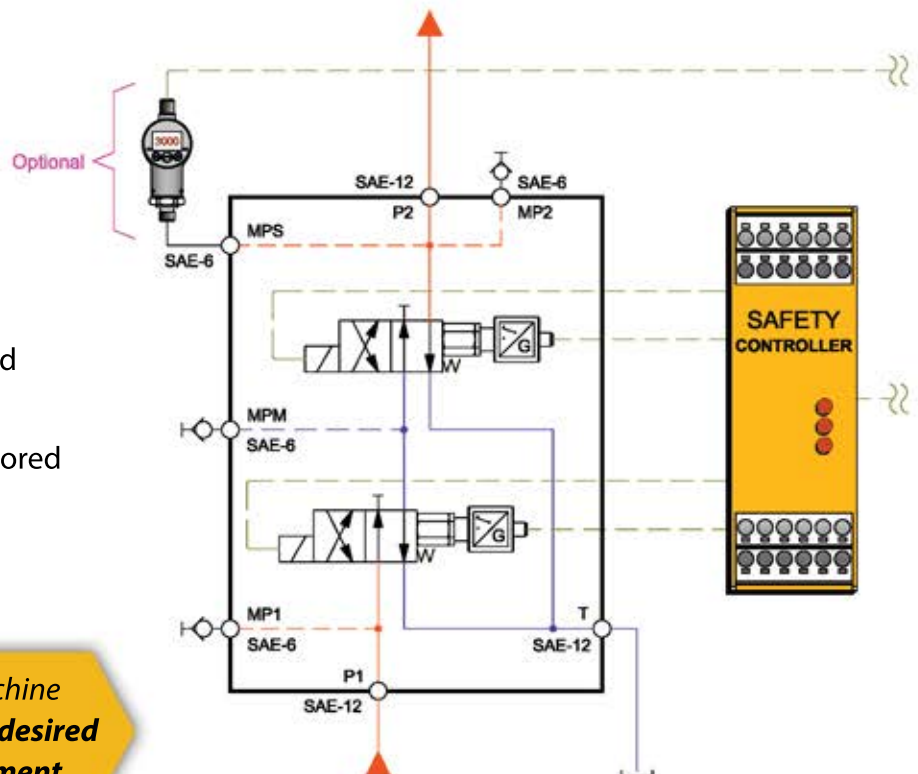
Our hydraulic products are part of the important elements needed to achieve compliance with machine safety standards, such as:

- **ANSI B11.2:** Hydraulic and Pneumatic Power Presses - Safety Requirements for Construction, Care and Use
- **ISO 13849:** Safety of Machinery and Safety-Related Parts of Control Systems
- **IEC 62061:** Safety of Machinery: Functional Safety of Electrical, Electronic and Programmable Electronic Control Systems

Typical Circuit Diagram

- ▶ Dual, direct operated valves with monitored spool position feedback.
- ▶ Integrated into single manifold assembly (with diagnostic ports).
- ▶ Optional pressure switch for visual and supplemental electrical verification.
- ▶ All inputs and outputs must be monitored by a safety controller.

See other side for typical manifold & valve construction.

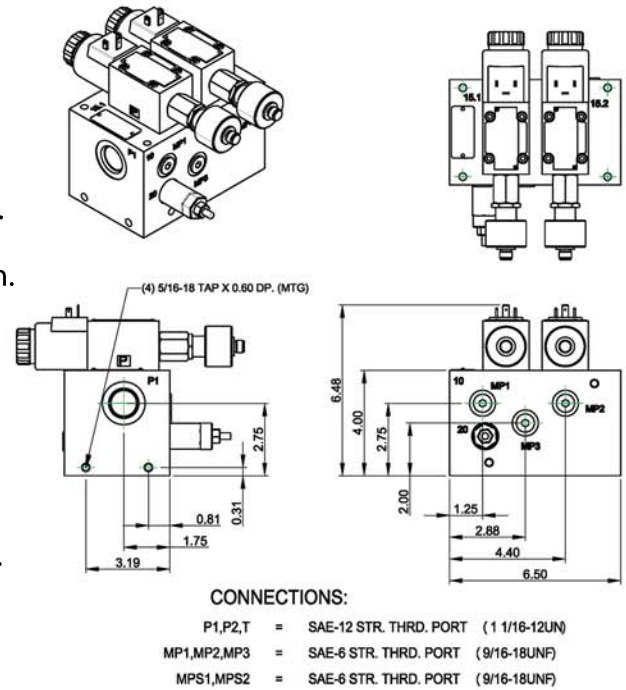


Hydraulic safety is just one part of overall machine safety. Ask how we can help you attain the desired performance & safety level for your equipment.

Monitored Block & Vent Assembly

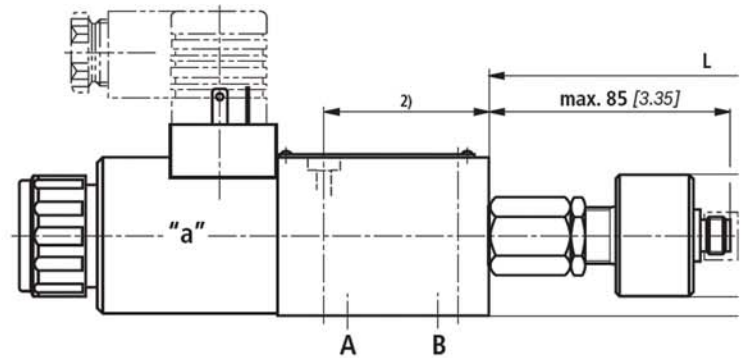
Typical Manifold Design:

- ▶ All valves are integrated into single manifold assembly (with diagnostic ports).
- ▶ Integrated design allows for reliable, leak-free operation.
- ▶ Ports clearly identified for ease and quality of installation.
- ▶ Standard designs up to 40-GPM (custom designs higher).
- ▶ Operating ranges to 3000-PSI and 5000-PSI.
- ▶ Safety circuitry can, and sometimes must, be incorporated into existing circuits and manifold designs. We can help with the decision process.



Typical Valve Construction:

- ▶ High-performance industrial valves from Rexroth available in monitored and non-monitored configurations.
- ▶ Function and performance are fully scalable.
- ▶ MTTFd pre-determined for each product line.
- ▶ Rexroth directional valves achieve a B10d value of 40 million switching cycles.



For nearly two decades, Airline has been a recognized leader in the safeguarding of process and manufacturing environments.

Our mission is to reduce our customers' manufacturing-related accidents by providing assistance with machinery and process hazard identification, classification and reduction.

Contact our MPSA Group for a turnkey safeguarding solution.

AIRLINE - AN AUTHORIZED DISTRIBUTOR:

Rexroth
Bosch Group

EATON

OMRON
AUTOMATION & SAFETY

PHENIX CONTACT

ABB



SCHMERSAL



**Machine & Process Safety
Assessment Group**

A division of Airline

Call toll free: 1-844-267-7272

www.mpsasafety.com