

Sytronix DRn System Assemblies

Frequency-controlled pump drive systems

rexroth
A Bosch Company

Sytronix DRn is an easy, powerful, and cost-effective solution for constant pressure pump control, providing **noise reduction**, **energy savings** and **increased system efficiencies**.

Advanced displacement management optimizes the performance during partial load and idle operation.

DRn 5020 Components:

Axial piston pumps with hydraulic-mechanic pressure controller



A10VSO-DR(G)

A4VSO-DR(G)

Standard asynchronous motor up to 315 kW



MOT-FC

Frequency converter



Rexroth's pump control EFC 5610 enhanced with Sytronix DRn 5020 application functionality. The EFC 5610 pump control used in the DRn 5020 system is available from 4 kW (5 hp) to 160kW (200 hp).

Pressure transducer



A HM20-2x pressure transducer is attached to the pressure line of the pump-motor unit for recording the actual pressure value.

Additional accessories:

- Cable for commissioning
- EMC filter
- Coupling, bell housing
- Pump foot (optional)



As an authorized Bosch Rexroth distributor, Airline makes it easy to integrate the DRn control system into your application, either as a new system or an add-on package to an existing power pack unit. The DRn is field-fittable and can convert your existing machine into a low-noise, energy-efficient system.

Airline makes it easy to order, too, offering DRn control system assembly units ranging from 10HP to 60HP.

Lower noise emissions and your total cost of ownership!

See other side for part numbers & more info

REDUCED NOISE LEVELS

Optimized variable displacement part-load operation reduces torque demand and decreases noise emission by up to 20 dB. Makes it easier to meet noise control regulations and reduces soundproofing expenses.

INCREASED EFFICIENCY

The pump control optimizes the operating speed, maximizing efficiency, and reducing energy consumption. Also reduces motor heating.

IDEAL FOR RETROFITS

Easy to add-on to existing DR or DRG systems using an EFC 5610 pump controller and pressure transducer.

MULTI-ETHERNET COMMUNICATION OPTIONS

Sytronix DRn 5020 supports standalone operation or multi-Ethernet communication options, providing flexibility for integration into a variety of system topologies.

Frequency Converters EFC 5610: Powerful and energy efficient



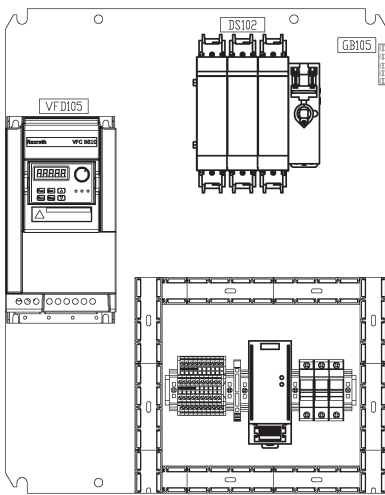
- **Power Range**
 - 1x AC 230 V, 0.4 to 2.2 kW
 - 3x AC 400 V, 0.4 to 160 kW
- **Vector Control (SVC)** for optimized torque and high RPM-precision, even in field weakening range
- **Safe torque off STO** (Cat. 4 SIL3 PLe)
- **No brake resistor needed;** saves space in cabinet
- **Easy-to-use** with free downloadable software tools IndraWorks Ds or ConverterWorks
- **Extension modules for I/O and communication.** The EFC 5610 can be quickly extended by a multi-Ethernet interface (with Sercos, PROFINET, EtherCAT, EtherNet/IP, Modbus/TCP) or fieldbus interface (PROFIBUS, CANopen) and can be integrated in all common automation solutions.

DRn Control System Assembly Units from Airline

Specifically designed for constant pressure systems, the DRn 5020 provides higher performance for presses, metallurgy, wood working, central hydraulic systems, and auxiliary pumps for oil cooling or filtering.

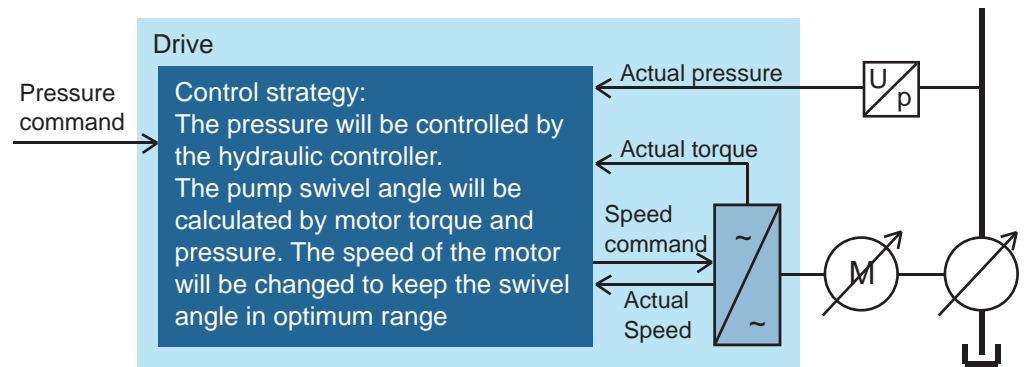
- All designs configured for 460VAC
- Bosch Rexroth EFC 5610 drives used exclusively
- Eaton fusible disconnects included in NEMA 12 enclosure
- Bosch-Rexroth pressure transducers included and are pre-wired to drive

Panel Interior:



PART NUMBERS

- 10HP Drive: p/n 1805017-1
- 20HP Drive: p/n 1805017-2
- 30HP Drive: p/n 1805017-3
- 40HP Drive: p/n 1805017-4
- 50HP Drive: p/n 1805017-5
- 60HP Drive: p/n 1805017-6



Ask your Airline rep for assistance with ordering or customizing a drive unit for your application!



www.airlinehyd.com

(800) 999-7378